


51°W 50°W 49°W 48°W 47°W 46°W 45°W 44°W 43°W 42°W 41°W



 DMI


 Ice Service

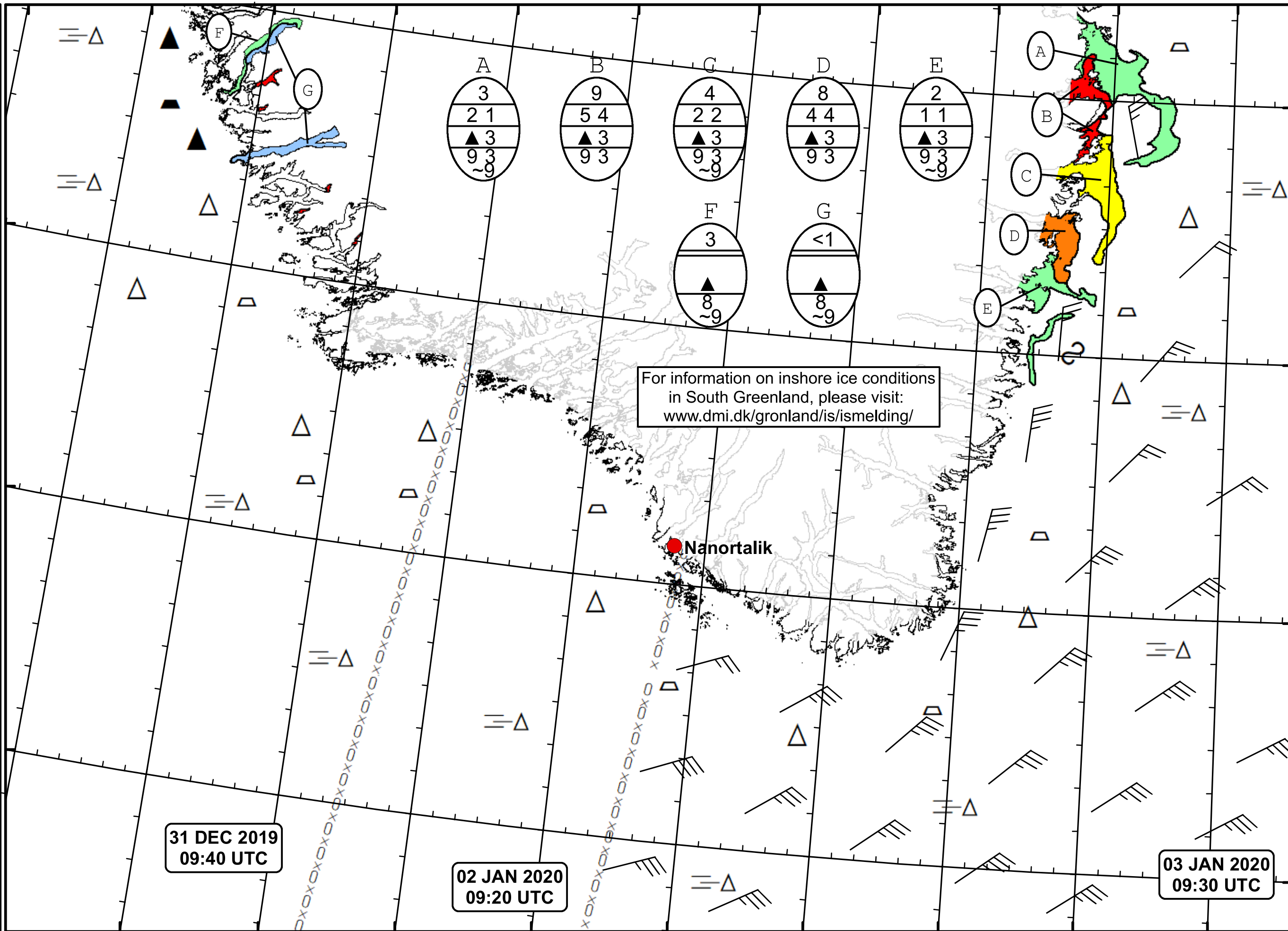
 Danish Meteorological Institute

 Cape Farewell Ice Chart

 Valid: 03 January 2020, 09:30 UTC

 Next Chart: 06 January 2020





62°N

61°N

60°N

59°N

31 DEC 2019
09:40 UTC

02 JAN 2020
09:20 UTC

03 JAN 2020
09:30 UTC

For information on inshore ice conditions
in South Greenland, please visit:
www.dmi.dk/gronland/is/ismelding/

Nanortalik

49°W 48°W 47°W 46°W 45°W 44°W 43°W 42°W 41°W