

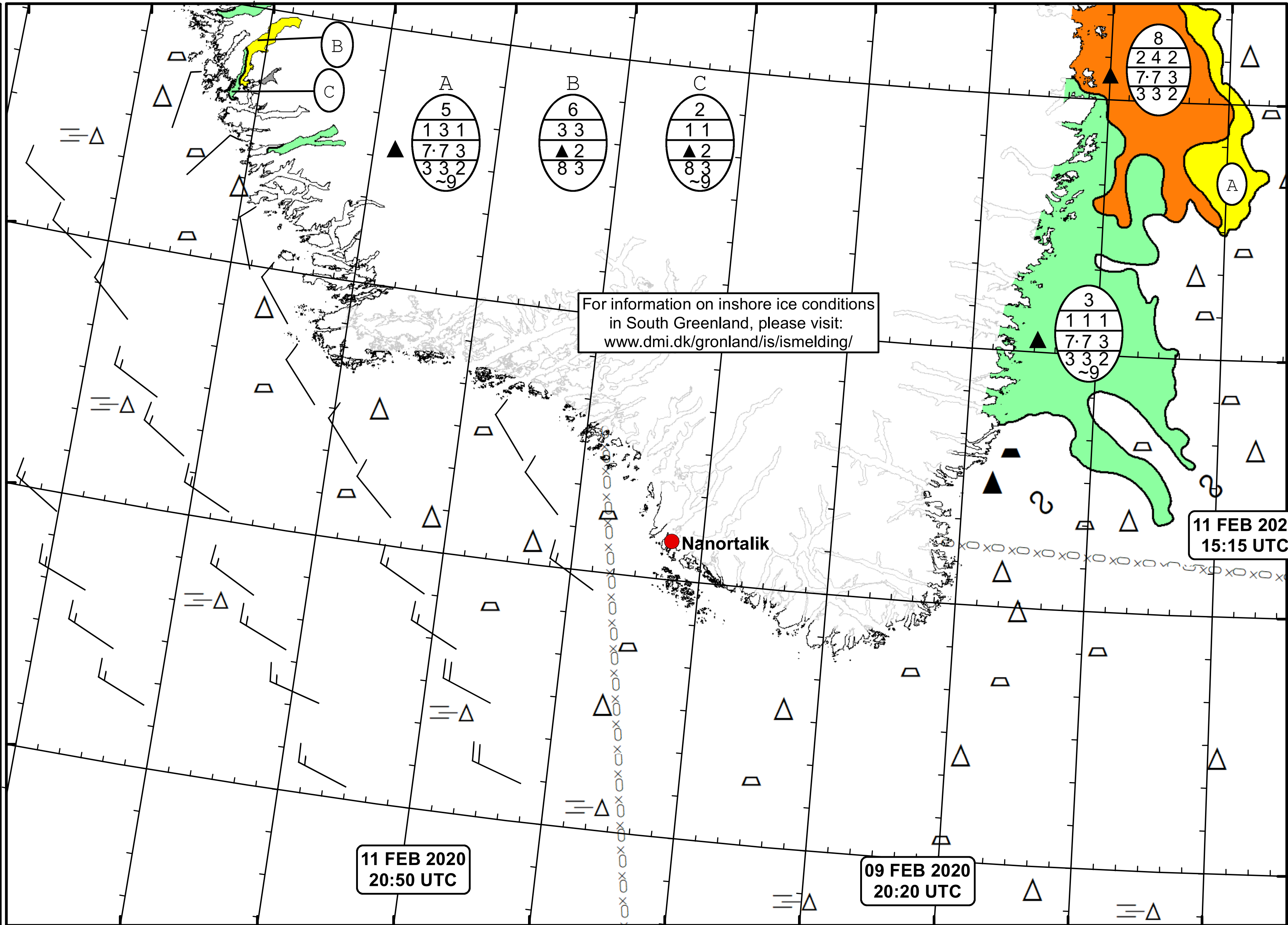
51°W 50°W 49°W 48°W 47°W 46°W 45°W 44°W 43°W 42°W 41°W

62°N

61°N

60°N

59°N

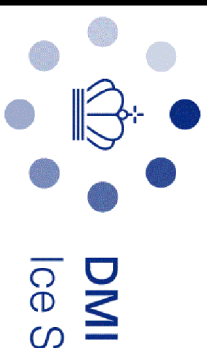


For information on inshore ice conditions in South Greenland, please visit: www.dmi.dk/gronland/is/ismelding/

11 FEB 2020
15:15 UTC

11 FEB 2020
20:50 UTC

09 FEB 2020
20:20 UTC



DMI
Ice Service
Cape Farewell Ice Chart
Danish Meteorological Institute
Valid: 11 February 2020, 20:50 UTC
Next Chart: 14 February 2020

