

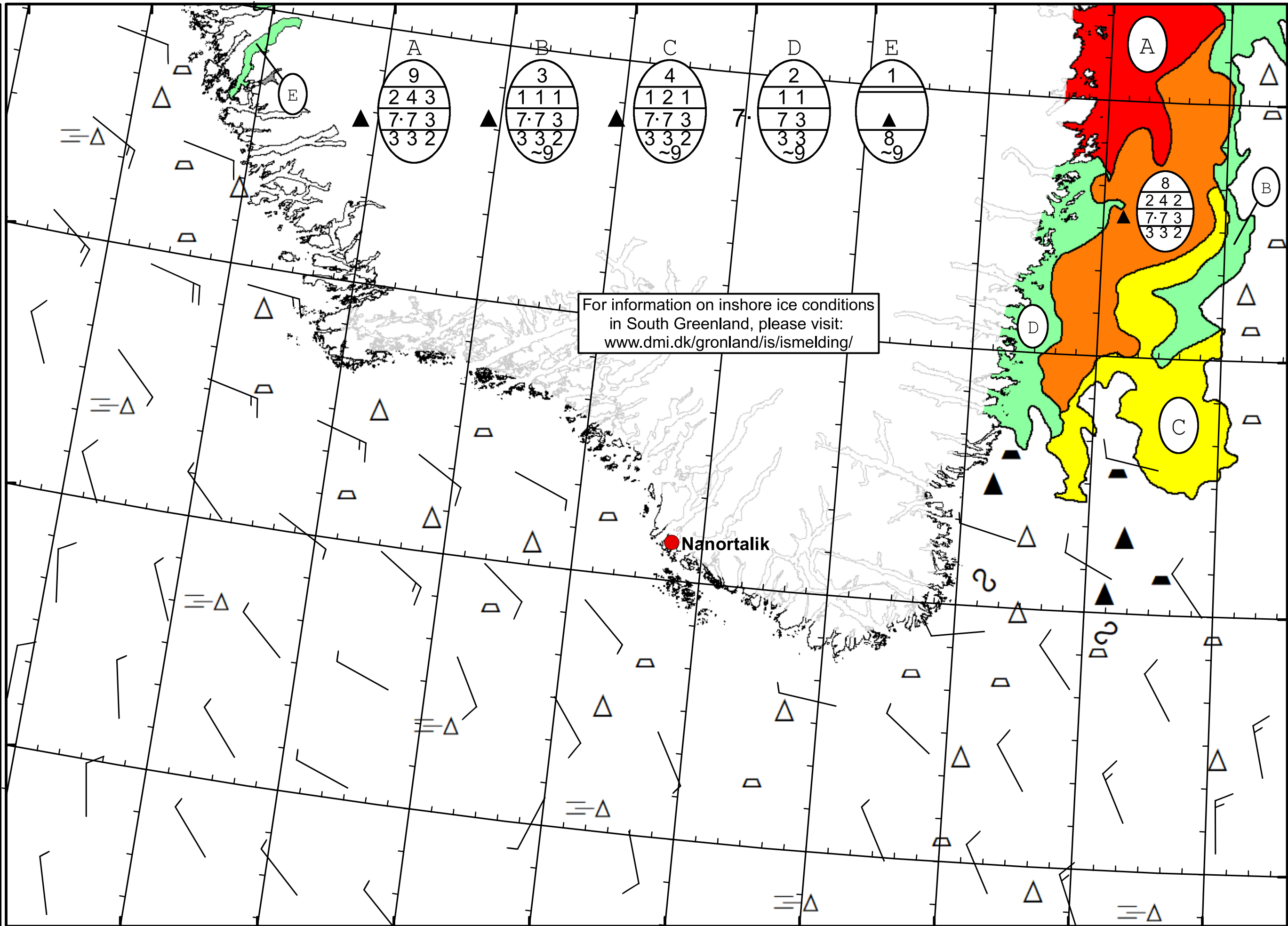
51°W 50°W 49°W 48°W 47°W 46°W 45°W 44°W 43°W 42°W 41°W

62°N

61°N

60°N

59°N



For information on inshore ice conditions  
in South Greenland, please visit:  
[www.dmi.dk/gronland/is/ismelting/](http://www.dmi.dk/gronland/is/ismelting/)



DMI  
Ice Service  
Cape Farewell Ice Chart  
Danish Meteorological Institute  
Valid: 13 February 2020, 20:35 UTC  
Next Chart: 17 February 2020



49°W 48°W 47°W 46°W 45°W 44°W 43°W 42°W 41°W