


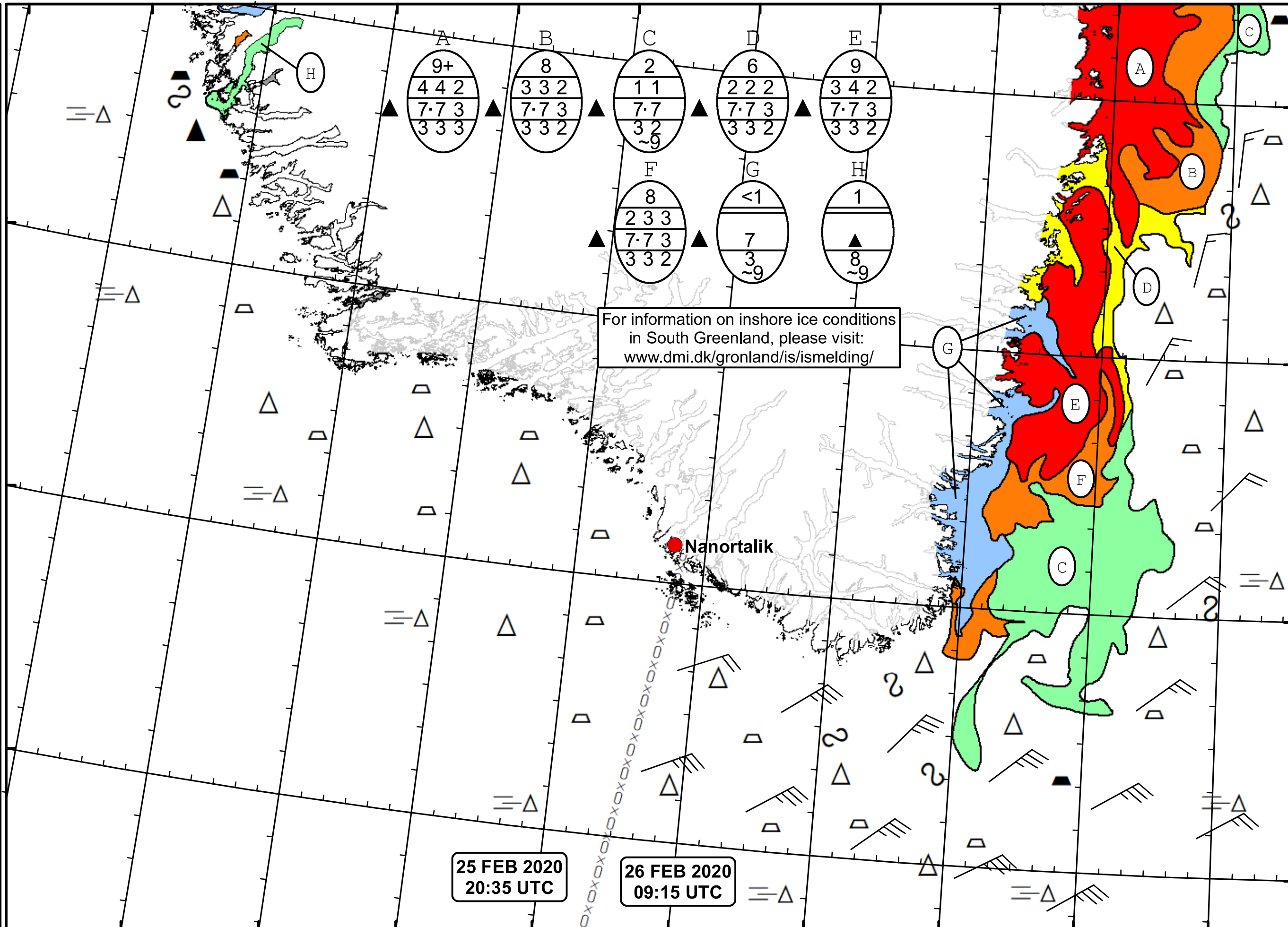


51°W 50°W 49°W 48°W 47°W 46°W 45°W 44°W 43°W 42°W 41°W

62°N  
61°N  
60°N  
59°N



**DMI**  
 Ice Service  
**Cape Farewell Ice Chart**  
 Danish Meteorological Institute  
 Valid: 26 February 2020, 09:15 UTC  
 Next Chart: 28 February 2020  




A 9+ 4 4 2 7·7 3 3 3 3	B 8 3 3 2 7·7 3 3 3 2	C 2 1 1 7·7 3 2 ~9	D 6 2 2 2 7·7 3 3 3 2	E 9 3 4 2 7·7 3 3 3 2
F 8 2 3 3 7·7 3 3 3 2	G <1 7 3 ~9	H 1 ▲ 8 ~9		

For information on inshore ice conditions  
in South Greenland, please visit:  
[www.dmi.dk/gronland/is/ismelding/](http://www.dmi.dk/gronland/is/ismelding/)

**Nanortalik**

25 FEB 2020  
20:35 UTC

26 FEB 2020  
09:15 UTC

49°W 48°W 47°W 46°W 45°W 44°W 43°W 42°W 41°W