

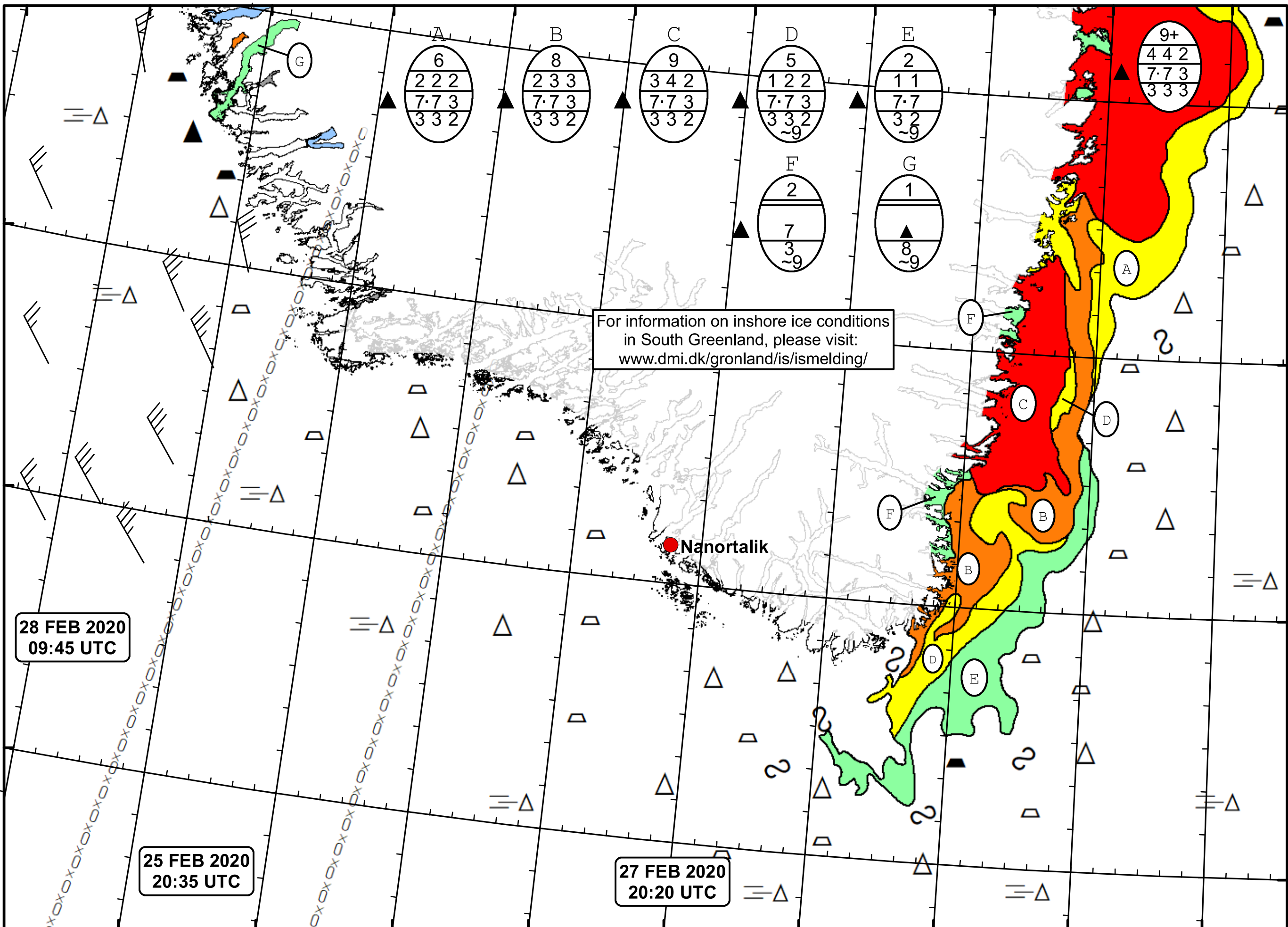
51°W 50°W 49°W 48°W 47°W 46°W 45°W 44°W 43°W 42°W 41°W

62°N

61°N

60°N

59°N



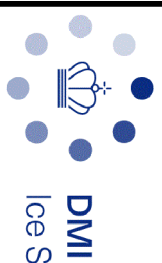
For information on inshore ice conditions
in South Greenland, please visit:
www.dmi.dk/gronland/is/ismelding/

Nanortalik

**28 FEB 2020
09:45 UTC**

**25 FEB 2020
20:35 UTC**

**27 FEB 2020
20:20 UTC**



DMI
Ice Service
Cape Farewell Ice Chart
Danish Meteorological Institute
Valid: 28 February 2020, 09:45 UTC
Next Chart: 29 February 2020



49°W 48°W 47°W 46°W 45°W 44°W 43°W 42°W 41°W