



52°W 51°W 50°W 49°W 48°W 47°W 46°W 45°W 44°W 43°W 42°W 41°W 40°W 39°W 38°W



 DMI




 Ice Service

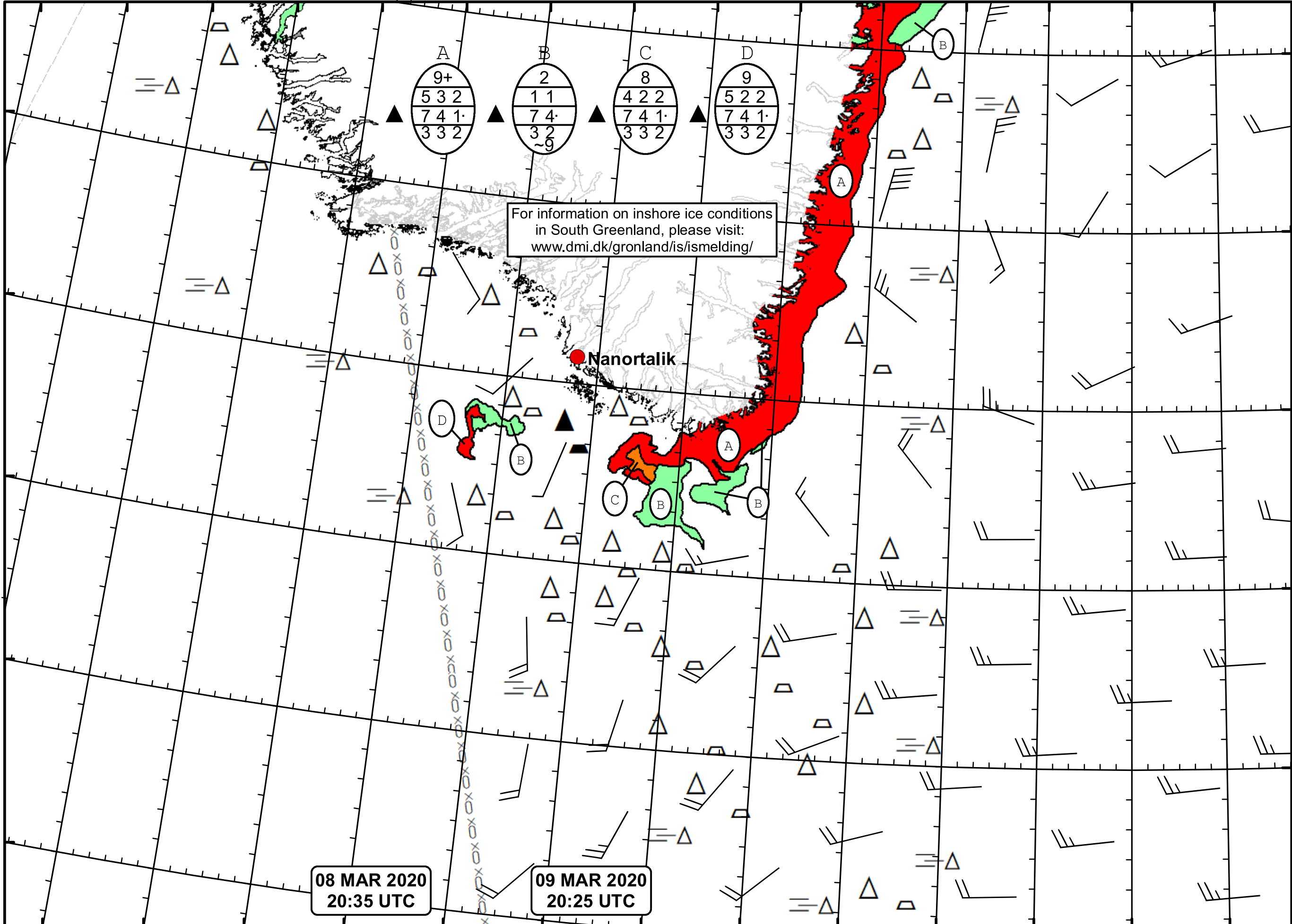
 Cape Farewell Ice Chart

 Danish Meteorological Institute

 Valid: 09 March 2020, 20:25 UTC

 Next Chart: 11 March 2020





For information on inshore ice conditions in South Greenland, please visit: www.dmi.dk/gronland/is/ismelding/

Nanortalik

08 MAR 2020
20:35 UTC

09 MAR 2020
20:25 UTC

50°W 49°W 48°W 47°W 46°W 45°W 44°W 43°W 42°W 41°W 40°W 39°W 38°W

62°N
61°N
60°N
59°N
58°N