


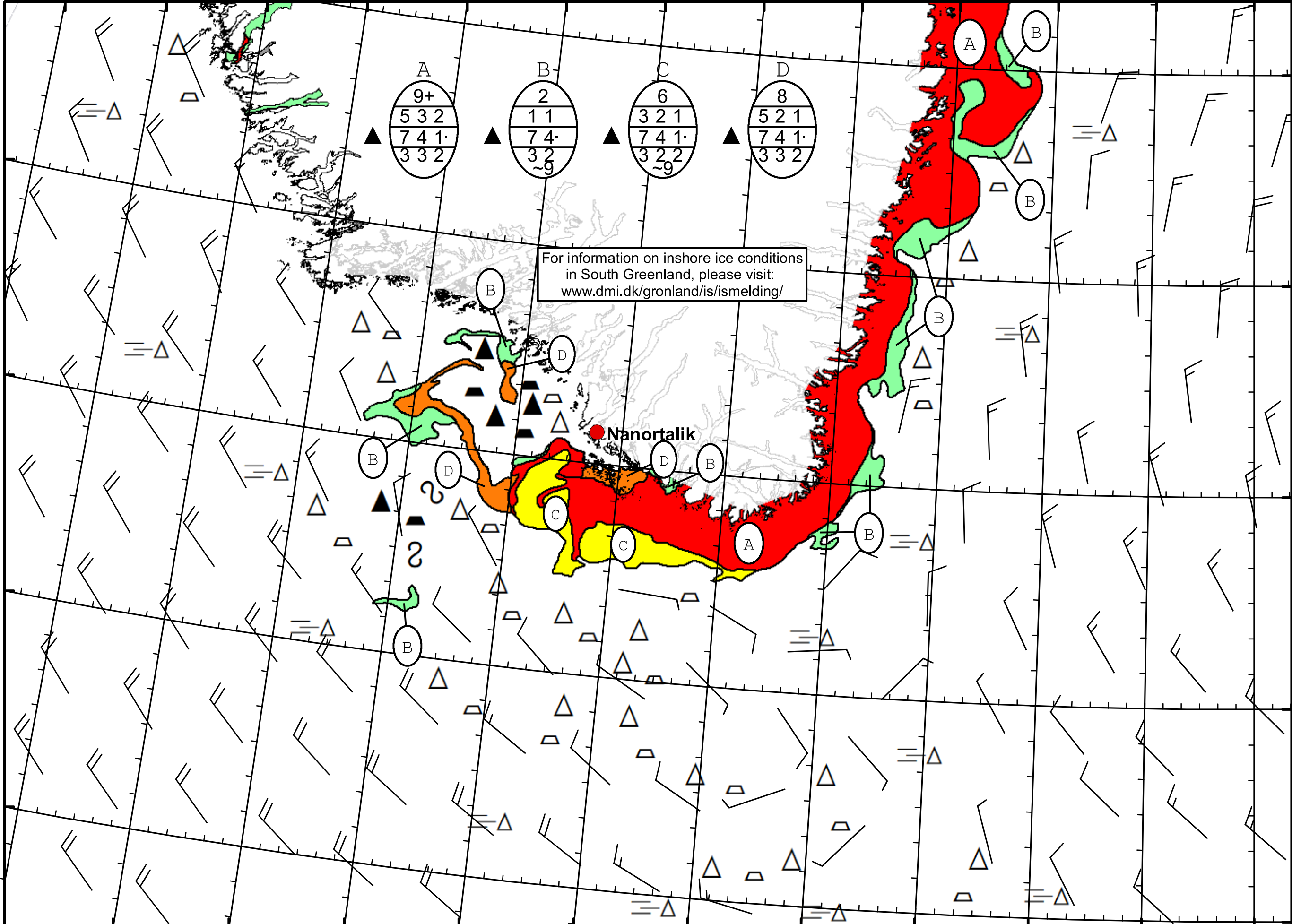


51°W 50°W 49°W 48°W 47°W 46°W 45°W 44°W 43°W 42°W 41°W 40°W 39°W

62°N
61°N
60°N
59°N
58°N



DMI
 Ice Service
Cape Farewell Ice Chart
 Danish Meteorological Institute
 Valid: 11 March 2020, 20:40 UTC
 Next Chart: 13 March 2020




For information on inshore ice conditions
in South Greenland, please visit:
www.dmi.dk/gronland/is/ismelding/

| | | | |
|-------|-----|-------|-------|
| A | B | C | D |
| 9+ | 2 | 6 | 8 |
| 5 3 2 | 1 1 | 3 2 1 | 5 2 1 |
| 7 4 1 | 7 4 | 7 4 1 | 7 4 1 |
| 3 3 2 | 3 2 | 3 2 2 | 3 3 2 |

Nanortalik

49°W 48°W 47°W 46°W 45°W 44°W 43°W 42°W 41°W 40°W 39°W