


51°W 50°W 49°W 48°W 47°W 46°W 45°W 44°W 43°W 42°W 41°W



 DMI

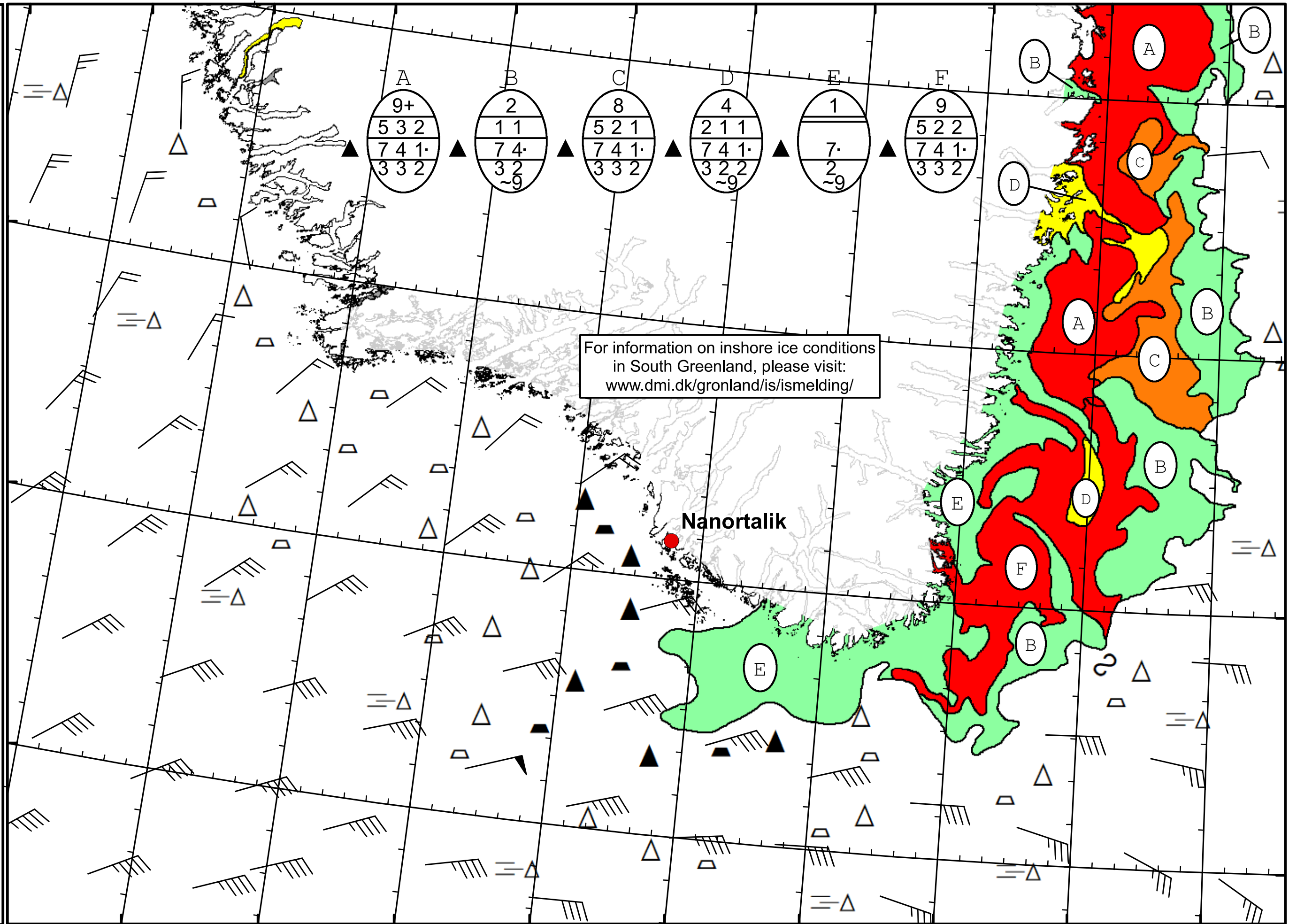
 Ice Service

Cape Farewell Ice Chart

 Danish Meteorological Institute

 Valid: 21 March 2020, 20:30 UTC

 Next Chart: 25 March 2020



For information on inshore ice conditions in South Greenland, please visit: www.dmi.dk/gronland/is/ismelding/

Nanortalik

49°W 48°W 47°W 46°W 45°W 44°W 43°W 42°W 41°W

62°N 61°N 60°N 59°N