

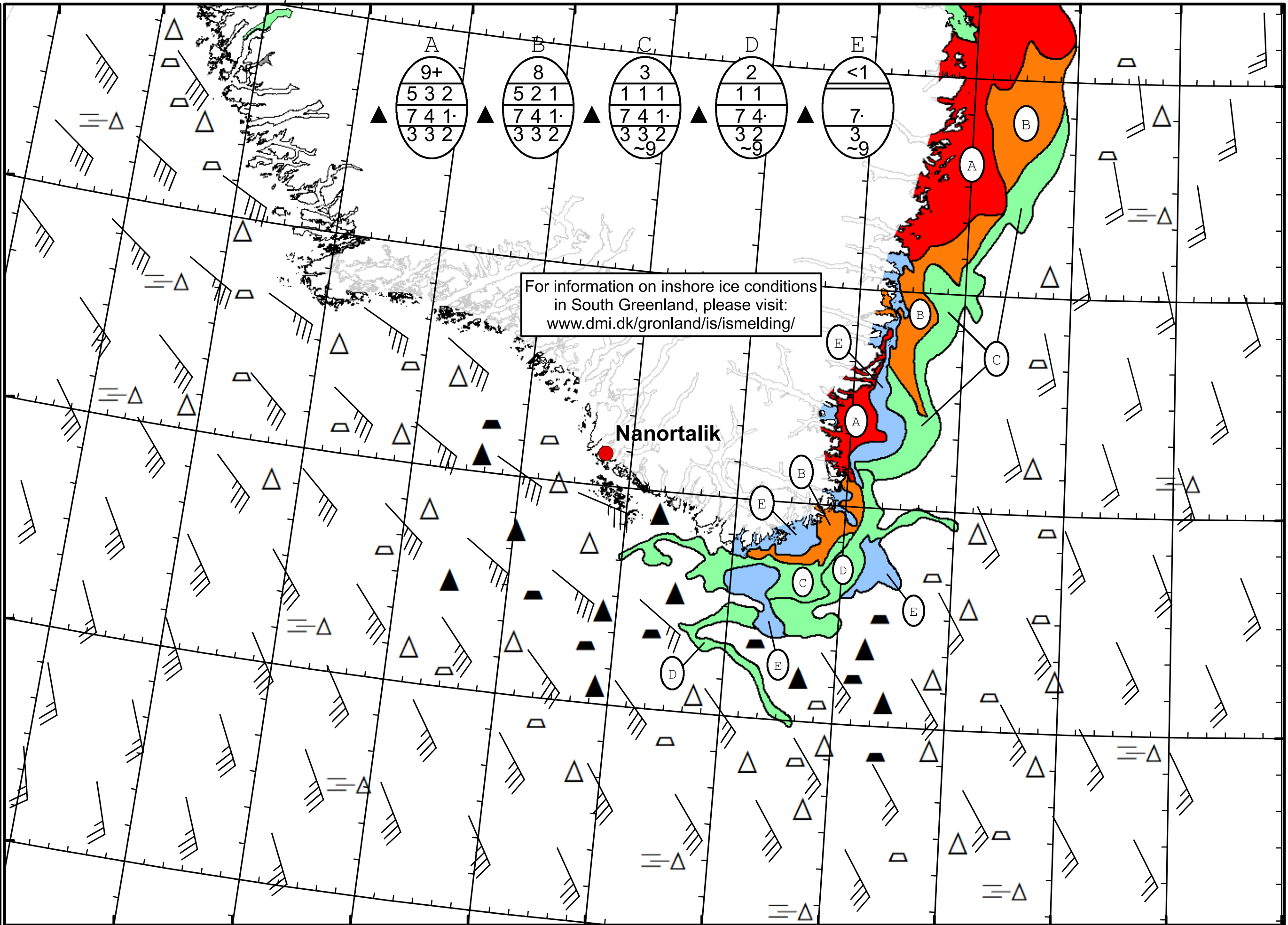
51°W 50°W 49°W 48°W 47°W 46°W 45°W 44°W 43°W 42°W 41°W 40°W 39°W

62°N

61°N

60°N

59°N



For information on inshore ice conditions
in South Greenland, please visit:
www.dmi.dk/gronland/is/ismelding/

Nanortalik

A

9+
5 3 2
7 4 1
3 3 2

B

8
5 2 1
7 4 1
3 3 2

C

3
1 1 1
7 4 1
3 3 2
~9

D

2
1 1
7 4
3 2
~9

E

<1
7
3
~9



DMI

Ice Service

Cape Farewell Ice Chart
Danish Meteorological Institute

Valid: 28 March 2020, 20:45 UTC
Next Chart: 30 March 2020

49°W 48°W 47°W 46°W 45°W 44°W 43°W 42°W 41°W 40°W 39°W