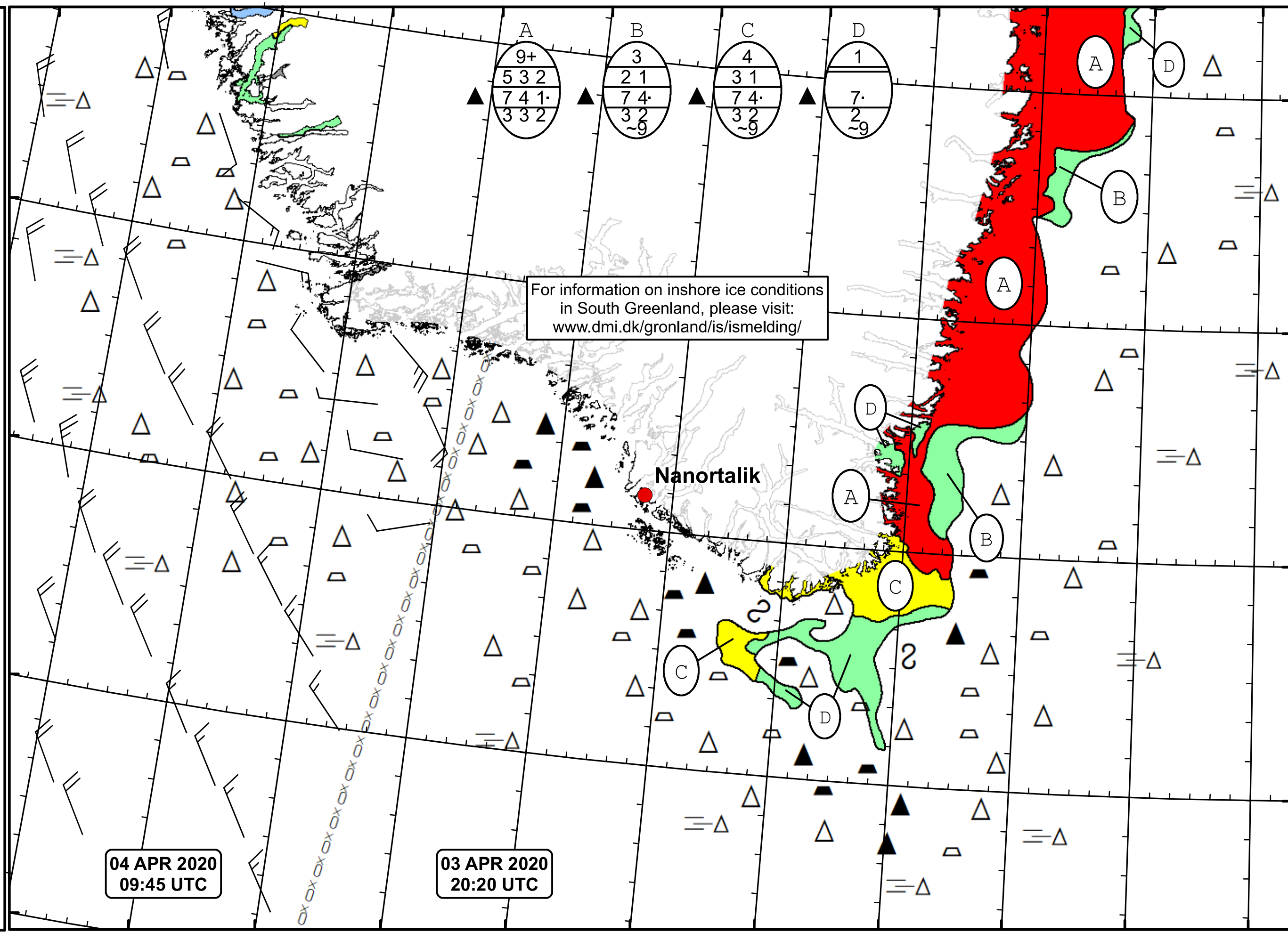


51°W 50°W 49°W 48°W 47°W 46°W 45°W 44°W 43°W 42°W 41°W 40°W



Cape Farewell Ice Chart
Danish Meteorological Institute

Valid: 04 April 2020, 09:45 UTC
Next Chart: 06 April 2020



For information on inshore ice conditions
in South Greenland, please visit:
www.dmi.dk/gronland/is/ismelding/

Nanortalik

04 APR 2020
09:45 UTC

03 APR 2020
20:20 UTC

49°W 48°W 47°W 46°W 45°W 44°W 43°W 42°W 41°W 40°W

62°N
61°N
60°N
59°N