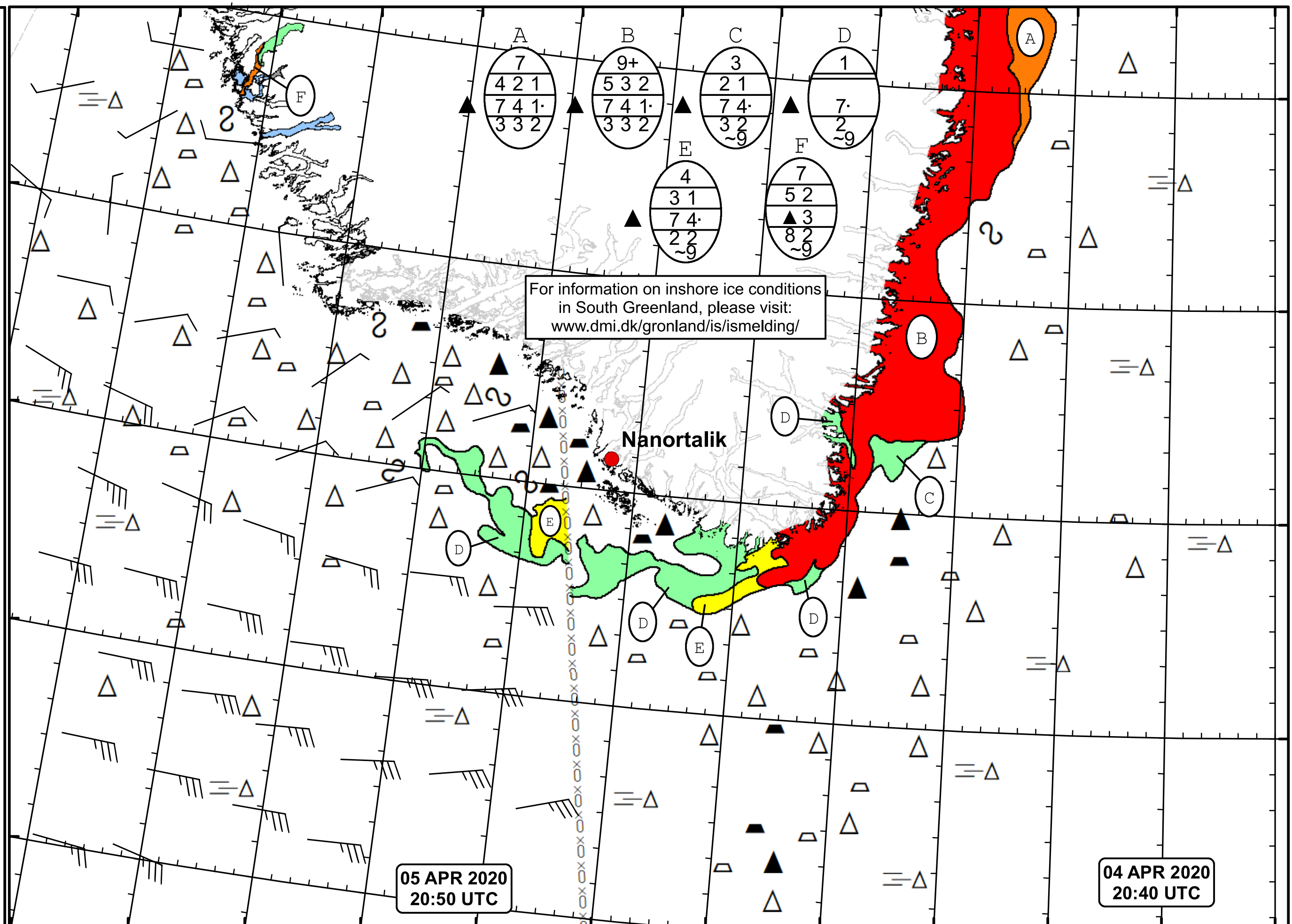


51°W 50°W 49°W 48°W 47°W 46°W 45°W 44°W 43°W 42°W 41°W 40°W 39°W

DMI  
Ice Service  
Danish Meteorological Institute  
Cape Farewell Ice Chart  
Valid: 05 April 2020, 20:50 UTC  
Next Chart: 08 April 2020



For information on inshore ice conditions  
in South Greenland, please visit:  
[www.dmi.dk/gronland/is/ismelding/](http://www.dmi.dk/gronland/is/ismelding/)

Nanortalik

05 APR 2020  
20:50 UTC

04 APR 2020  
20:40 UTC

50°W 49°W 48°W 47°W 46°W 45°W 44°W 43°W 42°W 41°W 40°W 39°W

62°N  
61°N  
60°N  
59°N

A	B	C	D
7	9+	3	1
4 2 1	5 3 2	2 1	7
7 4 1	7 4 1	7 4	2
3 3 2	3 3 2	3 2	9

E	F
4	7
3 1	5 2
7 4	▲ 3
2 2	8 2
9	9