

51°W 50°W 49°W 48°W 47°W 46°W 45°W 44°W 43°W 42°W 41°W 40°W

62°N

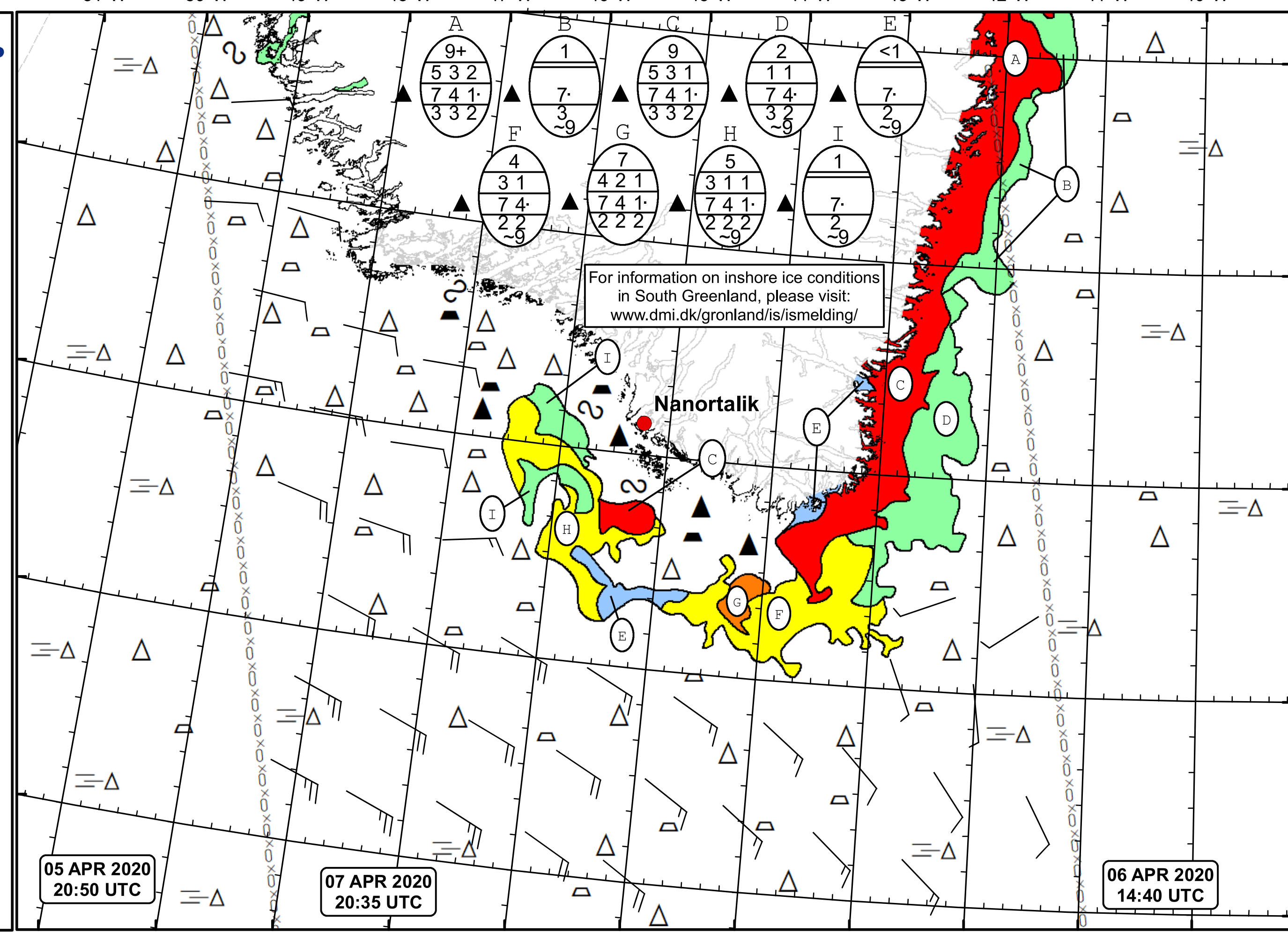
61°N

60°N

59°N

58°N

DMI
Ice Service
Danish Meteorological Institute
Cape Farewell Ice Chart
Valid: 07 April 2020, 20:35 UTC
Next Chart: 10 April 2020



For information on inshore ice conditions in South Greenland, please visit: www.dmi.dk/gronland/is/ismelding/

Nanortalik

05 APR 2020
20:50 UTC

07 APR 2020
20:35 UTC

06 APR 2020
14:40 UTC

50°W 49°W 48°W 47°W 46°W 45°W 44°W 43°W 42°W 41°W 40°W