

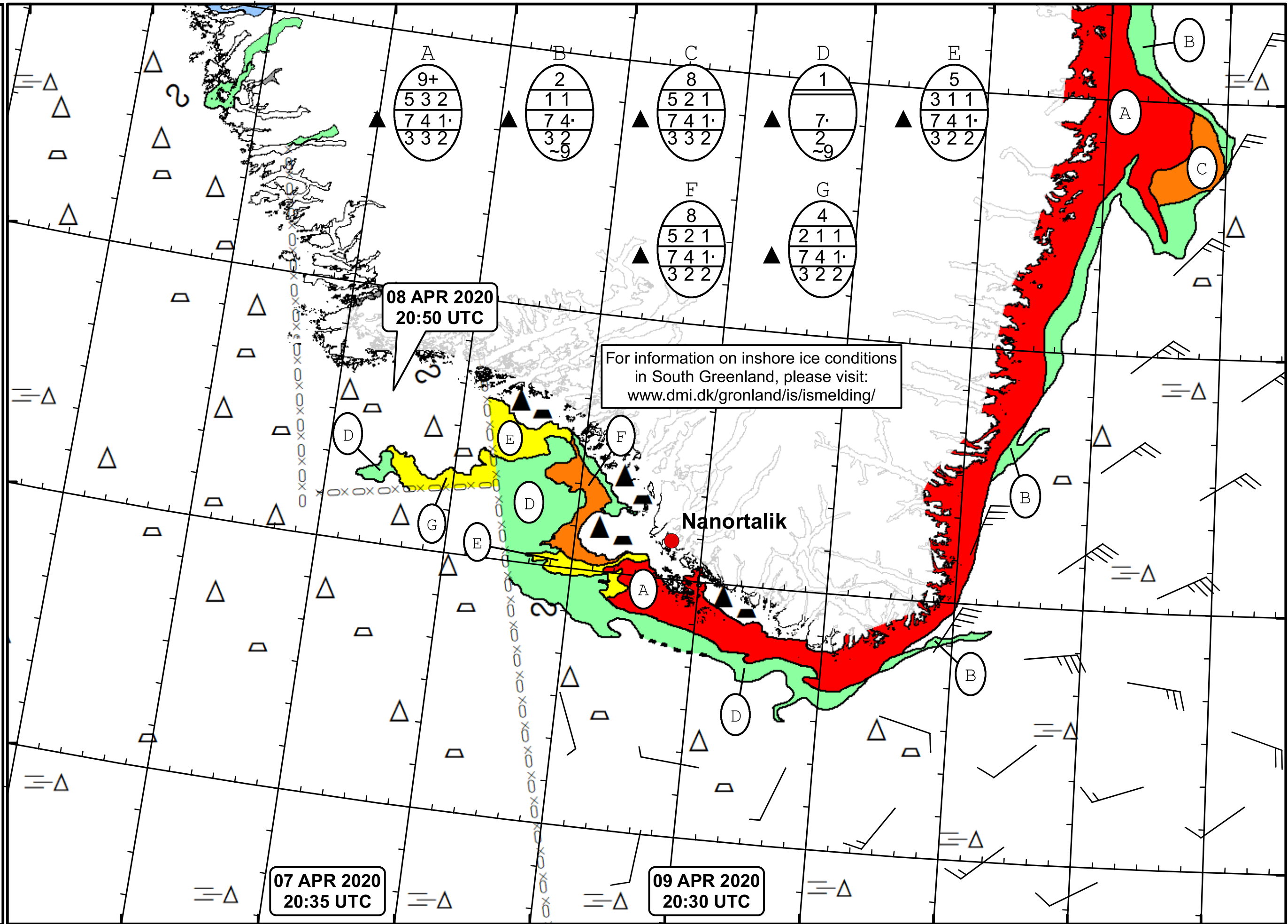
51°W 50°W 49°W 48°W 47°W 46°W 45°W 44°W 43°W 42°W 41°W



DMI  
Ice Service  
Danish Meteorological Institute

Cape Farewell Ice Chart

Valid: 09 April 2020, 20:30 UTC  
Next Chart: 12 April 2020



08 APR 2020  
20:50 UTC

For information on inshore ice conditions  
in South Greenland, please visit:  
[www.dmi.dk/gronland/is/ismelding/](http://www.dmi.dk/gronland/is/ismelding/)

Nanortalik

07 APR 2020  
20:35 UTC

09 APR 2020  
20:30 UTC

49°W 48°W 47°W 46°W 45°W 44°W 43°W 42°W 41°W

62°N

61°N

60°N

59°N