

51°W 50°W 49°W 48°W 47°W 46°W 45°W 44°W 43°W 42°W 41°W



 DMI


 Ice Service

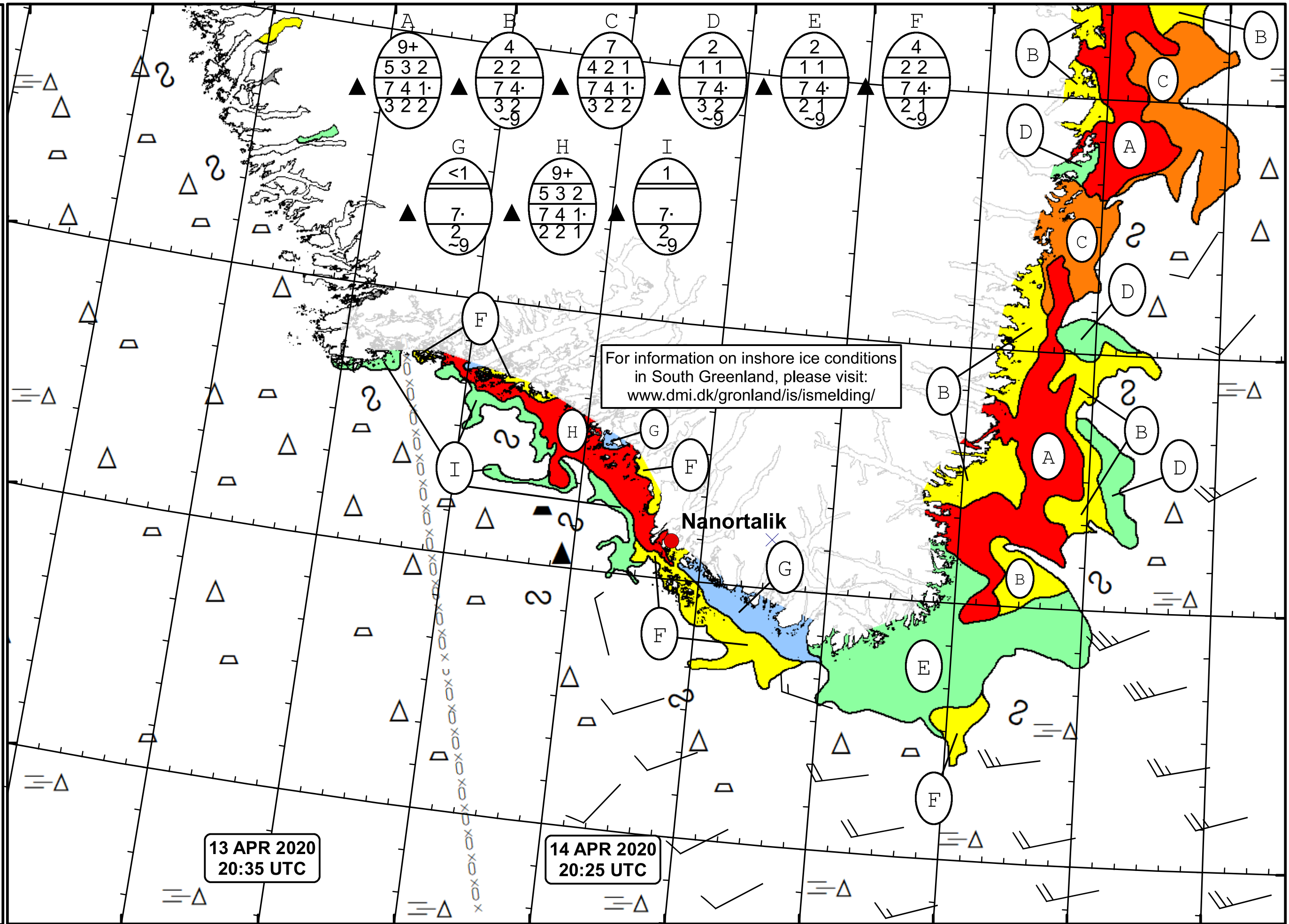
 Danish Meteorological Institute

 Cape Farewell Ice Chart

 Valid: 14 April 2020, 20:25 UTC

 Next Chart: 17 April 2020





62°N

61°N

60°N

59°N

49°W 48°W 47°W 46°W 45°W 44°W 43°W 42°W 41°W

A	B	C	D	E	F
9+	4	7	2	2	4
5 3 2	2 2	4 2 1	1 1	1 1	2 2
7 4 1	7 4	7 4 1	7 4	7 4	7 4
3 2 2	3 2	3 2 2	3 2	2 1	2 1
	~9		~9	~9	~9

G	H	I
<1	9+	1
7	5 3 2	7
2	7 4 1	2
~9	2 2 1	~9

For information on inshore ice conditions in South Greenland, please visit: www.dmi.dk/gronland/is/ismelding/

13 APR 2020
20:35 UTC

14 APR 2020
20:25 UTC

Nanortalik