

51°W 50°W 49°W 48°W 47°W 46°W 45°W 44°W 43°W 42°W 41°W



 DMI

 Ice Service

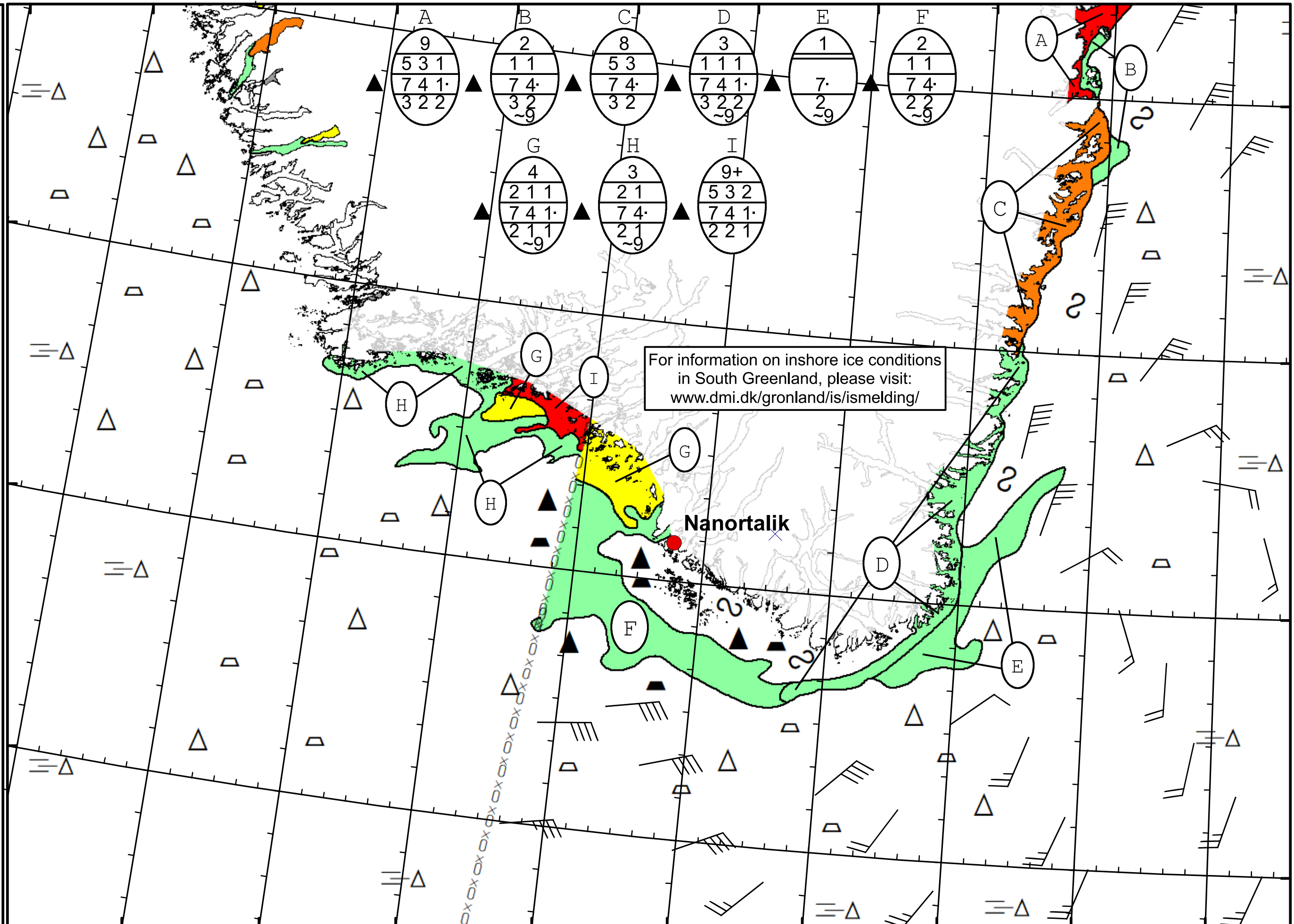
 Danish Meteorological Institute

 Cape Farewell Ice Chart

 Valid: 22 April 2020, 20:55 UTC

 Next Chart: 24 April 2020





A 9 5 3 1 7 4 1 3 2 2	B 2 1 1 7 4 3 2 ~9	C 8 5 3 7 4 3 2	D 3 1 1 1 7 4 1 3 2 2 ~9	E 1 7 2 ~9	F 2 1 1 7 4 2 2 ~9
G 4 2 1 1 7 4 1 2 1 1 ~9	H 3 2 1 7 4 2 1 ~9	I 9+ 5 3 2 7 4 1 2 2 1			

For information on inshore ice conditions in South Greenland, please visit: www.dmi.dk/gronland/is/ismelding/

Nanortalik

49°W 48°W 47°W 46°W 45°W 44°W 43°W 42°W 41°W

62°N

61°N

60°N

59°N