


51°W 50°W 49°W 48°W 47°W 46°W 45°W 44°W 43°W 42°W 41°W



 DMI


 Ice Service

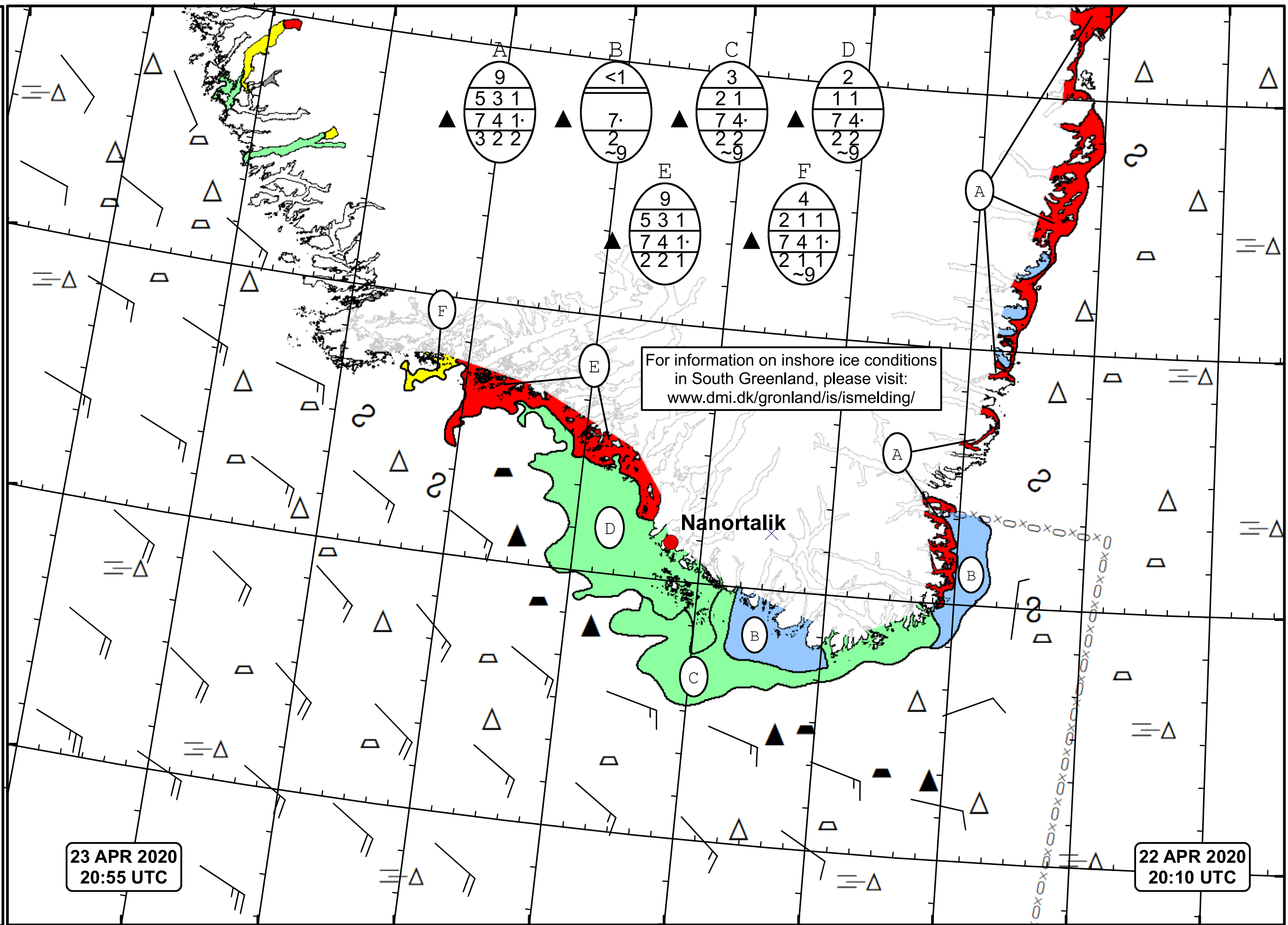
 Danish Meteorological Institute

 Cape Farewell Ice Chart

 Valid: 23 April 2020, 20:55 UTC

 Next Chart: 26 April 2020





A	B	C	D
9	<1	3	2
5 3 1		2 1	1 1
7 4 1	7	7 4	7 4
3 2 2	2	2 2	2 2
	~9	~9	~9

E	F
9	4
5 3 1	2 1 1
7 4 1	7 4 1
2 2 1	2 1 1
	~9

For information on inshore ice conditions in South Greenland, please visit: www.dmi.dk/gronland/is/ismelding/

Nanortalik

23 APR 2020
20:55 UTC

22 APR 2020
20:10 UTC

49°W 48°W 47°W 46°W 45°W 44°W 43°W 42°W 41°W

62°N
61°N
60°N
59°N