


51°W 50°W 49°W 48°W 47°W 46°W 45°W 44°W 43°W 42°W 41°W



 DMI


 Ice Service

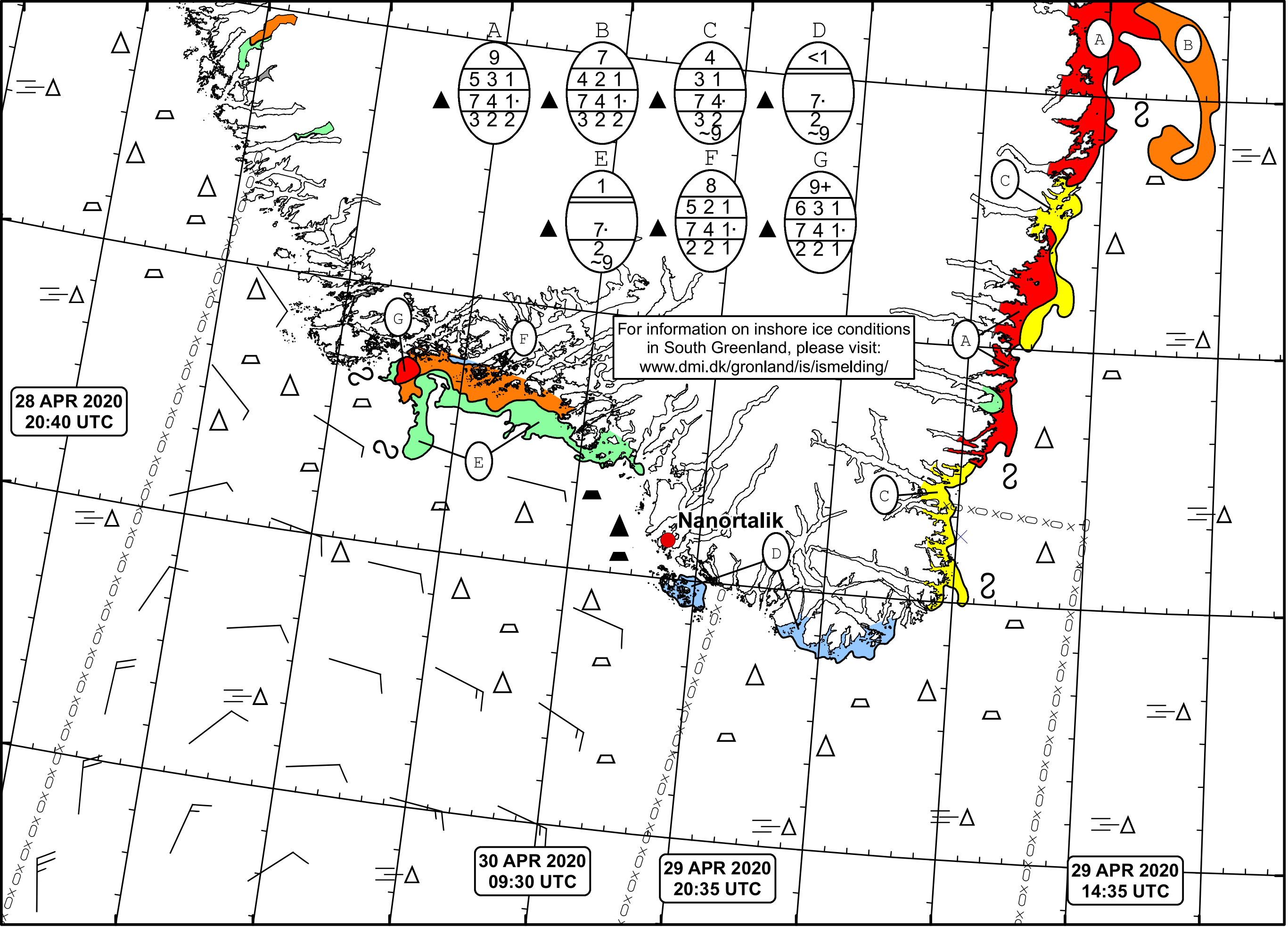
 Danish Meteorological Institute

 Cape Farewell Ice Chart

 Valid: 30 April 2020, 09:30 UTC

 Next Chart: 01 May 2020





28 APR 2020
20:40 UTC

30 APR 2020
09:30 UTC

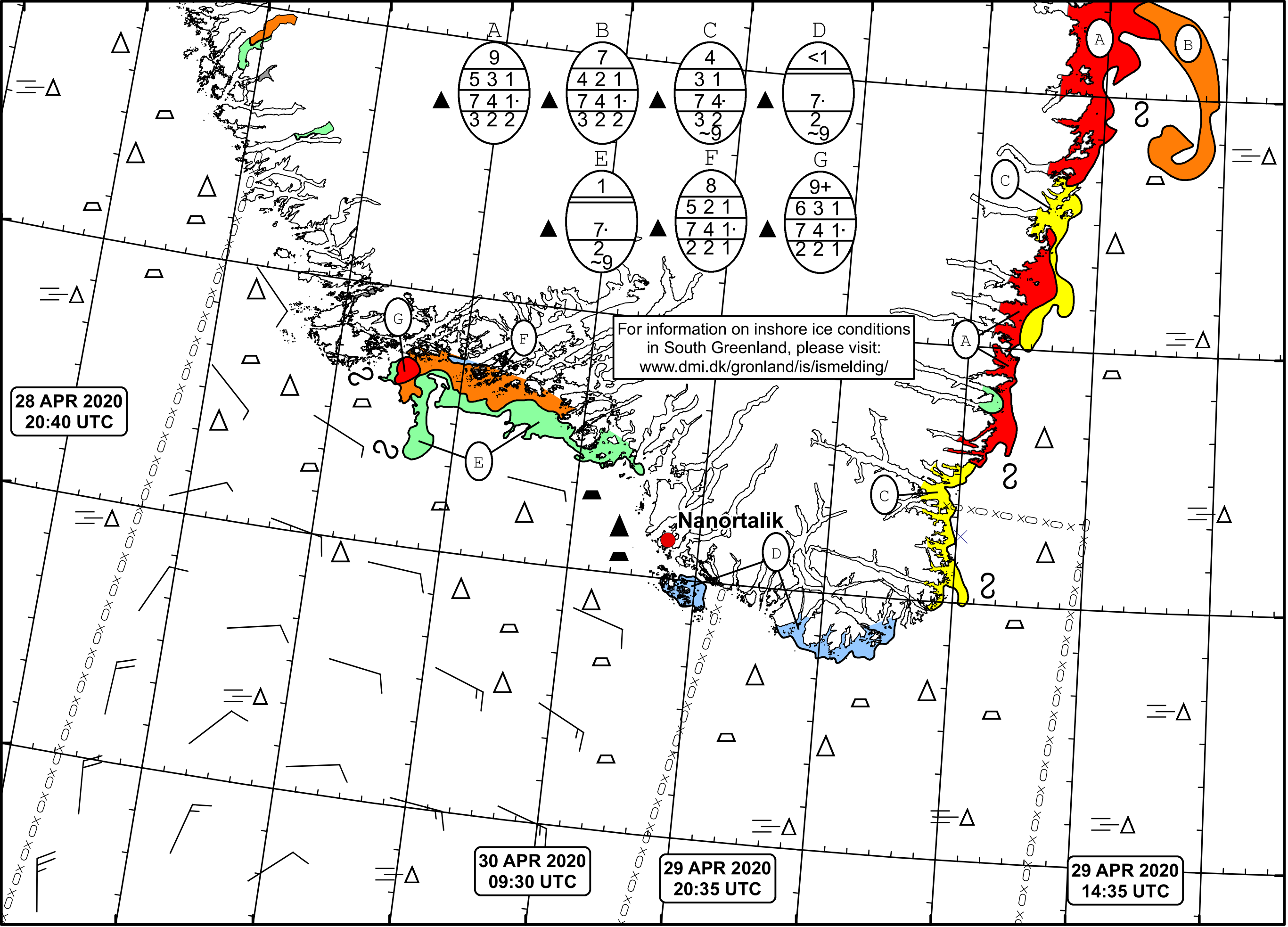
29 APR 2020
20:35 UTC

29 APR 2020
14:35 UTC

For information on inshore ice conditions
in South Greenland, please visit:
www.dmi.dk/gronland/is/ismelding/

A	B	C	D
9	7	4	<1
5 3 1	4 2 1	3 1	7
7 4 1	7 4 1	7 4	2
3 2 2	3 2 2	3 2	9
	E	F	G
	1	8	9+
	7	5 2 1	6 3 1
	2	7 4 1	7 4 1
	9	2 2 1	2 2 1

Nanortalik



49°W 48°W 47°W 46°W 45°W 44°W 43°W 42°W 41°W

62°N

61°N

60°N

59°N