


51°W 50°W 49°W 48°W 47°W 46°W 45°W 44°W 43°W 42°W 41°W



 DMI


 Ice Service

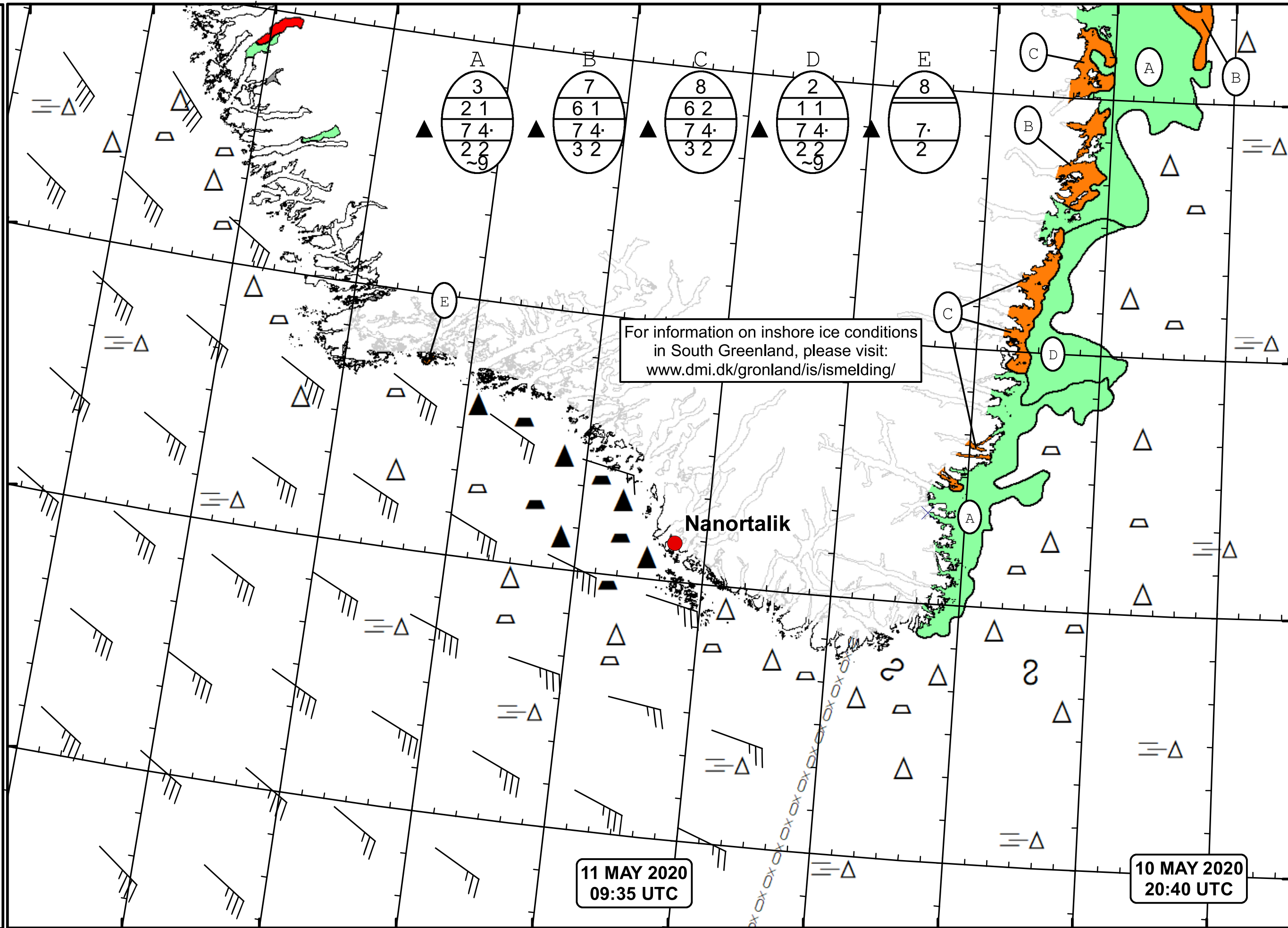
 Danish Meteorological Institute

 Cape Farewell Ice Chart

 Valid: 11 May 2020, 09:35 UTC

 Next Chart: 13 May 2020





For information on inshore ice conditions in South Greenland, please visit: www.dmi.dk/gronland/is/ismelding/

Nanortalik

11 MAY 2020
09:35 UTC

10 MAY 2020
20:40 UTC

49°W 48°W 47°W 46°W 45°W 44°W 43°W 42°W 41°W

62°N
61°N
60°N
59°N