

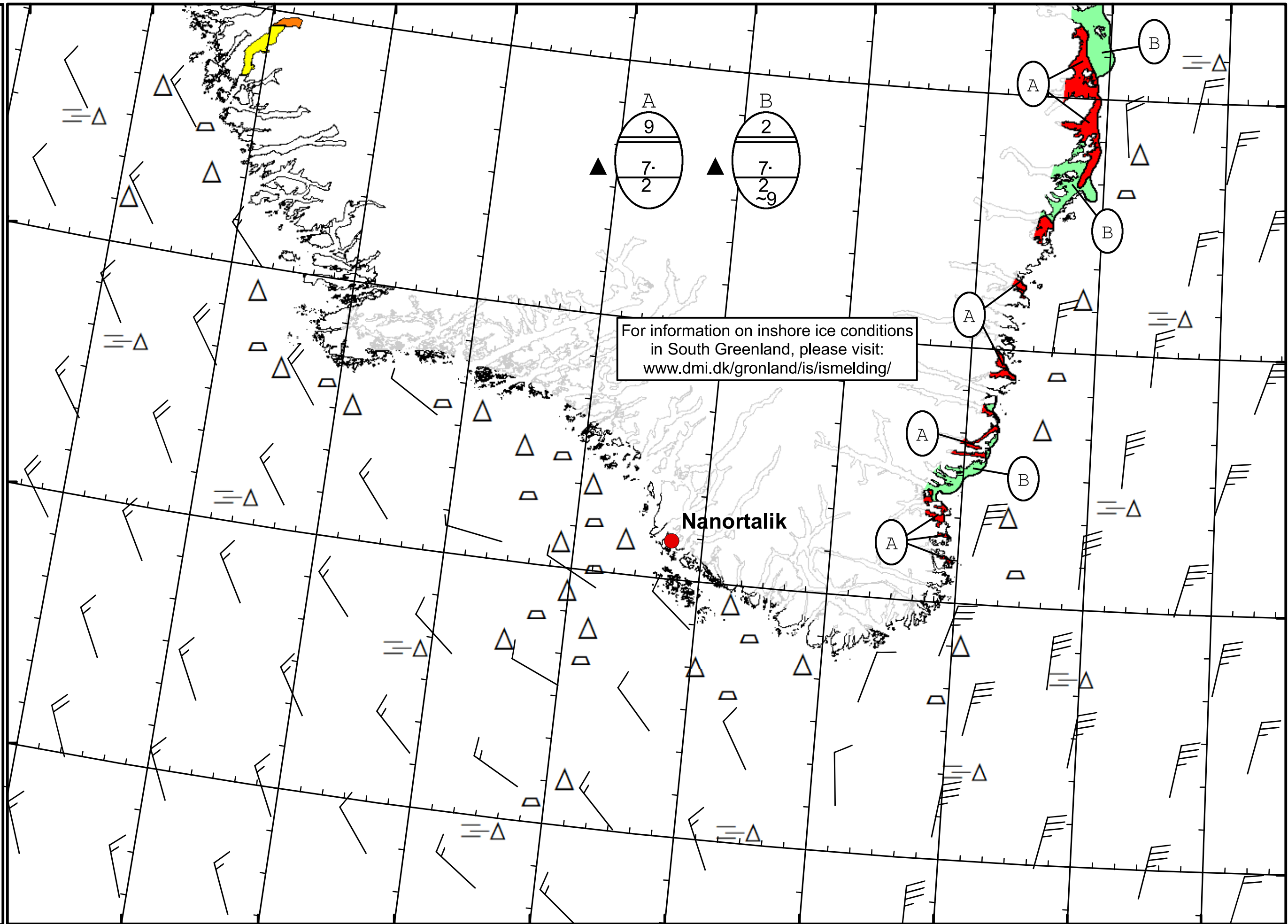


51°W 50°W 49°W 48°W 47°W 46°W 45°W 44°W 43°W 42°W 41°W


  
 DMI
   
 Ice Service
   
**Cape Farewell Ice Chart**
  
 Danish Meteorological Institute
   
 Valid: 19 May 2020, 20:30 UTC
   
 Next Chart: 21 May 2020
   




For information on inshore ice conditions  
in South Greenland, please visit:  
[www.dmi.dk/gronland/is/ismelding/](http://www.dmi.dk/gronland/is/ismelding/)

**Nanortalik**

49°W 48°W 47°W 46°W 45°W 44°W 43°W 42°W 41°W

62°N  
61°N  
60°N  
59°N