


51°W 50°W 49°W 48°W 47°W 46°W 45°W 44°W 43°W 42°W 41°W

62°N

61°N

60°N

59°N



 DMI

 Ice Service

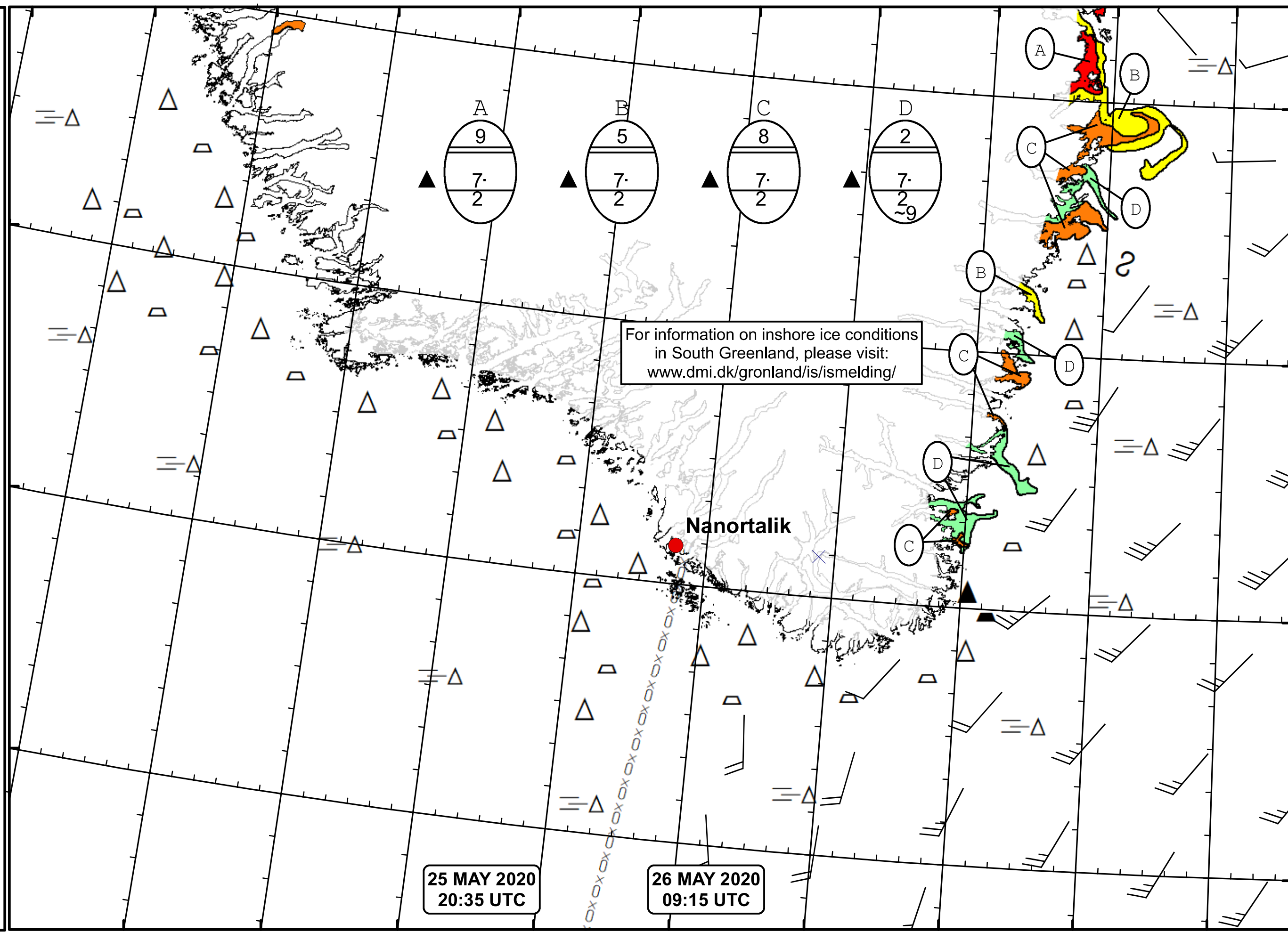
 Danish Meteorological Institute

 Cape Farewell Ice Chart

 Valid: 26 May 2020, 09:15 UTC

 Next Chart: 28 May 2020





25 MAY 2020
20:35 UTC

26 MAY 2020
09:15 UTC

For information on inshore ice conditions
in South Greenland, please visit:
www.dmi.dk/gronland/is/ismelding/

Nanortalik

49°W 48°W 47°W 46°W 45°W 44°W 43°W 42°W 41°W