

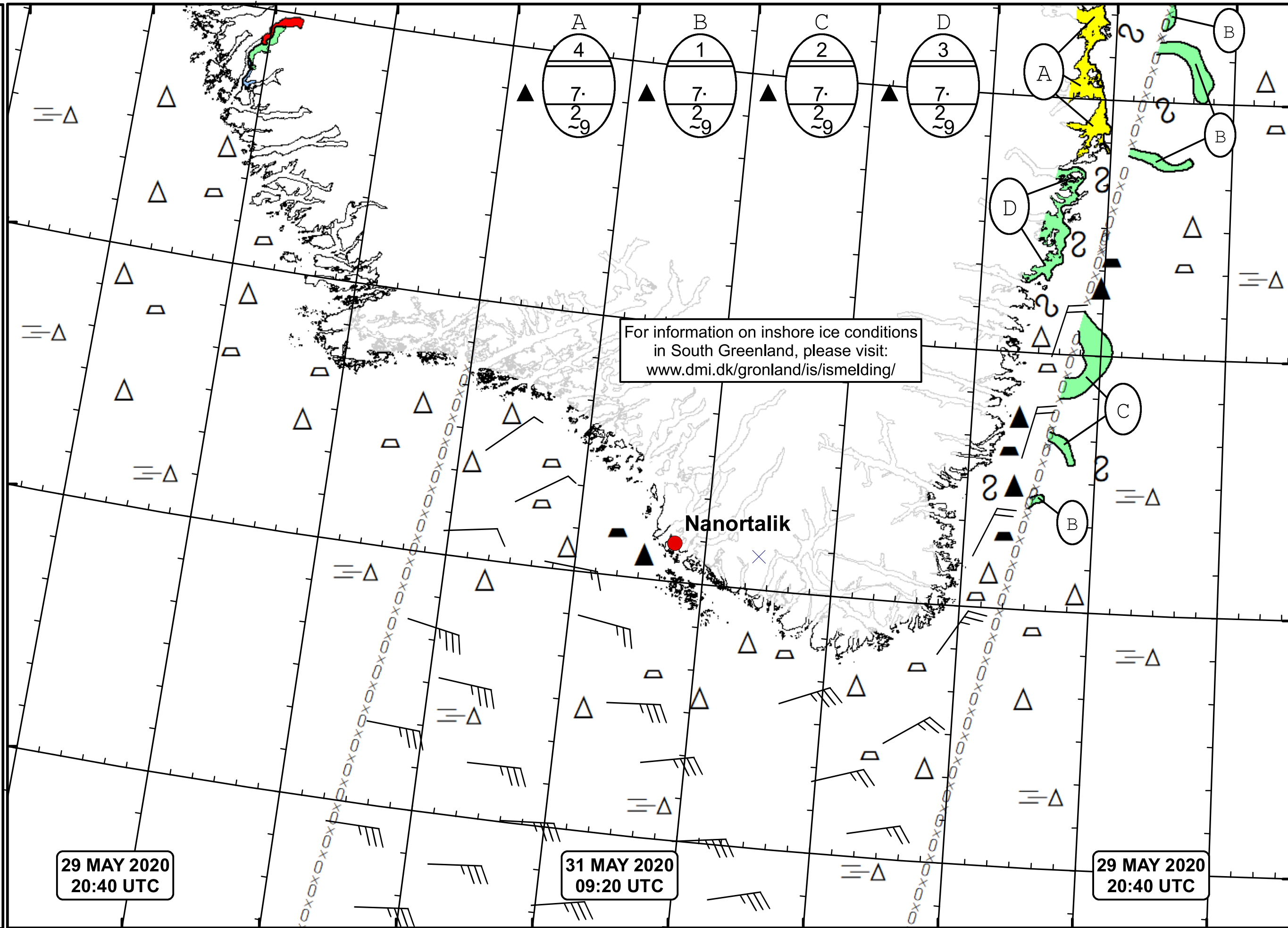


51°W 50°W 49°W 48°W 47°W 46°W 45°W 44°W 43°W 42°W 41°W


  
 DMI
   
 Ice Service
   
**Cape Farewell Ice Chart**
  
 Danish Meteorological Institute
   
 Valid: 31 May 2020, 09:20 UTC
   
 Next Chart: 02 June 2020
   




29 MAY 2020  
20:40 UTC

31 MAY 2020  
09:20 UTC

29 MAY 2020  
20:40 UTC

62°N

61°N

60°N

59°N

For information on inshore ice conditions  
in South Greenland, please visit:  
[www.dmi.dk/gronland/is/ismelding/](http://www.dmi.dk/gronland/is/ismelding/)

Nanortalik