

51°W 50°W 49°W 48°W 47°W 46°W 45°W 44°W 43°W 42°W 41°W

62°N

61°N

60°N

59°N

For information on inshore ice conditions in South Greenland, please visit: www.dmi.dk/gronland/is/ismelding/

Nanortalik

27 JUL 2020
09:45 UTC

24 JUL 2020
20:35 UTC

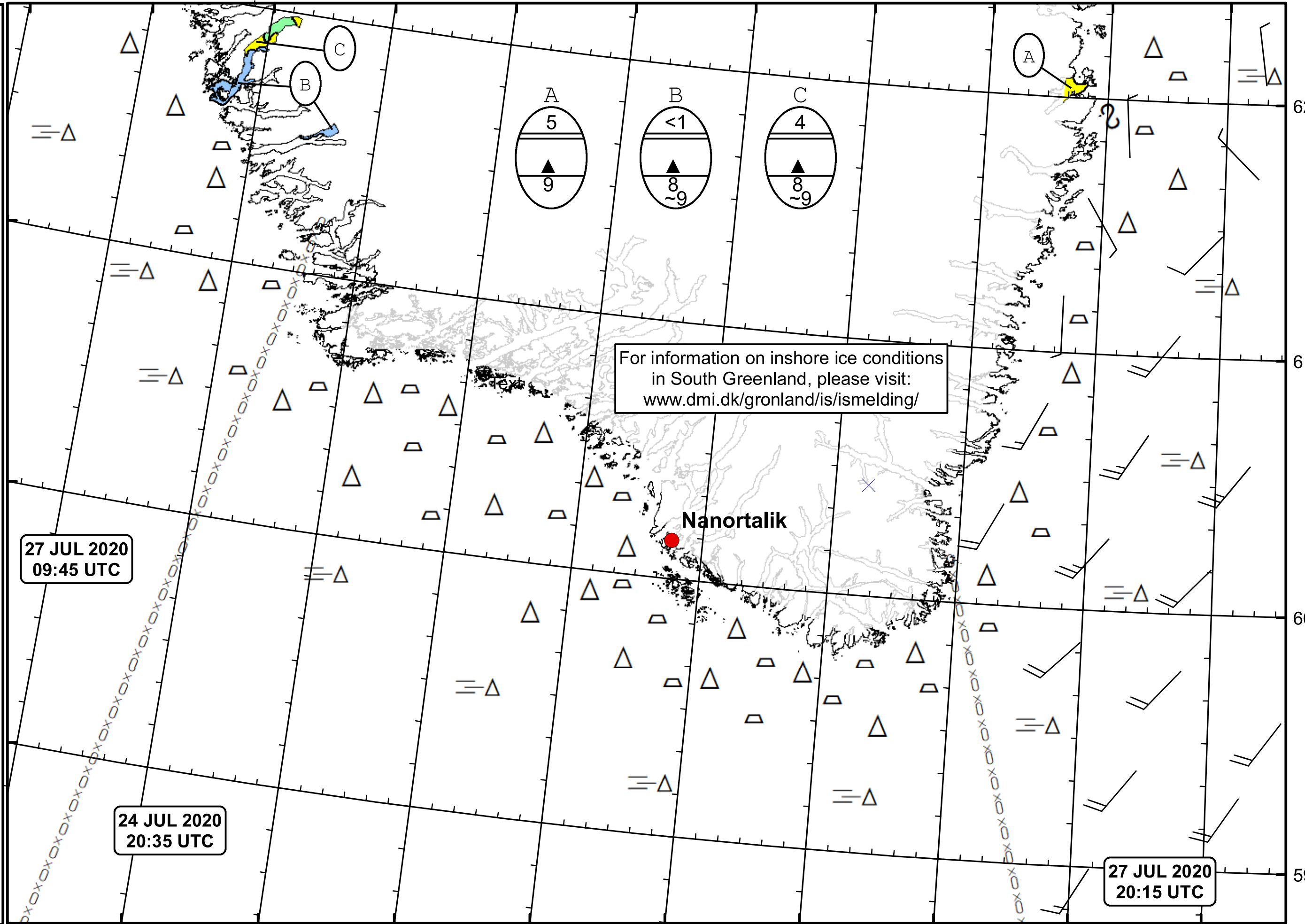
27 JUL 2020
20:15 UTC



DMI
Ice Service

Cape Farewell Ice Chart
Danish Meteorological Institute

Valid: 27 July 2020, 20:15 UTC
Next Chart: 31 July 2020



49°W 48°W 47°W 46°W 45°W 44°W 43°W 42°W 41°W