

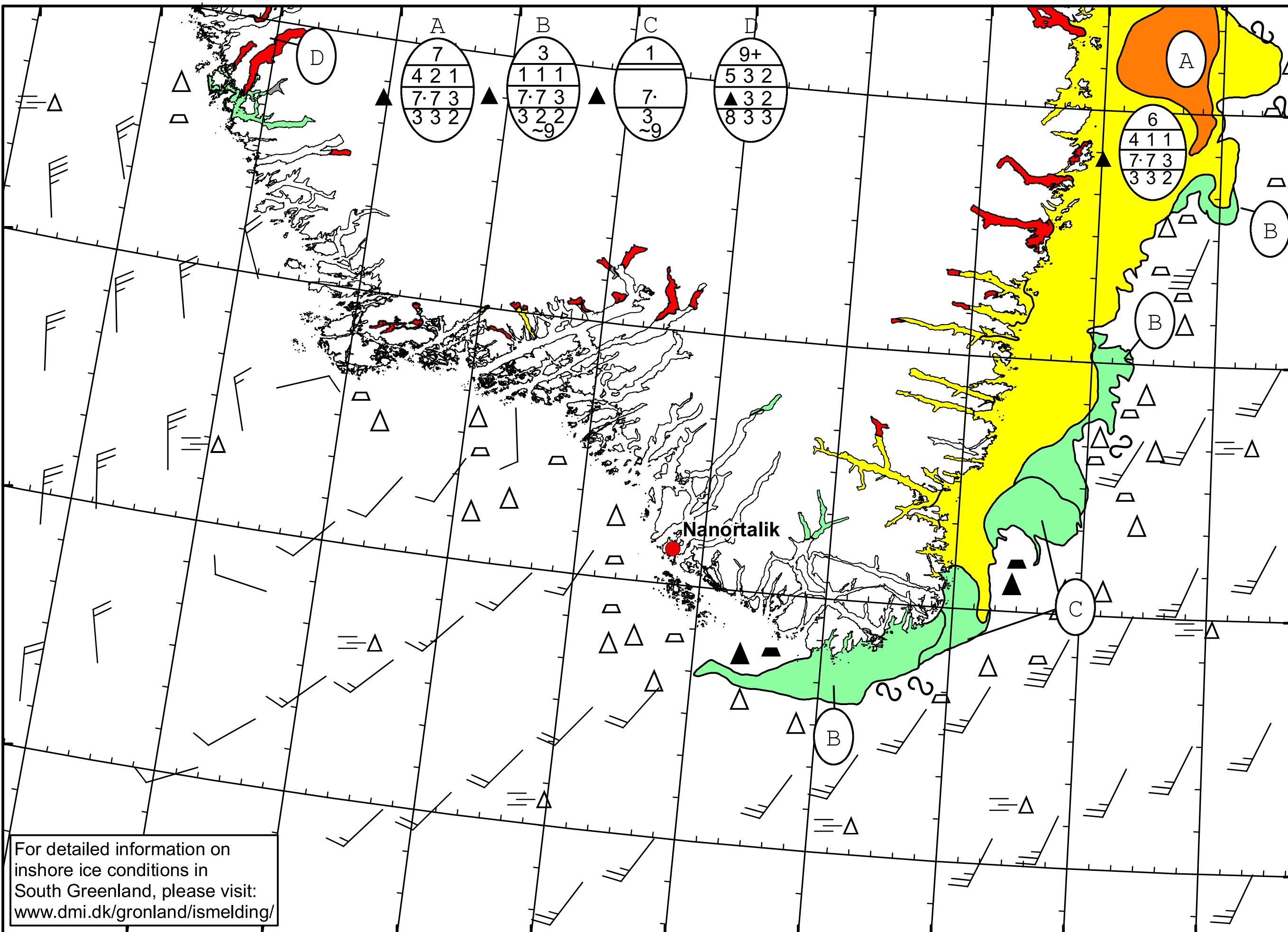
51°W 50°W 49°W 48°W 47°W 46°W 45°W 44°W 43°W 42°W 41°W

62°N

61°N

60°N

59°N



Cape Farewell Ice Chart  
 Valid: 07 January 2021, 20:35 UTC  
 Next Chart: 10 January 2021



For detailed information on inshore ice conditions in South Greenland, please visit: [www.dmi.dk/gronland/ismelding/](http://www.dmi.dk/gronland/ismelding/)

49°W 48°W 47°W 46°W 45°W 44°W 43°W 42°W 41°W