

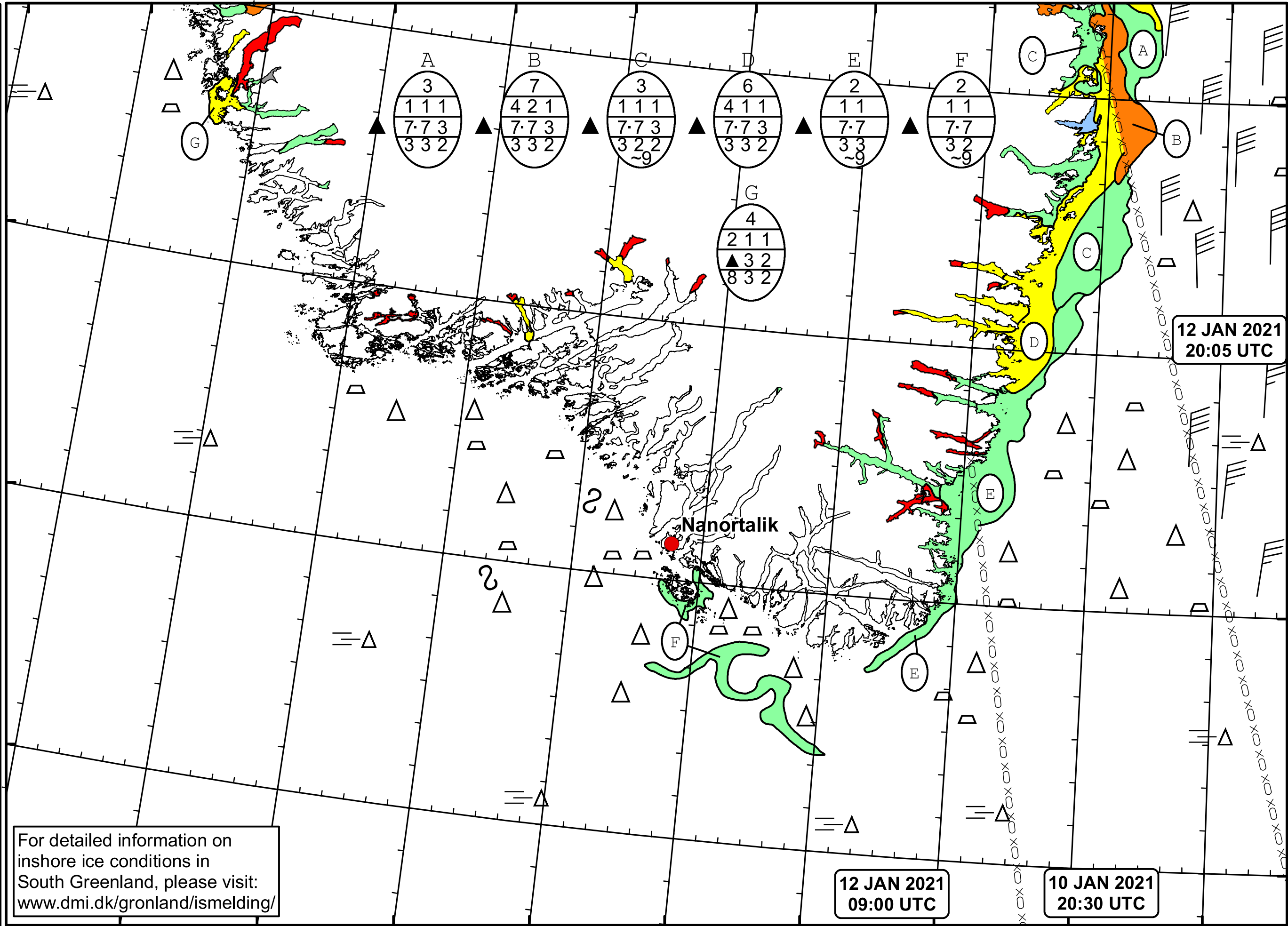
51°W 50°W 49°W 48°W 47°W 46°W 45°W 44°W 43°W 42°W 41°W



62°N

61°N

60°N

59°N



 **DMI**
 Ice Service
Cape Farewell Ice Chart
 Danish Meteorological Institute
 Valid: 12 January 2021, 20:05 UTC
 Next Chart: 15 January 2021


For detailed information on inshore ice conditions in South Greenland, please visit: www.dmi.dk/gronland/ismelding/

49°W 48°W 47°W 46°W 45°W 44°W 43°W 42°W 41°W