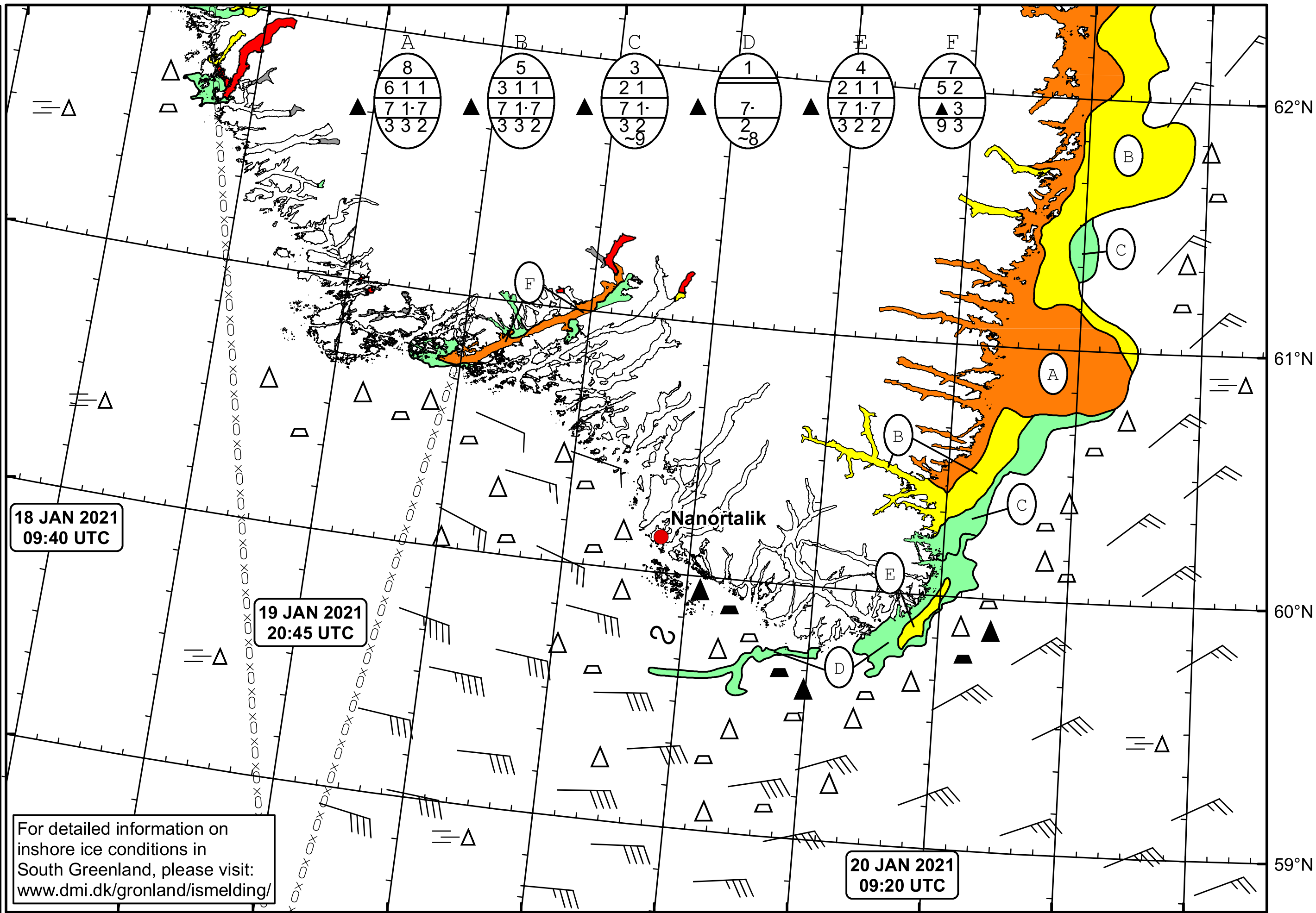





51°W 50°W 49°W 48°W 47°W 46°W 45°W 44°W 43°W 42°W 41°W



 DMI  
 Ice Service  
 Cape Farewell Ice Chart  
 Danish Meteorological Institute  
 Valid: 20 January 2021, 09:20 UTC  
 Next Chart: 22 January 2021  


18 JAN 2021  
09:40 UTC

19 JAN 2021  
20:45 UTC

20 JAN 2021  
09:20 UTC

For detailed information on  
inshore ice conditions in  
South Greenland, please visit:  
[www.dmi.dk/gronland/ismelding/](http://www.dmi.dk/gronland/ismelding/)

Nanortalik