

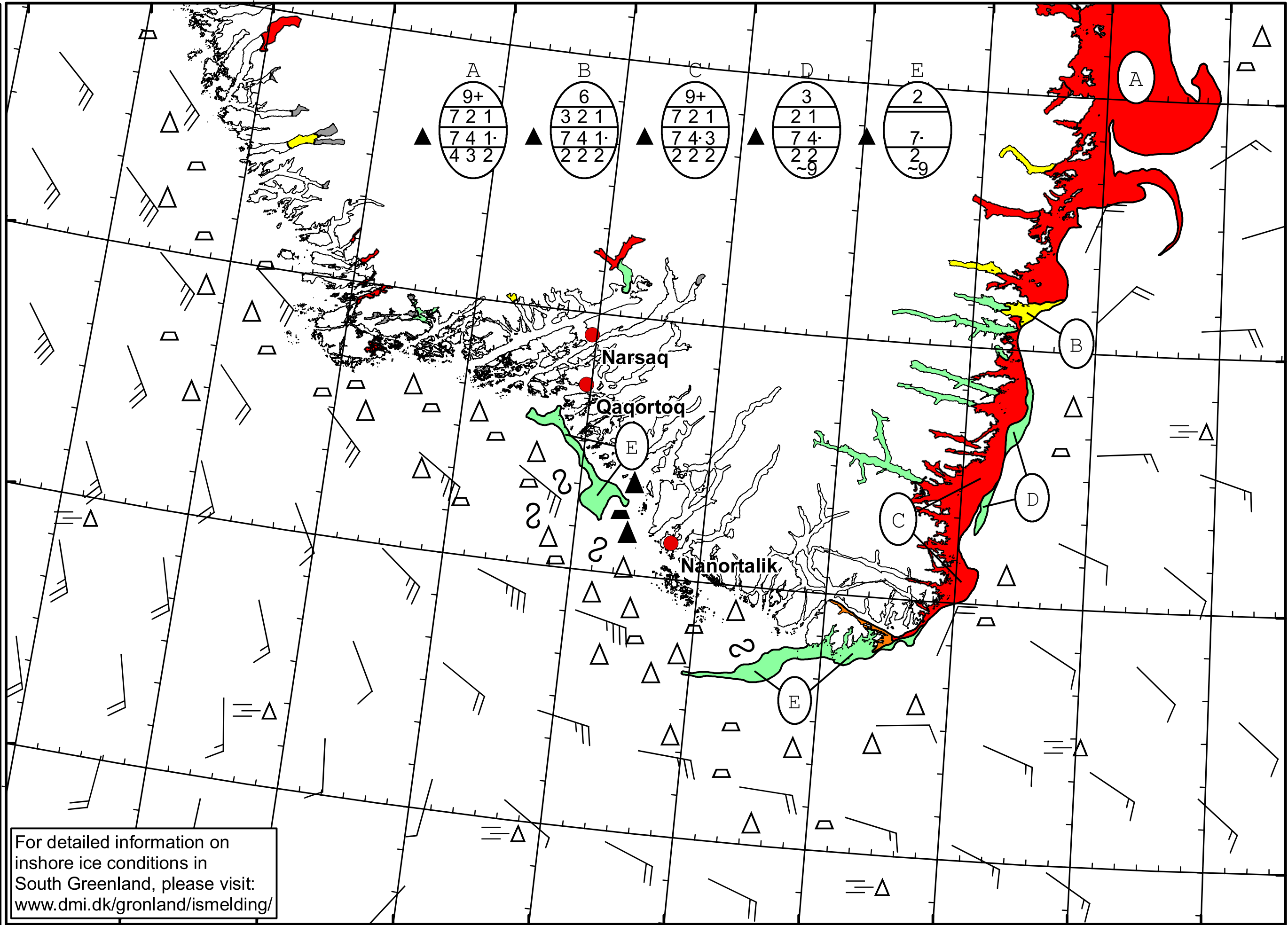
51°W 50°W 49°W 48°W 47°W 46°W 45°W 44°W 43°W 42°W 41°W

62°N

61°N

60°N

59°N



DMI

Ice Service

Danish Meteorological Institute

Valid: 06 March 2021, 20:40 UTC
Next Chart: 09 March 2021



For detailed information on inshore ice conditions in South Greenland, please visit: www.dmi.dk/gronland/ismelding/