


51°W 50°W 49°W 48°W 47°W 46°W 45°W 44°W 43°W 42°W 41°W



 DMI

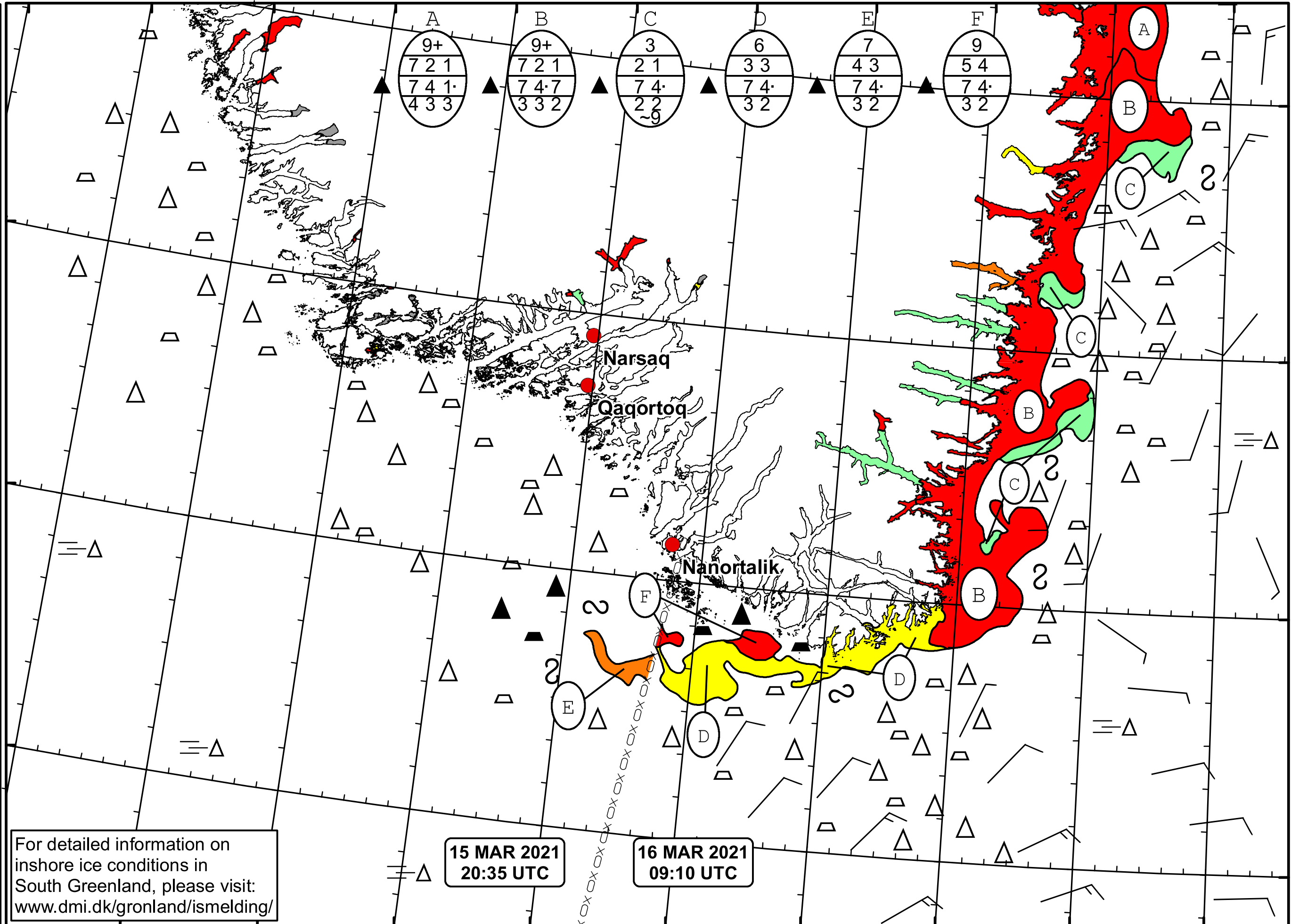
 Ice Service

 Danish Meteorological Institute

 Cape Farewell Ice Chart

 Valid: 16 March 2021, 09:10 UTC

 Next Chart: 18 March 2021



For detailed information on inshore ice conditions in South Greenland, please visit:
www.dmi.dk/gronland/ismelding/

15 MAR 2021
20:35 UTC

16 MAR 2021
09:10 UTC

49°W 48°W 47°W 46°W 45°W 44°W 43°W 42°W 41°W

62°N 61°N 60°N 59°N