

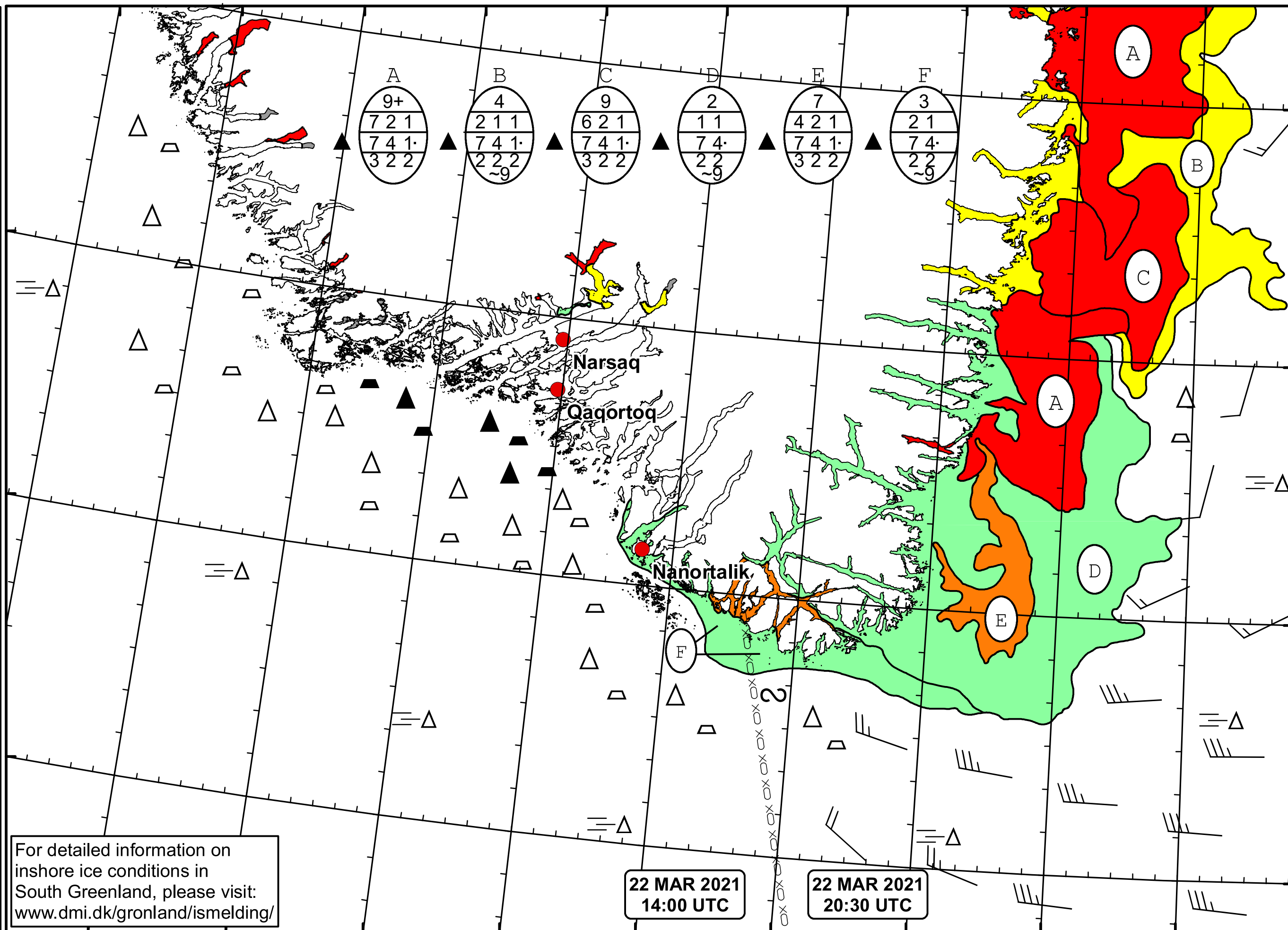
50°W 49°W 48°W 47°W 46°W 45°W 44°W 43°W 42°W 41°W

62°N

61°N

60°N

59°N



DMI
Ice Service

Cape Farewell Ice Chart
Danish Meteorological Institute

Valid: 22 March 2021, 20:30 UTC
Next Chart: 24 March 2021



For detailed information on inshore ice conditions in South Greenland, please visit: www.dmi.dk/gronland/ismelding/

22 MAR 2021
14:00 UTC

22 MAR 2021
20:30 UTC

49°W 48°W 47°W 46°W 45°W 44°W 43°W 42°W 41°W