

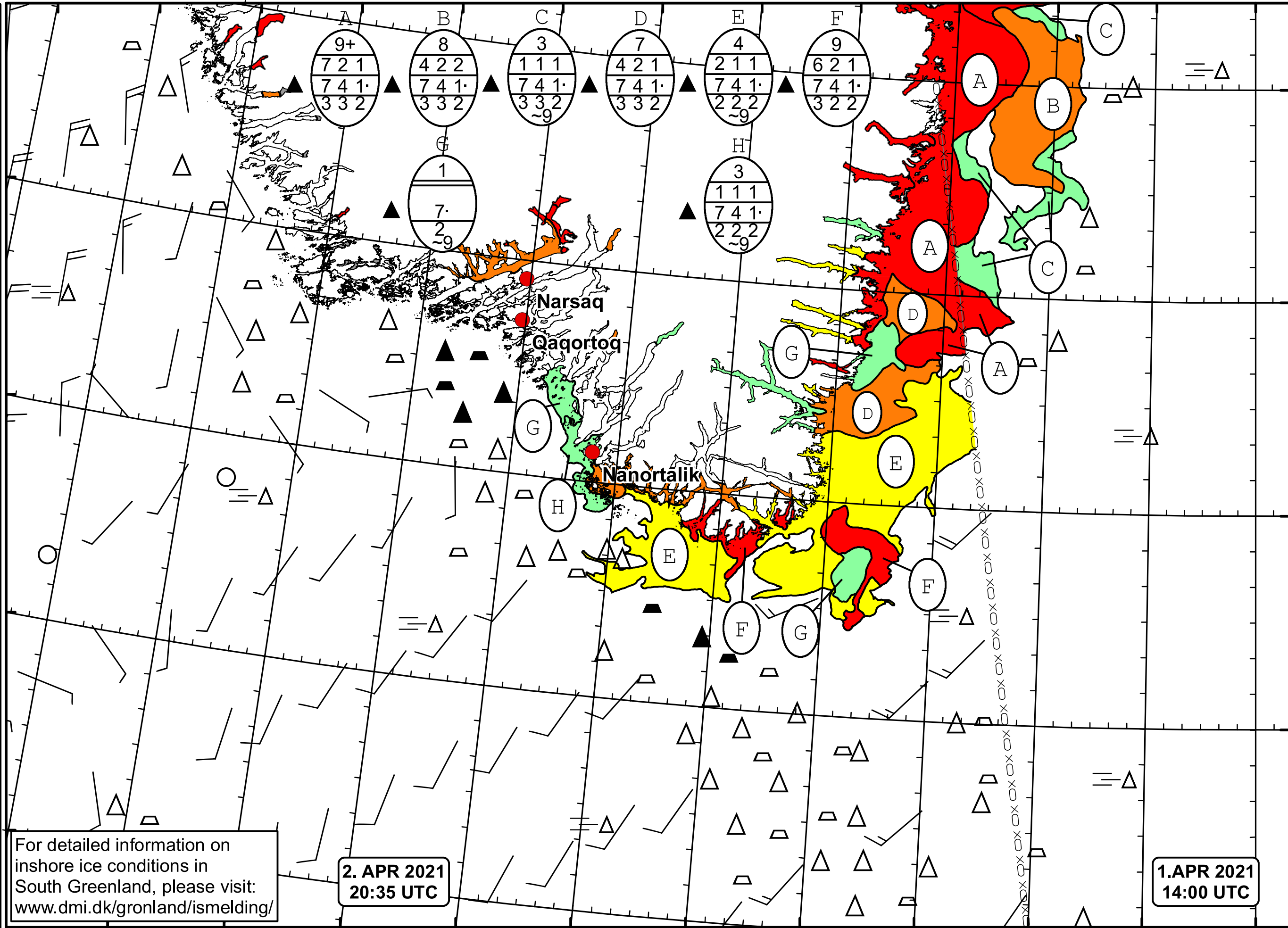


51°W 50°W 49°W 48°W 47°W 46°W 45°W 44°W 43°W 42°W 41°W 40°W 39°W


  
 DMI
   

  
 Ice Service
   
 Cape Farewell Ice Chart
   
 Danish Meteorological Institute
   
 Valid: 02 April 2021, 20:35 UTC
   
 Next Chart: 04 April 2021



For detailed information on inshore ice conditions in South Greenland, please visit: [www.dmi.dk/gronland/ismelding/](http://www.dmi.dk/gronland/ismelding/)

2. APR 2021  
20:35 UTC

1. APR 2021  
14:00 UTC

49°W 48°W 47°W 46°W 45°W 44°W 43°W 42°W 41°W 40°W 39°W