


51°W 50°W 49°W 48°W 47°W 46°W 45°W 44°W 43°W 42°W 41°W 40°W 39°W



 DMI

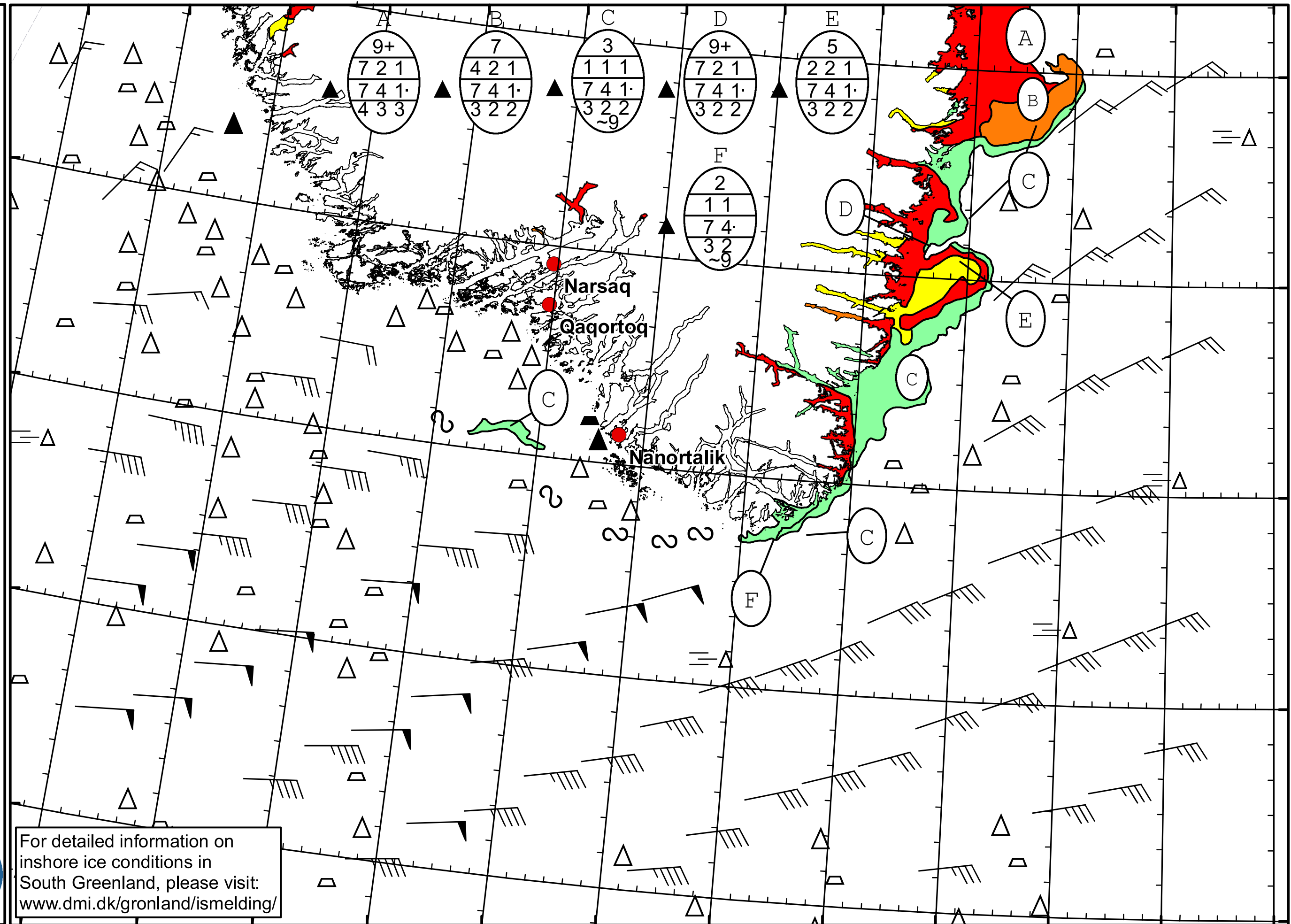
 Ice Service

 Danish Meteorological Institute

 Cape Farewell Ice Chart

 Valid: 02 May 2021, 20:35 UTC

 Next Chart: 05 May 2021



62°N
61°N
60°N
59°N

50°W 49°W 48°W 47°W 46°W 45°W 44°W 43°W 42°W 41°W 40°W 39°W

For detailed information on
 inshore ice conditions in
 South Greenland, please visit:
www.dmi.dk/gronland/ismelding/

