


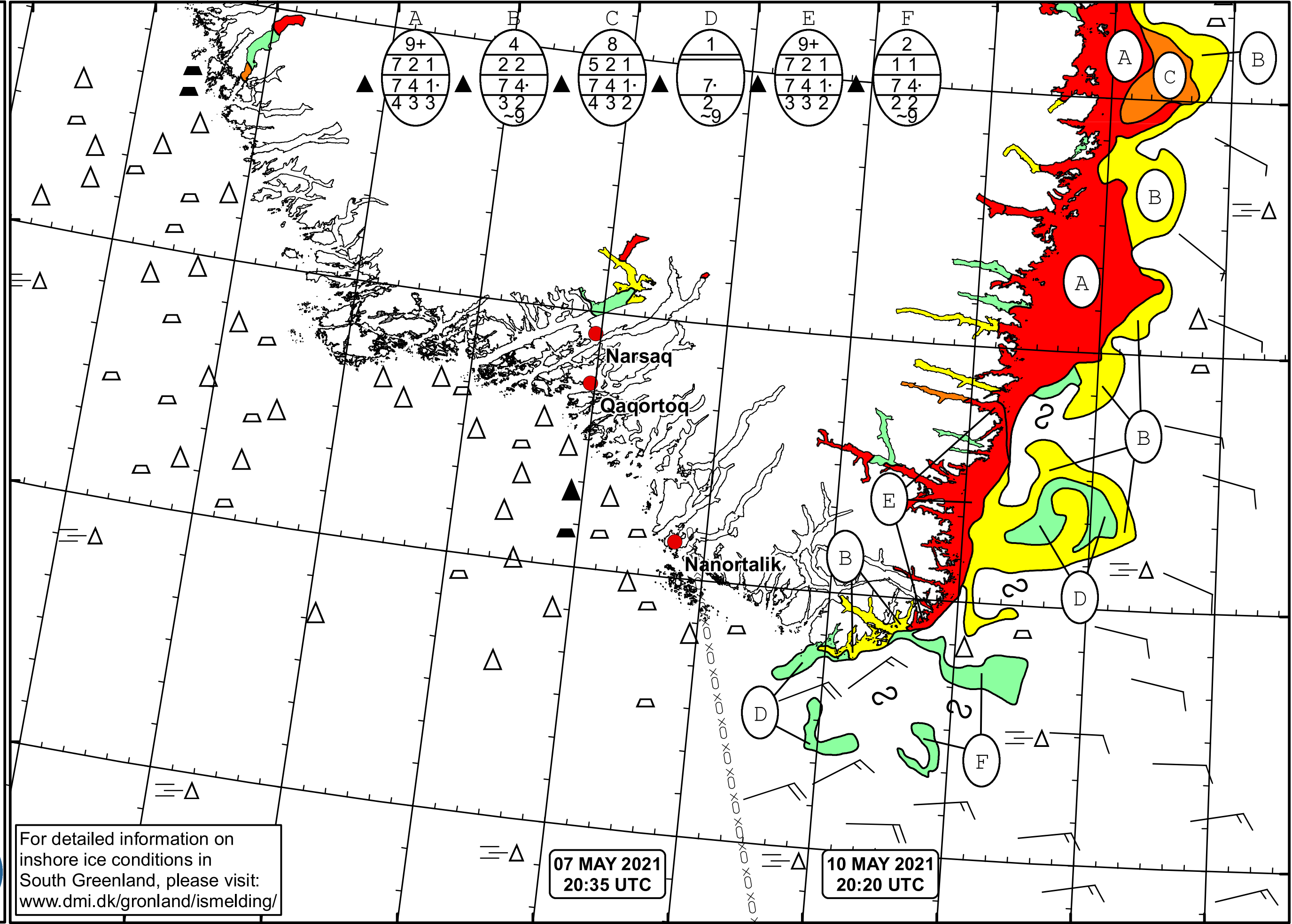


51°W 50°W 49°W 48°W 47°W 46°W 45°W 44°W 43°W 42°W 41°W


  
 DMI
   

  
 Ice Service
   
 Danish Meteorological Institute
   
 Cape Farewell Ice Chart
   
 Valid: 10 May 2021, 20:20 UTC
   
 Next Chart: 12 May 2021
   




For detailed information on inshore ice conditions in South Greenland, please visit: [www.dmi.dk/gronland/ismelding/](http://www.dmi.dk/gronland/ismelding/)

07 MAY 2021  
20:35 UTC

10 MAY 2021  
20:20 UTC

49°W 48°W 47°W 46°W 45°W 44°W 43°W 42°W 41°W

62°N

61°N

60°N

59°N