
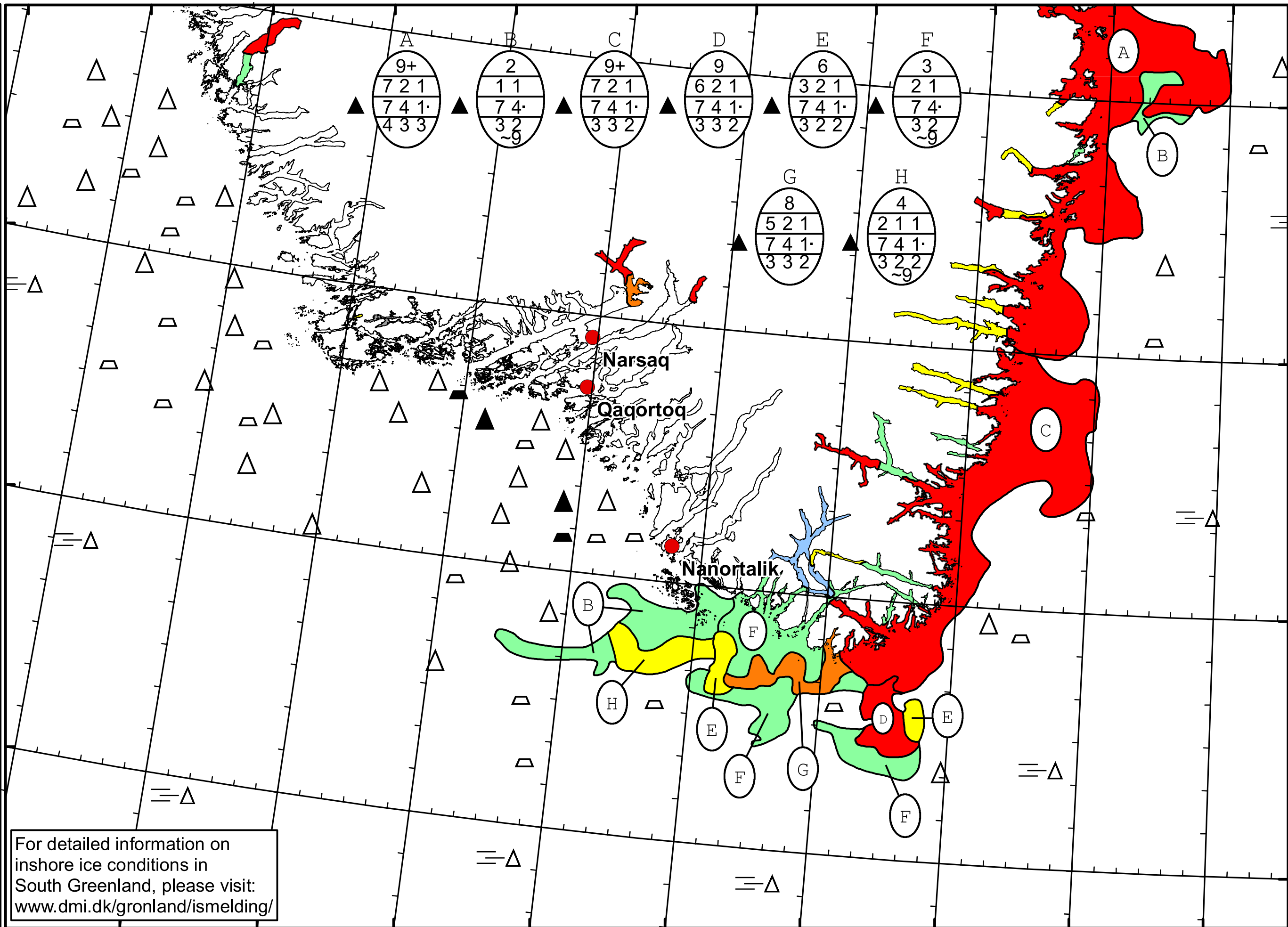


51°W 50°W 49°W 48°W 47°W 46°W 45°W 44°W 43°W 42°W 41°W


  
 DMI
   
 Ice Service
   
 Danish Meteorological Institute
   
 Cape Farewell Ice Chart
   
 Valid: 18 May 2021, 20:40 UTC
   
 Next Chart: 20 May 2021



For detailed information on inshore ice conditions in South Greenland, please visit: [www.dmi.dk/gronland/ismelding/](http://www.dmi.dk/gronland/ismelding/)



49°W 48°W 47°W 46°W 45°W 44°W 43°W 42°W 41°W

62°N 61°N 60°N 59°N