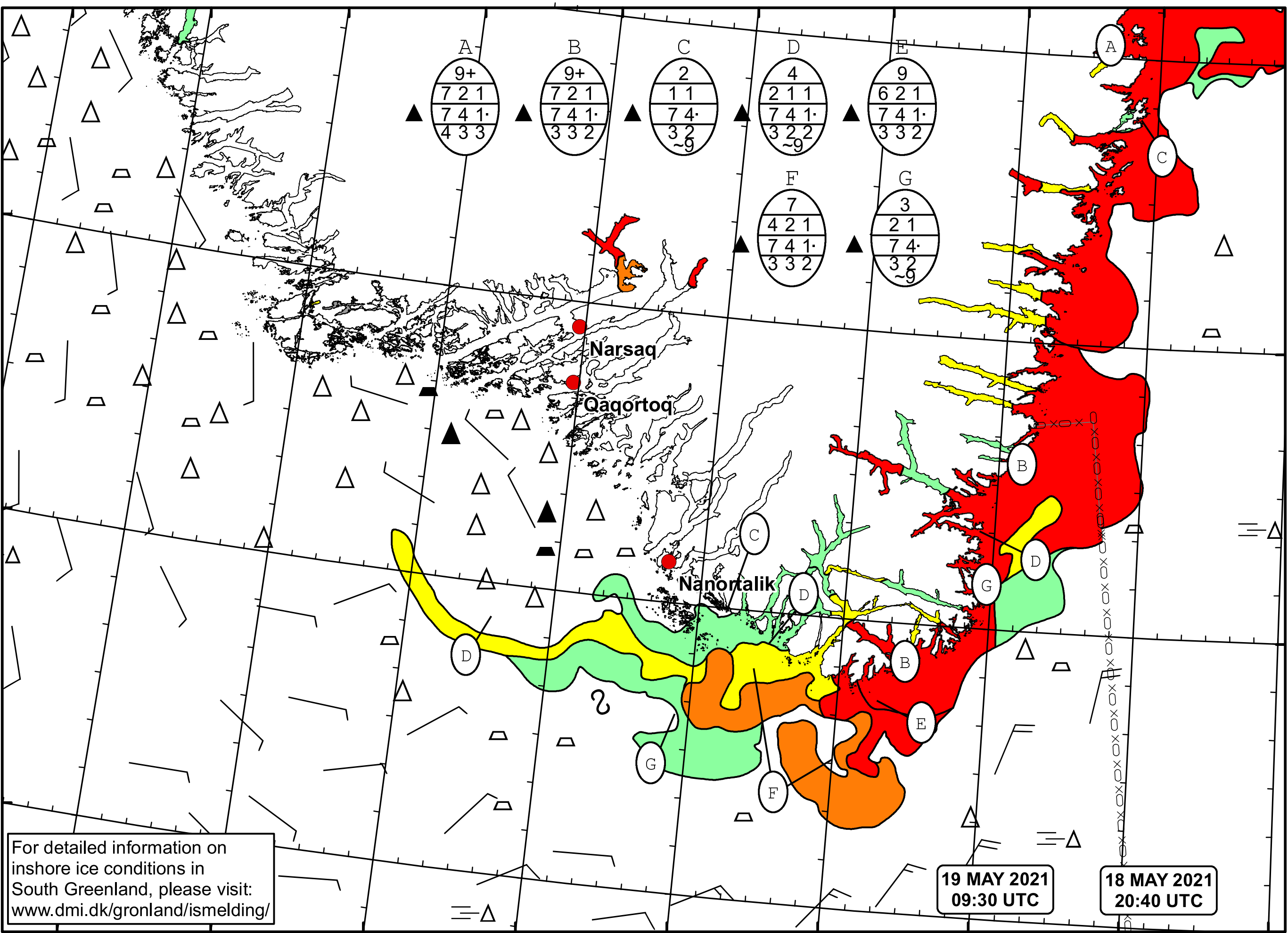


50°W 49°W 48°W 47°W 46°W 45°W 44°W 43°W 42°W

62°N

61°N

60°N



Cape Farewell Ice Chart
 Danish Meteorological Institute

Valid: 19 May 2021, 09:30 UTC
 Next Chart: : 21 May 2021



For detailed information on inshore ice conditions in South Greenland, please visit: www.dmi.dk/gronland/ismelding/

19 MAY 2021
 09:30 UTC

18 MAY 2021
 20:40 UTC

49°W 48°W 47°W 46°W 45°W 44°W 43°W 42°W 41°W