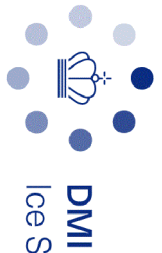
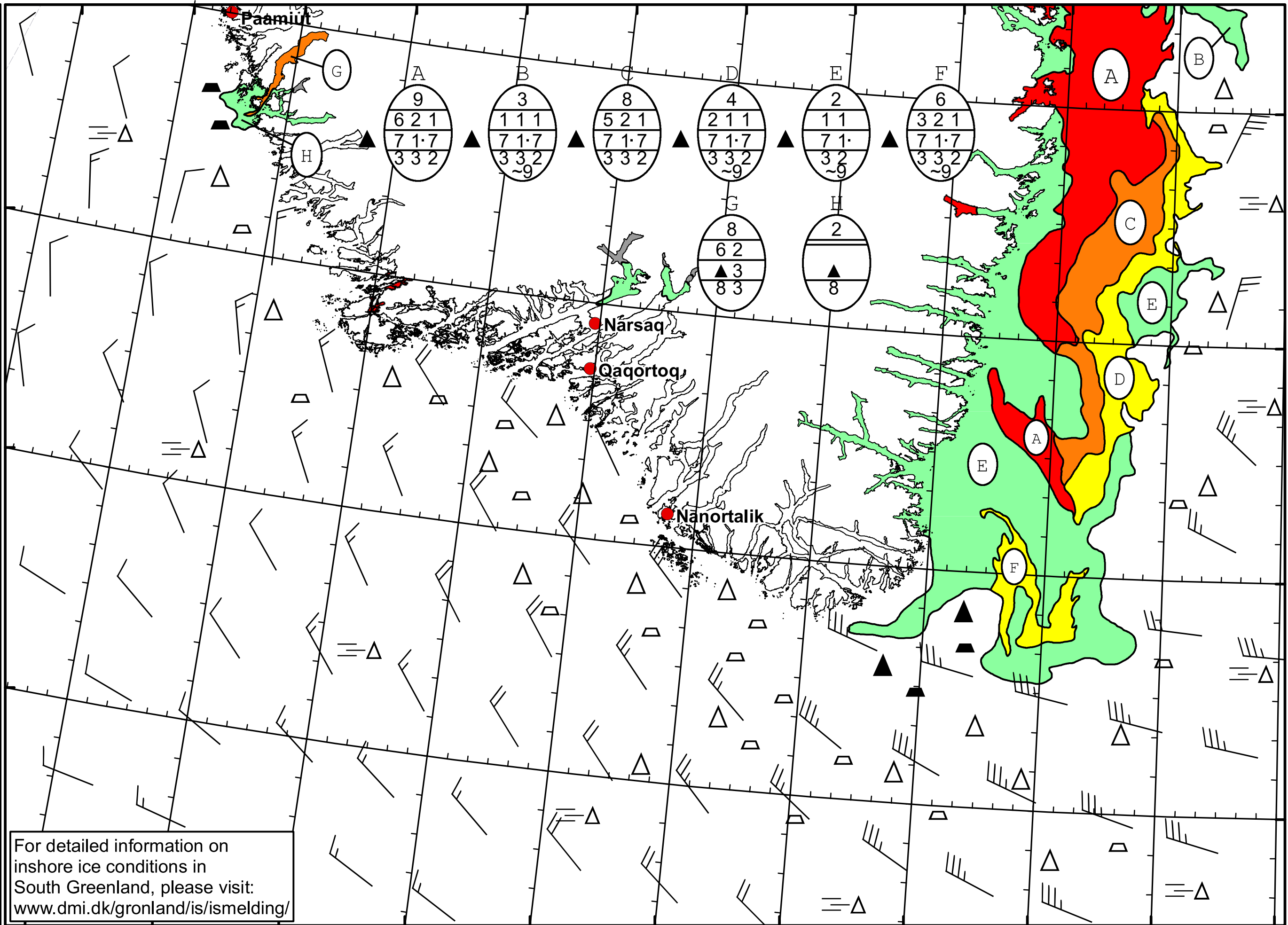


51°W 50°W 49°W 48°W 47°W 46°W 45°W 44°W 43°W 42°W 41°W

62°N
61°N
60°N
59°N



DMI
Ice Service
Cape Farewell Ice Chart
Danish Meteorological Institute
Valid: 05 February 2022, 20:30 UTC
Next Chart: 08 February 2022



For detailed information on inshore ice conditions in South Greenland, please visit: www.dmi.dk/gronland/is/ismelding/

50°W 49°W 48°W 47°W 46°W 45°W 44°W 43°W 42°W 41°W 40°W