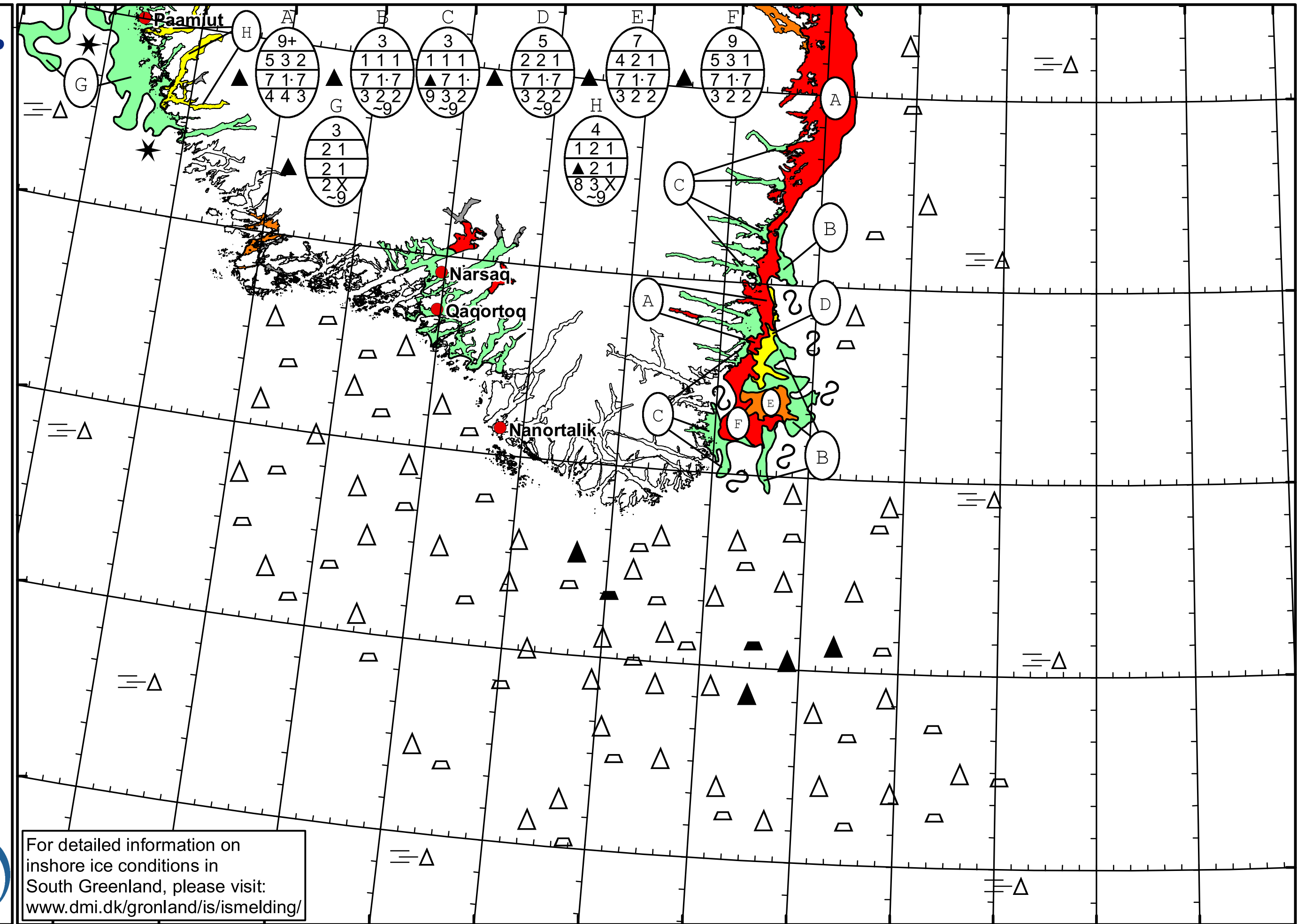


51°W 50°W 49°W 48°W 47°W 46°W 45°W 44°W 43°W 42°W 41°W 40°W 39°W 38°W 37°W



Cape Farewell Ice Chart
Valid: 28 February 2022, 09:55 UTC
Next Chart: 02 March 2022



For detailed information on inshore ice conditions in South Greenland, please visit: www.dmi.dk/gronland/is/ismelding/



49°W 48°W 47°W 46°W 45°W 44°W 43°W 42°W 41°W 40°W 39°W 38°W

62°N
61°N
60°N
59°N
58°N