



51°W 50°W 49°W 48°W 47°W 46°W 45°W 44°W 43°W 42°W 41°W 40°W 39°W 38°W 37°W



 DMI



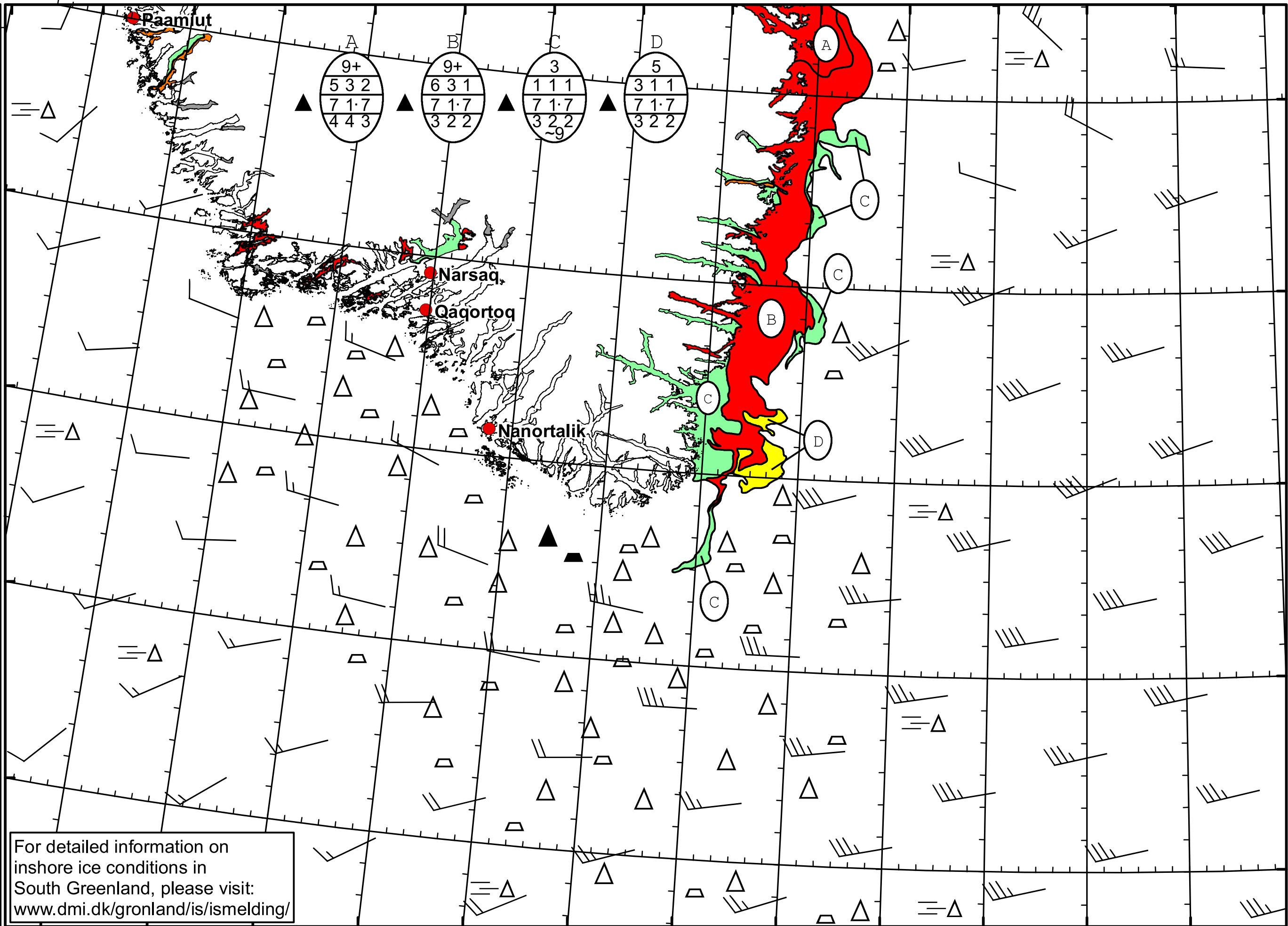
 Ice Service

 Cape Farewell Ice Chart

 Danish Meteorological Institute

 Valid: 03 March 2022, 09:15 UTC

 Next Chart: 06 March 2022



For detailed information on
 inshore ice conditions in
 South Greenland, please visit:
www.dmi.dk/gronland/is/ismelding/

49°W 48°W 47°W 46°W 45°W 44°W 43°W 42°W 41°W 40°W 39°W 38°W