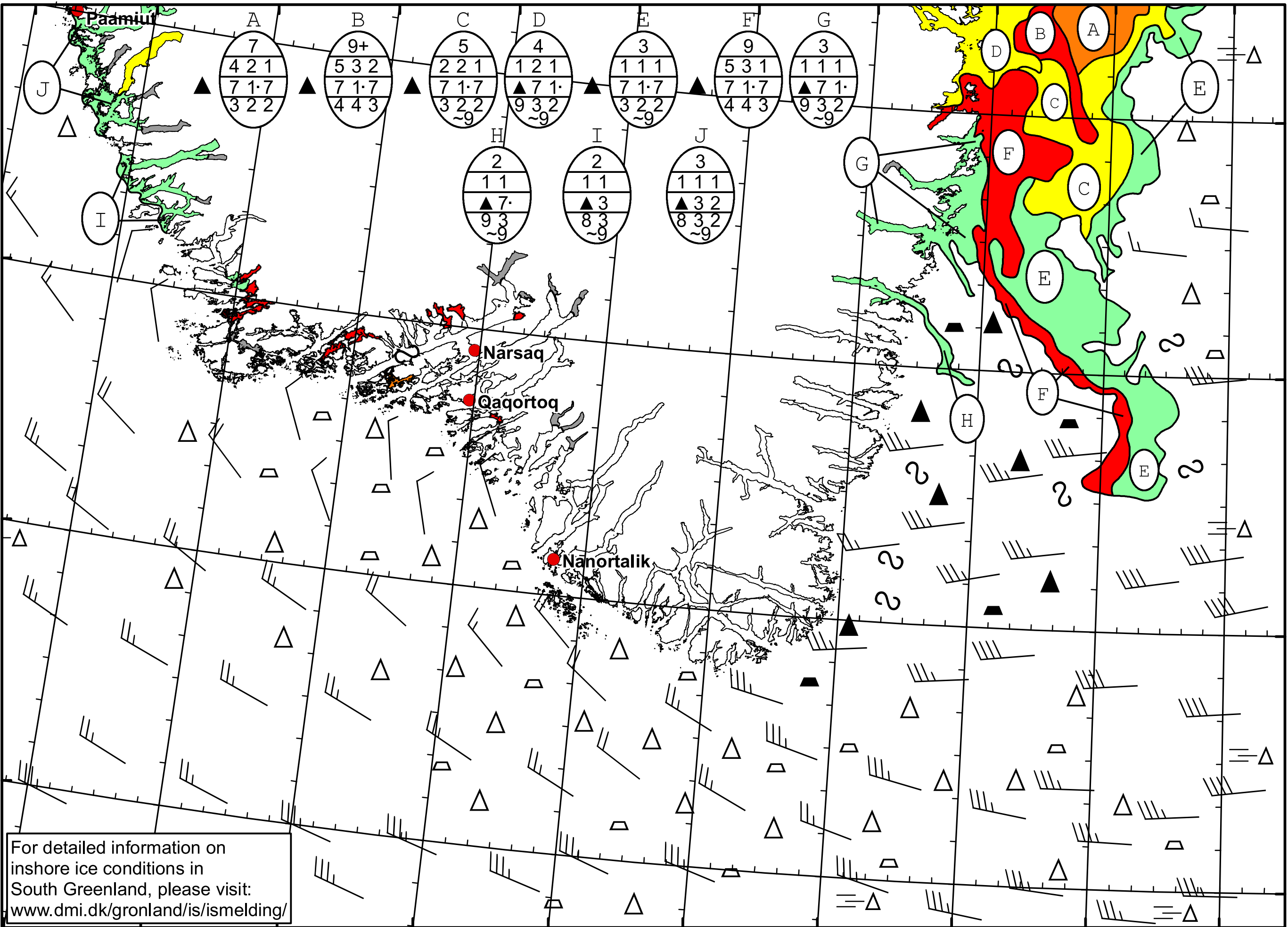


50°W 49°W 48°W 47°W 46°W 45°W 44°W 43°W 42°W 41°W 40°W



 DMI
 Ice Service

Cape Farewell Ice Chart
 Danish Meteorological Institute

Valid: 17 March 2022, 09:15 UTC
 Next Chart: 19 March 2022



For detailed information on
 inshore ice conditions in
 South Greenland, please visit:
www.dmi.dk/gronland/is/ismelding/

49°W 48°W 47°W 46°W 45°W 44°W 43°W 42°W 41°W 40°W

62°N
61°N
60°N
59°N