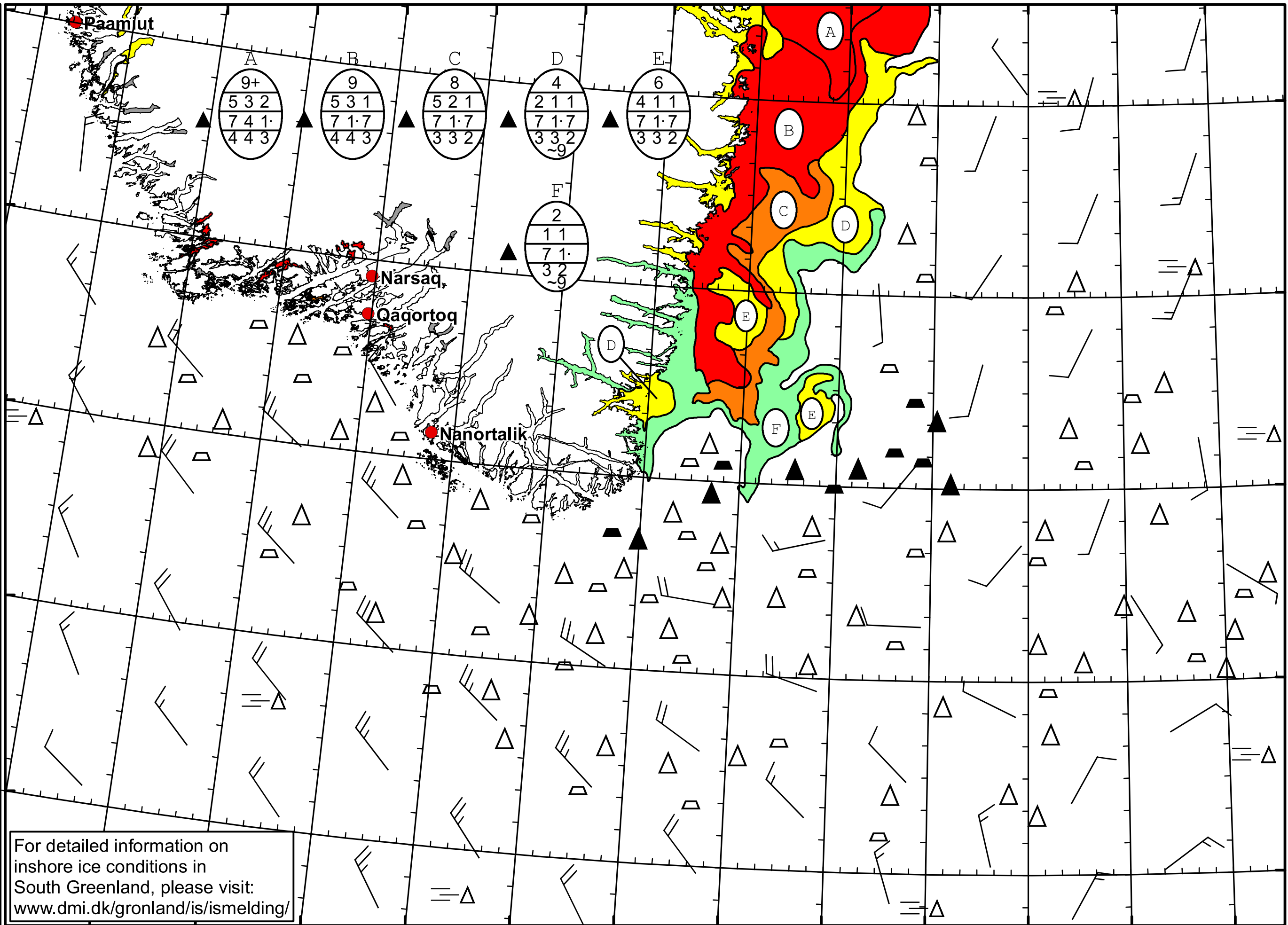


50°W 49°W 48°W 47°W 46°W 45°W 44°W 43°W 42°W 41°W 40°W 39°W 38°W 37°W



DMI  
Ice Service

Cape Farewell Ice Chart  
Danish Meteorological Institute

Valid: 20 March 2022, 20:20 UTC  
Next Chart: 23 March 2022



For detailed information on inshore ice conditions in South Greenland, please visit: [www.dmi.dk/gronland/is/ismelding/](http://www.dmi.dk/gronland/is/ismelding/)

48°W 47°W 46°W 45°W 44°W 43°W 42°W 41°W 40°W 39°W 38°W 37°W

62°N  
61°N  
60°N  
59°N  
58°N