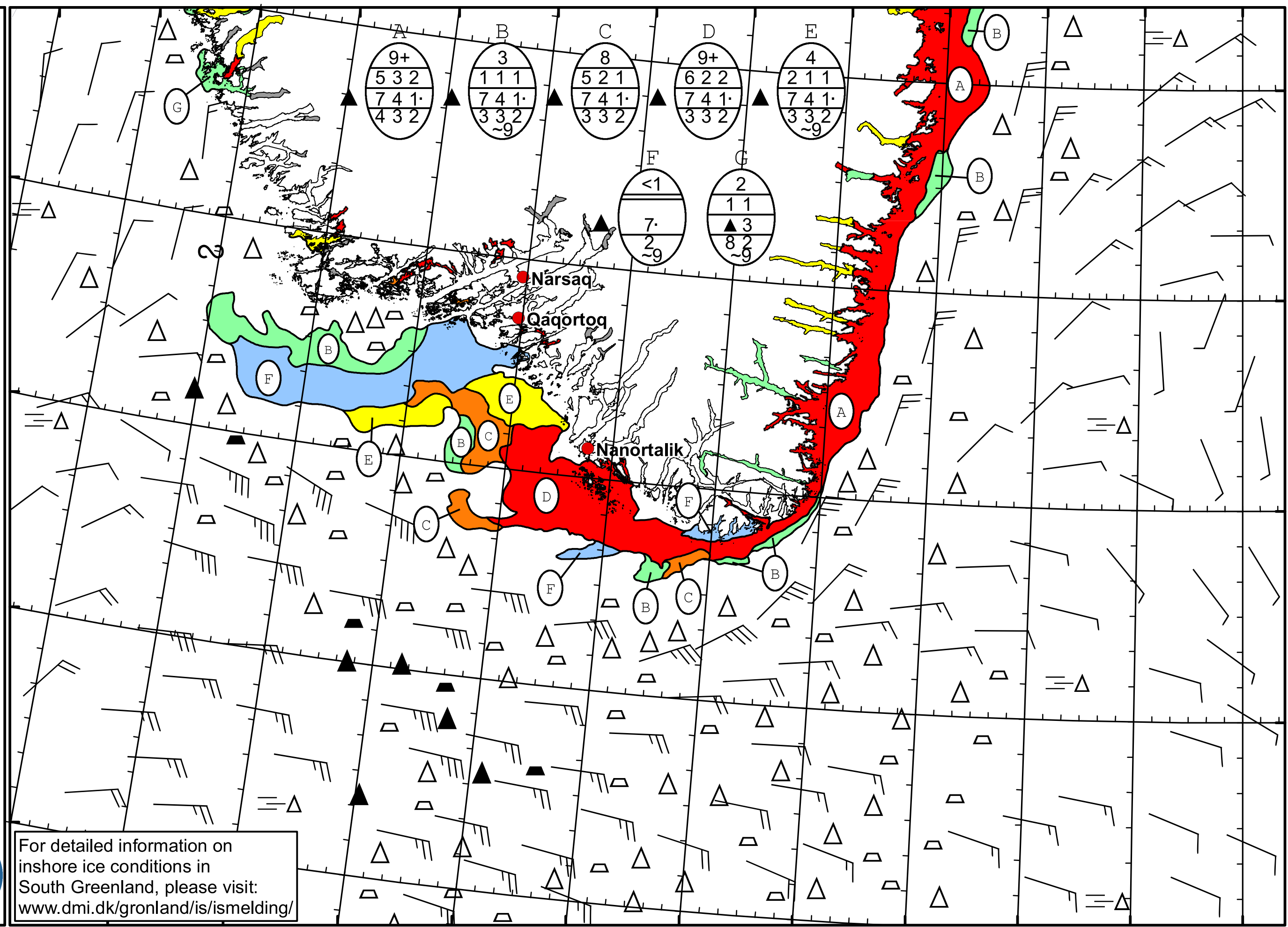


51°W 50°W 49°W 48°W 47°W 46°W 45°W 44°W 43°W 42°W 41°W 40°W 39°W



Cape Farewell Ice Chart
Valid: 01 April 2022, 20:40 UTC
Next Chart: 04 April 2022



62°N
61°N
60°N
59°N

For detailed information on inshore ice conditions in South Greenland, please visit: www.dmi.dk/gronland/is/ismelding/



49°W 48°W 47°W 46°W 45°W 44°W 43°W 42°W 41°W 40°W 39°W