


51°W 50°W 49°W 48°W 47°W 46°W 45°W 44°W 43°W 42°W 41°W



 DMI

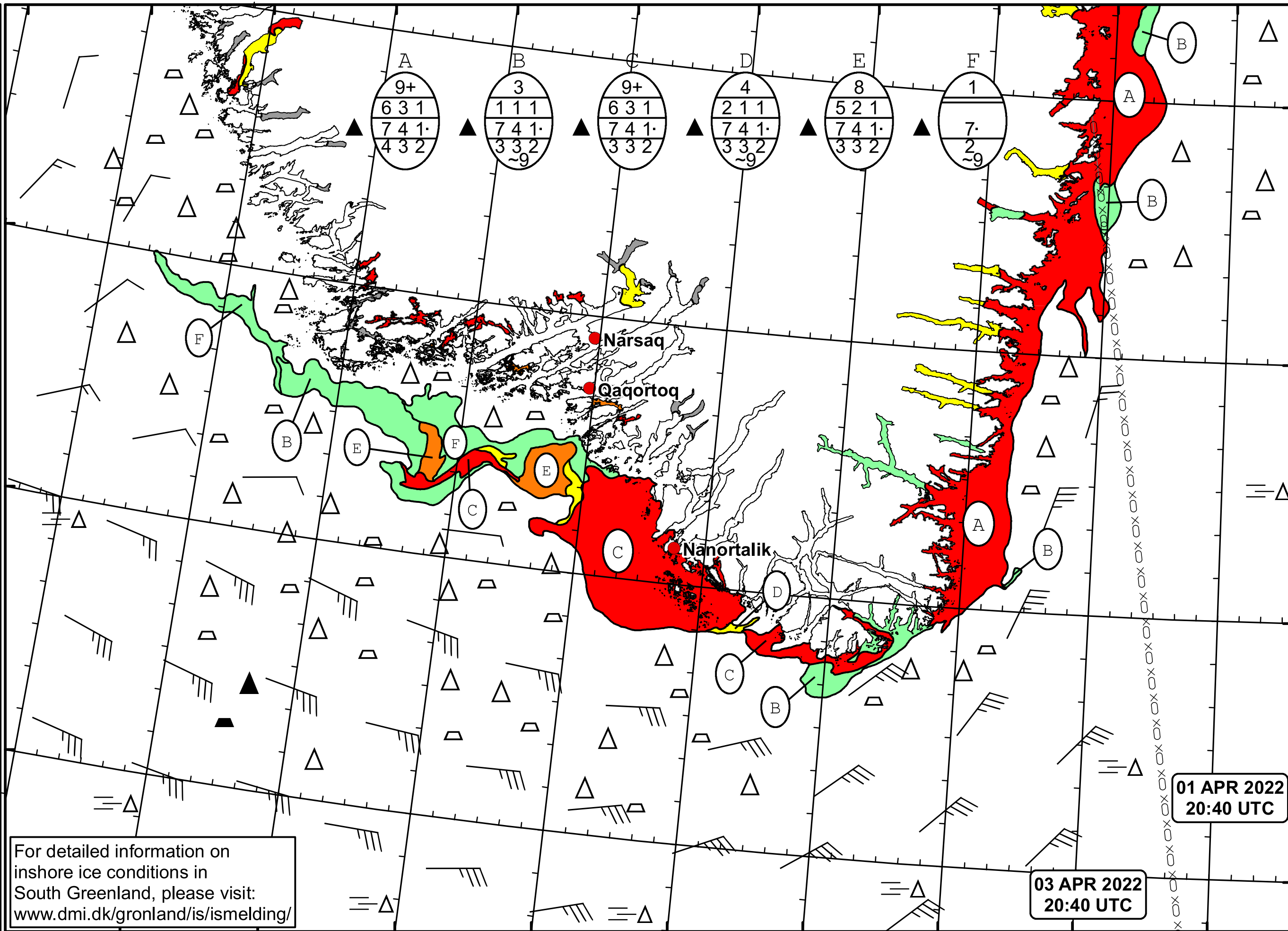
 Ice Service

 Cape Farewell Ice Chart

 Danish Meteorological Institute

 Valid: 03 April 2022, 20:40 UTC

 Next Chart: 06 April 2022



| A | B | C | D | E | F |
|-------|-------|-------|-------|-------|---|
| 9+ | 3 | 9+ | 4 | 8 | 1 |
| 6 3 1 | 1 1 1 | 6 3 1 | 2 1 1 | 5 2 1 | 7 |
| 7 4 1 | 7 4 1 | 7 4 1 | 7 4 1 | 7 4 1 | 2 |
| 4 3 2 | 3 3 2 | 3 3 2 | 3 3 2 | 3 3 2 | 9 |

01 APR 2022
20:40 UTC

03 APR 2022
20:40 UTC

For detailed information on inshore ice conditions in South Greenland, please visit: www.dmi.dk/gronland/is/ismelding/



49°W 48°W 47°W 46°W 45°W 44°W 43°W 42°W 41°W

62°N
61°N
60°N
59°N