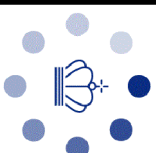


51°W 50°W 49°W 48°W 47°W 46°W 45°W 44°W 43°W 42°W 41°W



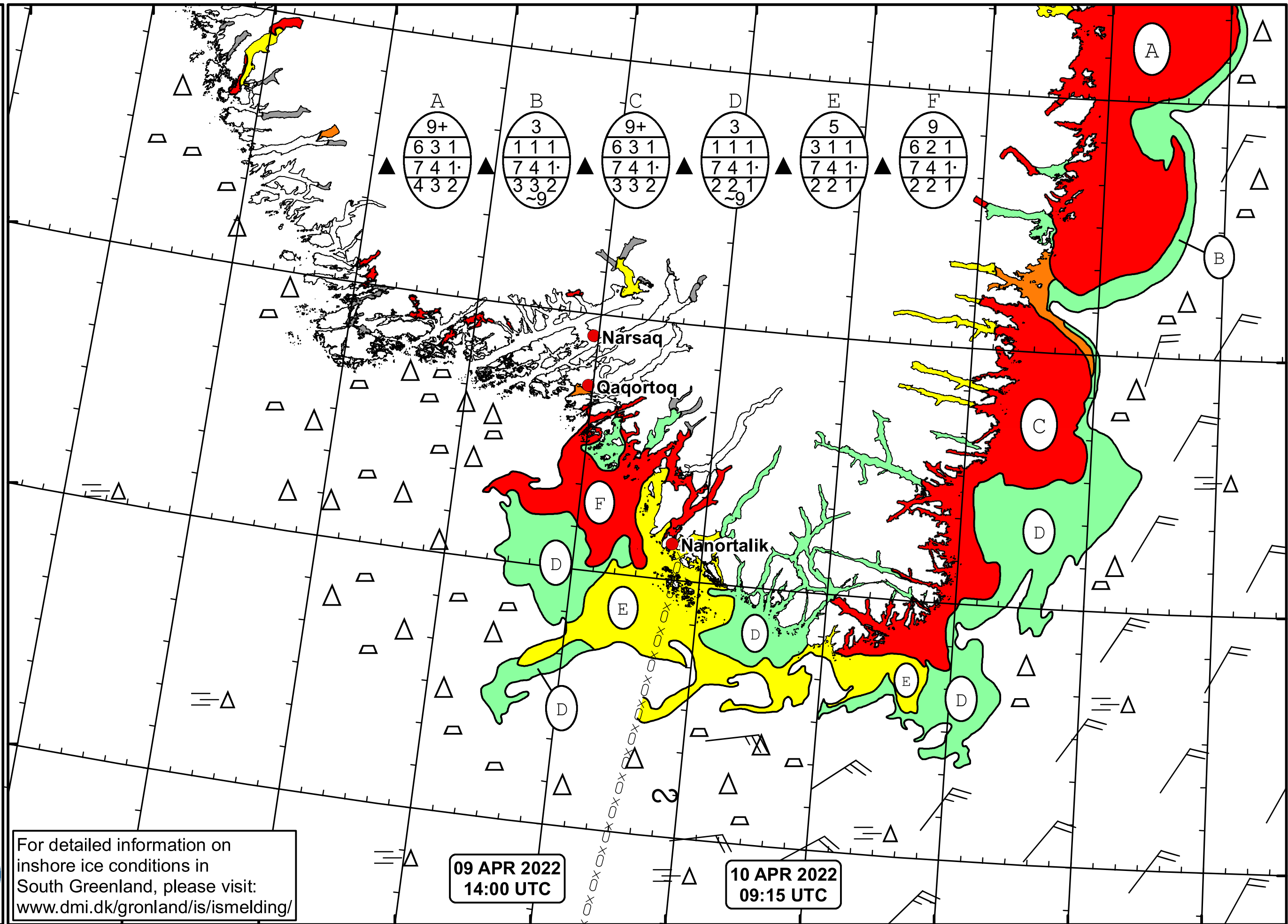
DMI
Ice Service

Cape Farewell Ice Chart
Danish Meteorological Institute

Valid: 10 April 2022, 09:15 UTC
Next Chart: 12 April 2022



For detailed information on inshore ice conditions in South Greenland, please visit:
www.dmi.dk/gronland/is/ismelding/



62°N

61°N

60°N

59°N

49°W

48°W

47°W

46°W

45°W

44°W

43°W

42°W

41°W