


51°W 50°W 49°W 48°W 47°W 46°W 45°W 44°W 43°W 42°W 41°W



 DMI

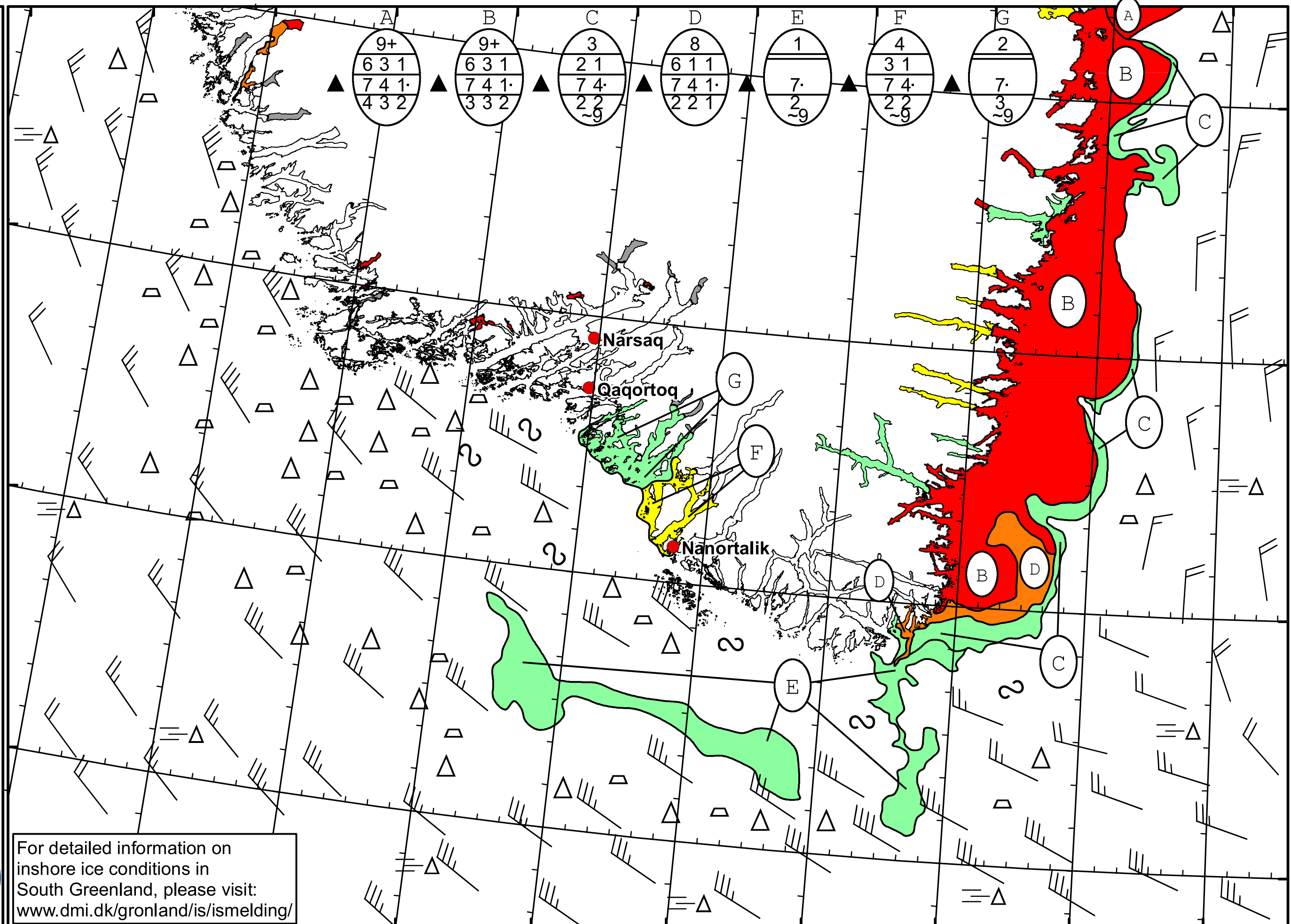
 Ice Service

 Danish Meteorological Institute

 Cape Farewell Ice Chart

 Valid: 20 April 2022, 09:15 UTC

 Next Chart: 22 April 2022



For detailed information on
 inshore ice conditions in
 South Greenland, please visit:
www.dmi.dk/gronland/is/ismelding/



49°W 48°W 47°W 46°W 45°W 44°W 43°W 42°W 41°W

62°N

61°N

60°N

59°N