


51°W 50°W 49°W 48°W 47°W 46°W 45°W 44°W 43°W 42°W 41°W



 DMI


 Ice Service

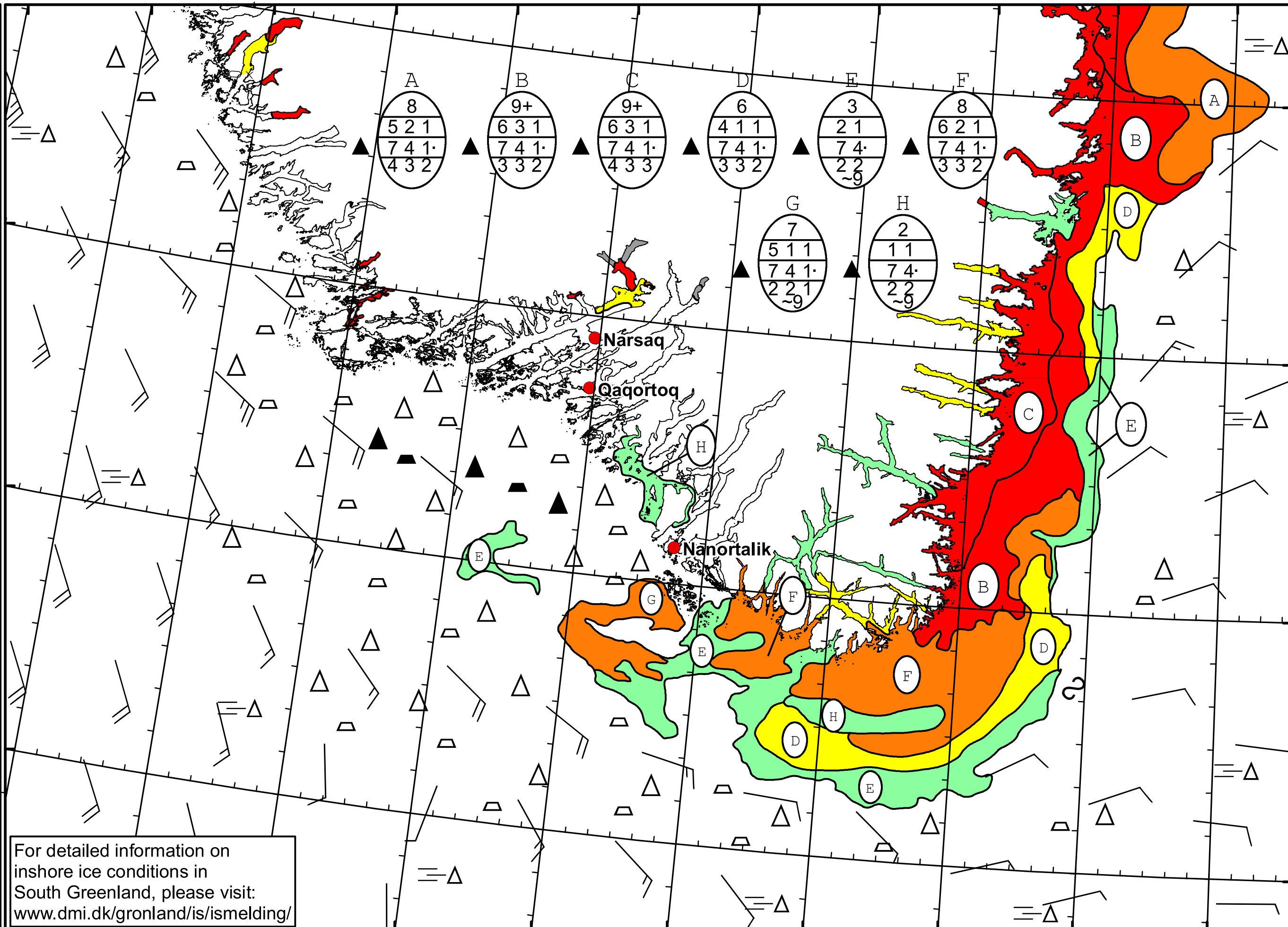
 Danish Meteorological Institute

 Cape Farewell Ice Chart

 Valid: 26 April 2022, 20:30 UTC

 Next Chart: 28 April 2022





For detailed information on inshore ice conditions in South Greenland, please visit: www.dmi.dk/gronland/is/ismelding/

49°W 48°W 47°W 46°W 45°W 44°W 43°W 42°W 41°W

62°N
61°N
60°N
59°N