



51°W 50°W 49°W 48°W 47°W 46°W 45°W 44°W 43°W 42°W 41°W

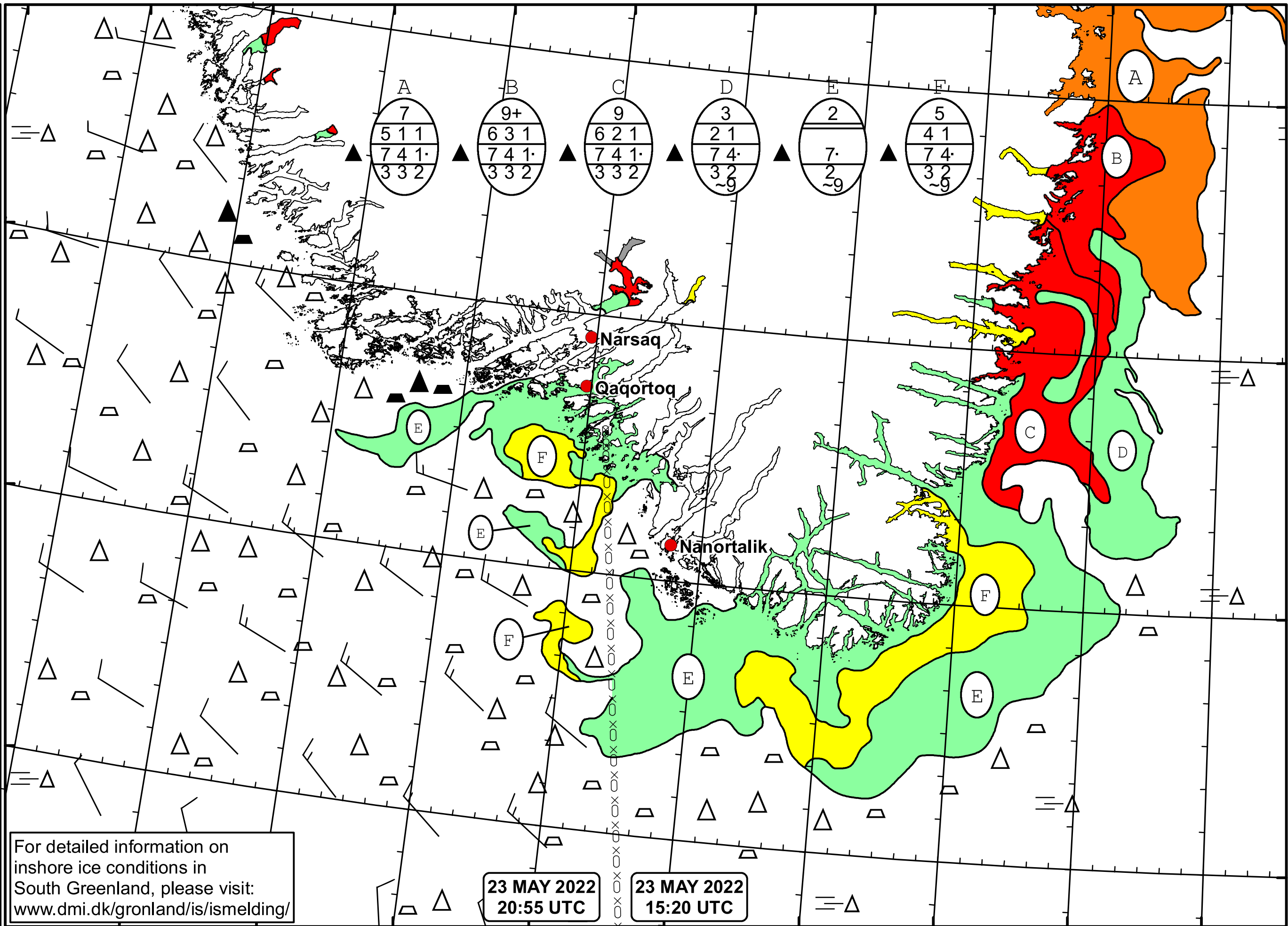
62°N

61°N

60°N

59°N



**DMI**  
 Ice Service  
**Cape Farewell Ice Chart**  
 Danish Meteorological Institute  
 Valid: 23 May 2022, 20:55 UTC  
 Next Chart: 29 May 2022



For detailed information on inshore ice conditions in South Greenland, please visit: [www.dmi.dk/gronland/is/ismelding/](http://www.dmi.dk/gronland/is/ismelding/)

23 MAY 2022  
20:55 UTC

23 MAY 2022  
15:20 UTC

49°W 48°W 47°W 46°W 45°W 44°W 43°W 42°W 41°W