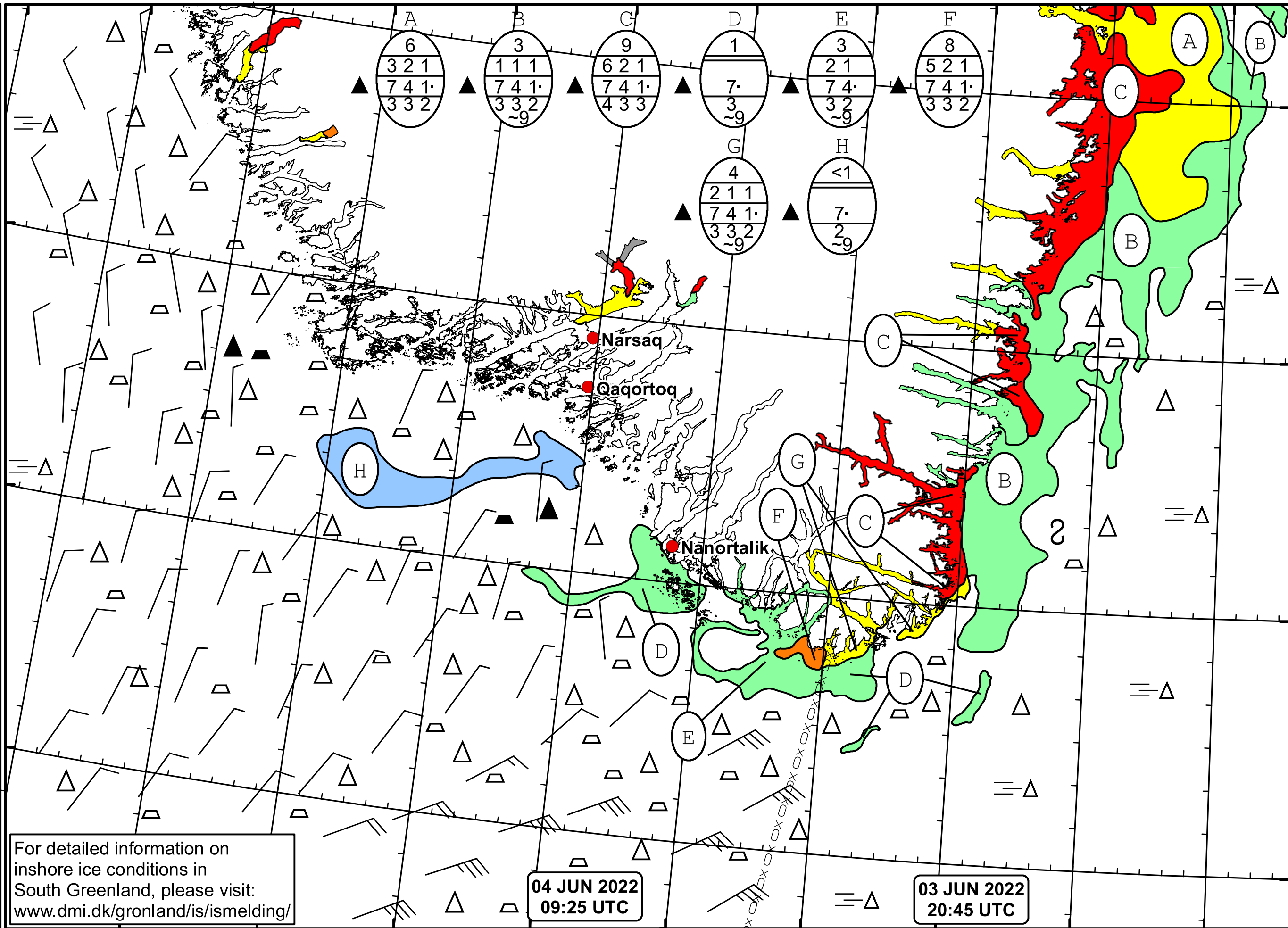


51°W 50°W 49°W 48°W 47°W 46°W 45°W 44°W 43°W 42°W 41°W



DMI
Ice Service
Danish Meteorological Institute
Cape Farewell Ice Chart
Valid: 04 June 2022, 09:25 UTC
Next Chart: 06 June 2022



For detailed information on inshore ice conditions in South Greenland, please visit: www.dmi.dk/gronland/is/ismelding/

04 JUN 2022
09:25 UTC

03 JUN 2022
20:45 UTC

49°W 48°W 47°W 46°W 45°W 44°W 43°W 42°W 41°W

62°N
61°N
60°N
59°N