


51°W 50°W 49°W 48°W 47°W 46°W 45°W 44°W 43°W 42°W 41°W



 DMI

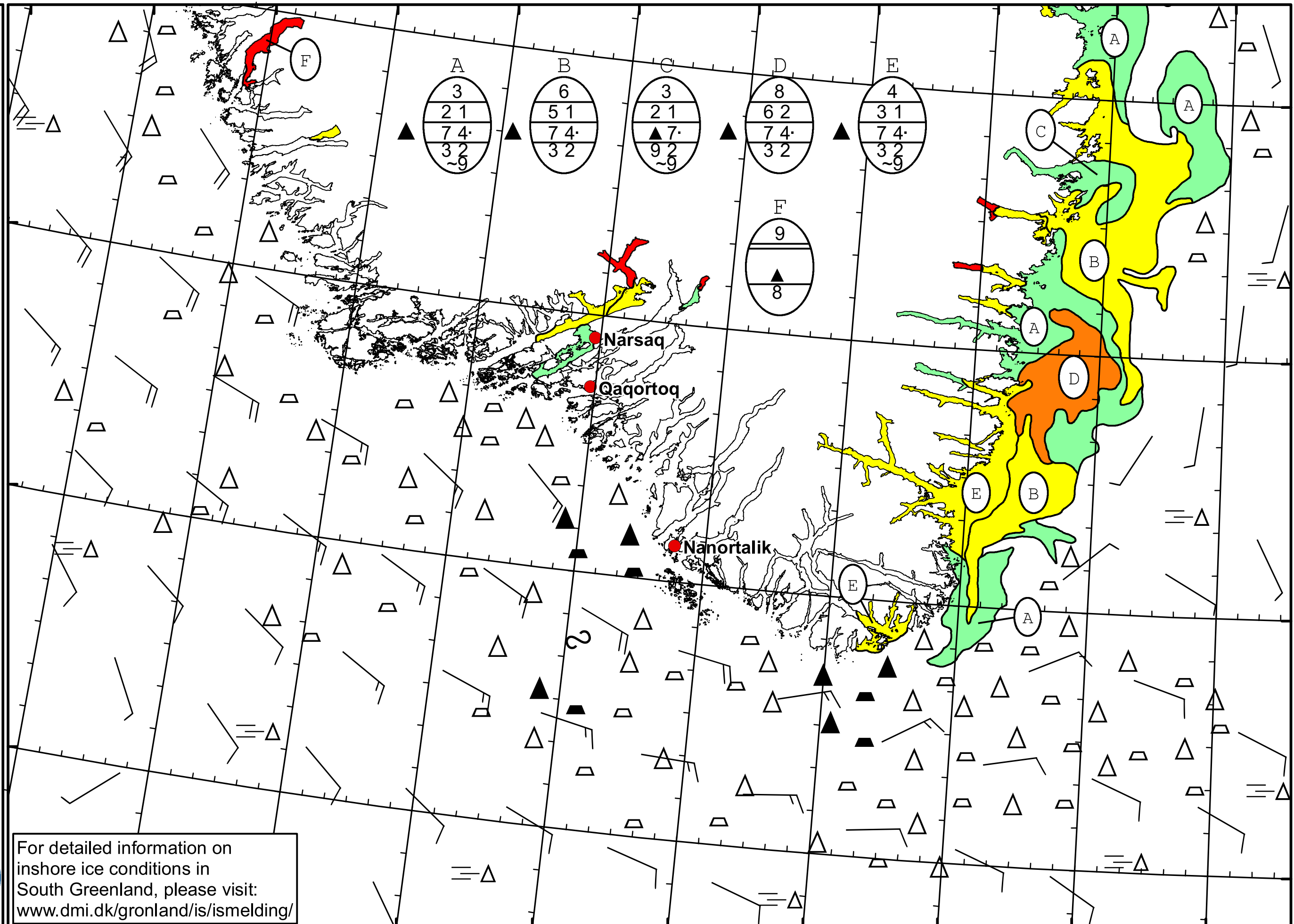
 Ice Service

 Danish Meteorological Institute

 Cape Farewell Ice Chart

 Valid: 24 June 2022, 20:25 UTC

 Next Chart: 27 June 2022



62°N
61°N
60°N
59°N

For detailed information on
 inshore ice conditions in
 South Greenland, please visit:
www.dmi.dk/gronland/is/ismelding/

