

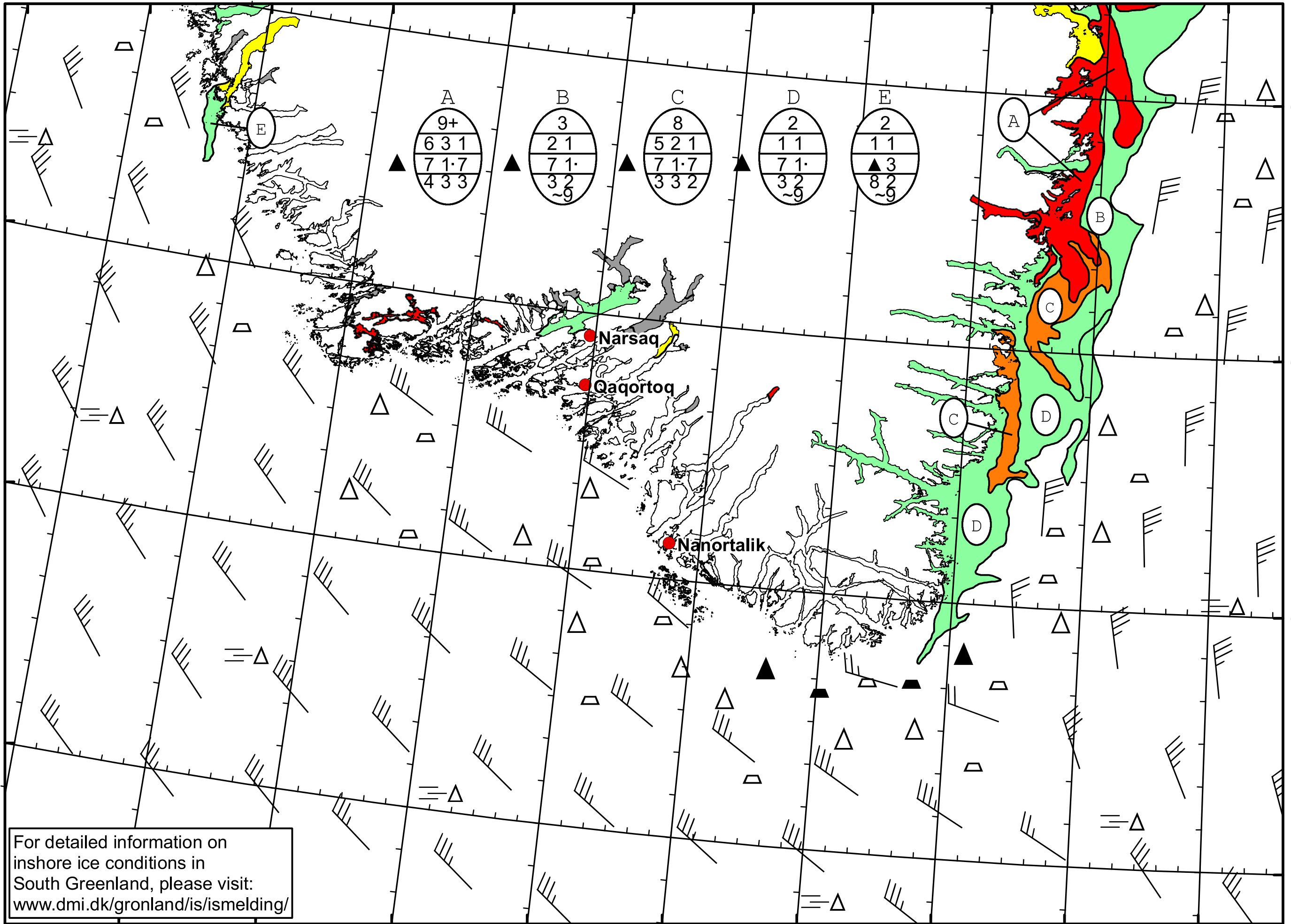
51°W 50°W 49°W 48°W 47°W 46°W 45°W 44°W 43°W 42°W 41°W

62°N

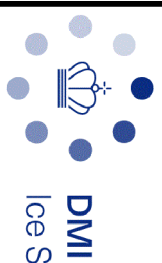
61°N

60°N

59°N



A	B	C	D	E
9+	3	8	2	2
6 3 1	2 1	5 2 1	1 1	1 1
7 1.7	7 1.	7 1.7	7 1.	▲ 3
4 3 3	3 2	3 3 2	3 2	8 2
	~9		~9	~9



DMI
Ice Service

Cape Farewell Ice Chart
Danish Meteorological Institute

Valid: 13 February 2023, 09:05 UTC
Next Chart: 15 February 2023



For detailed information on inshore ice conditions in South Greenland, please visit: www.dmi.dk/gronland/is/ismelding/

49°W 48°W 47°W 46°W 45°W 44°W 43°W 42°W 41°W