

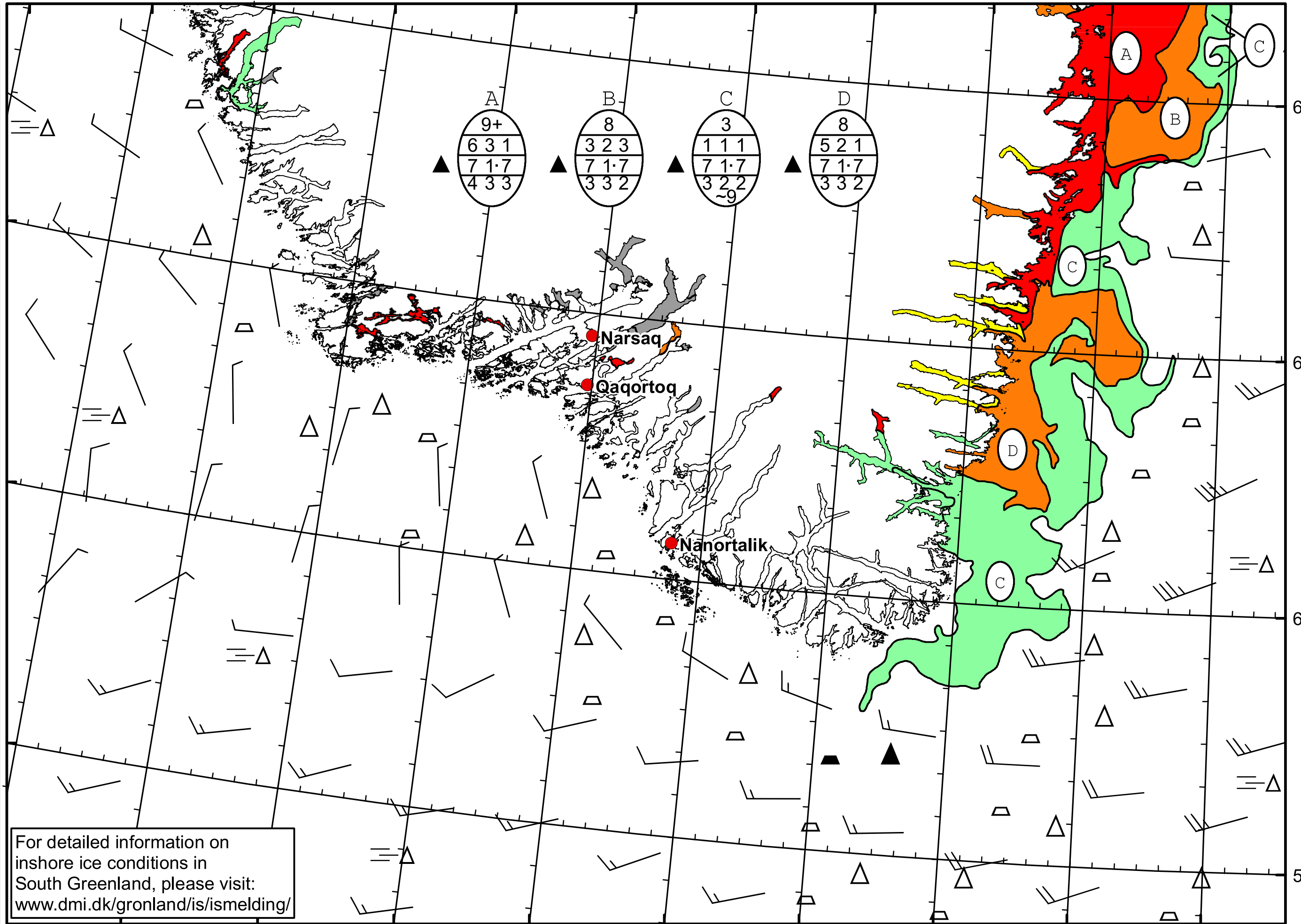
51°W 50°W 49°W 48°W 47°W 46°W 45°W 44°W 43°W 42°W 41°W

62°N

61°N

60°N

59°N



DMU

Ice Service

Cape Farewell Ice Chart
Danish Meteorological Institute

Valid: 19 February 2023, 20:20 UTC
Next Chart: 22 February 2023



For detailed information on
inshore ice conditions in
South Greenland, please visit:
www.dmi.dk/gronland/is/ismelding/