


51°W 50°W 49°W 48°W 47°W 46°W 45°W 44°W 43°W 42°W 41°W



 DMI

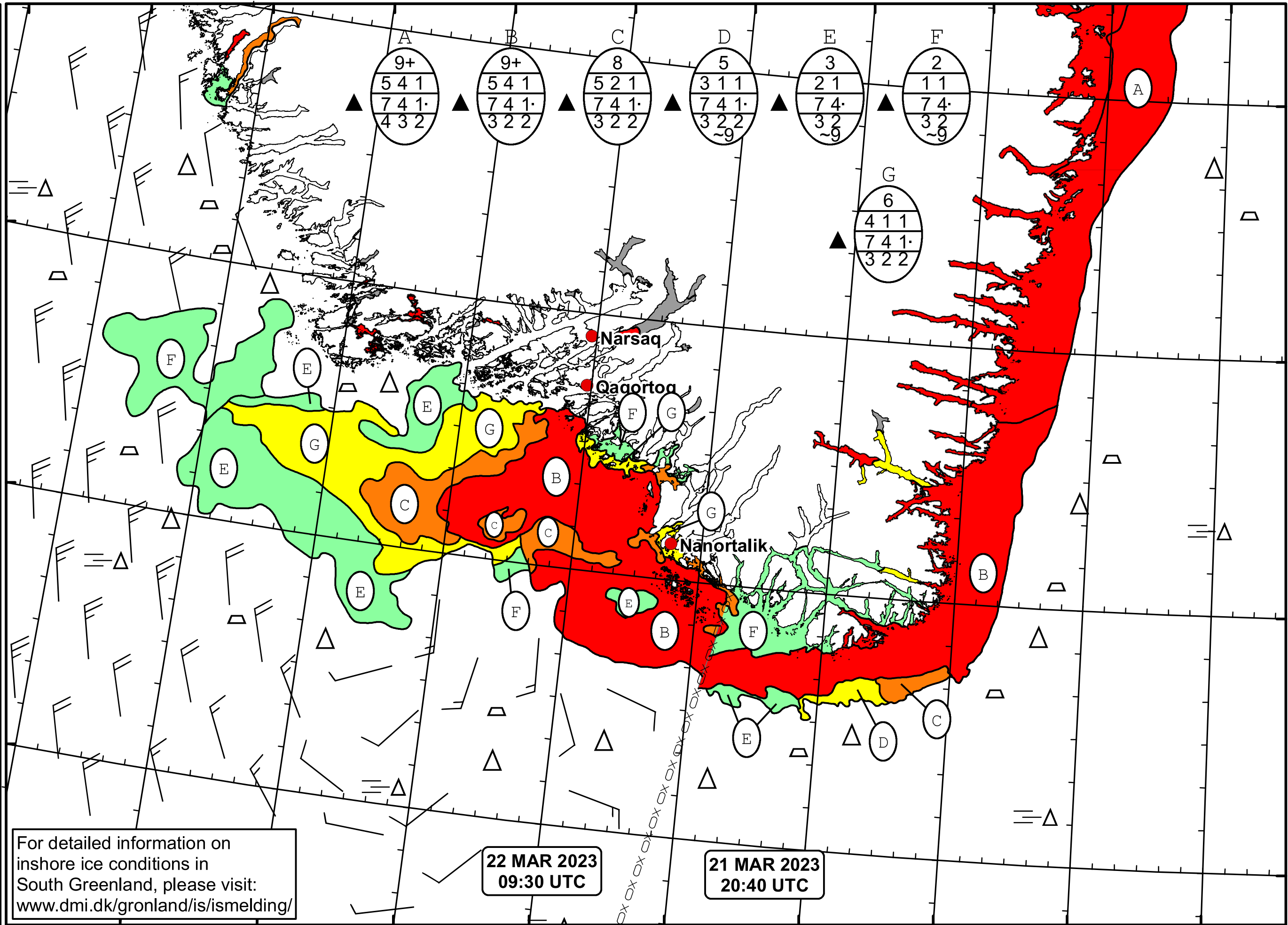
 Ice Service

 Danish Meteorological Institute

 Cape Farewell Ice Chart

 Valid: 22 March 2023, 09:30 UTC

 Next Chart: 25 March 2023



For detailed information on inshore ice conditions in South Greenland, please visit: www.dmi.dk/gronland/is/ismelding/

22 MAR 2023
09:30 UTC

21 MAR 2023
20:40 UTC

49°W 48°W 47°W 46°W 45°W 44°W 43°W 42°W 41°W

62°N 61°N 60°N 59°N