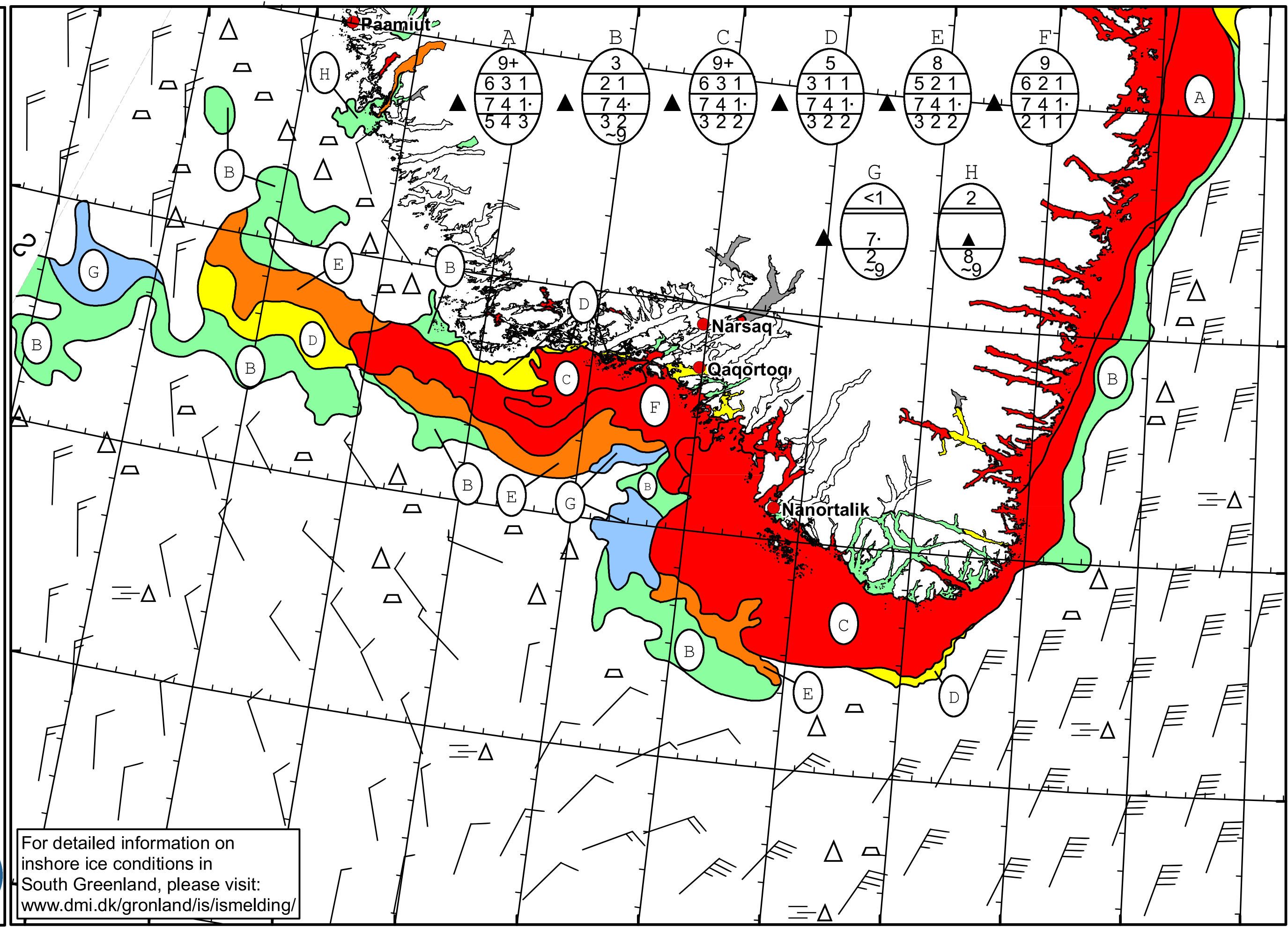


52°W 51°W 50°W 49°W 48°W 47°W 46°W 45°W 44°W 43°W 42°W 41°W



 **DMI**
 Ice Service

Cape Farewell Ice Chart
 Danish Meteorological Institute

Valid: 28 March 2023, 20:30 UTC
 Next Chart: 31 March 2023



For detailed information on
 inshore ice conditions in
 South Greenland, please visit:
www.dmi.dk/gronland/is/ismelding/

51°W 50°W 49°W 48°W 47°W 46°W 45°W 44°W 43°W 42°W 41°W